

Product datasheet

Anti-zcrb1 antibody ab106434

1 图像

概述

产品名称	Anti-zcrb1抗体
描述	兔多克隆抗体to zcrb1
宿主	Rabbit
经测试应用	适用于: WB
种属反应性	与反应: Mouse, Rat, Human
免疫原	17 amino acid synthetic peptide designed near the C terminus of Human zcrb1 (NP_149105).
阳性对照	Raji cell lysate

性能

形式	Liquid
存放说明	Shipped at 4°C. Store at 4°C (stable for up to 12 months).
存储溶液	Preservative: 0.02% Sodium azide Constituent: PBS
纯度	Immunogen affinity purified
克隆	多克隆
同种型	IgG

应用

Our [Abpromise guarantee](#) covers the use of **ab106434** in the following tested applications.

The application notes include recommended starting dilutions; optimal dilutions/concentrations should be determined by the end user.

应用	Ab评论	说明
WB		Use a concentration of 1 - 2 µg/ml. Predicted molecular weight: 25 kDa.

靶标

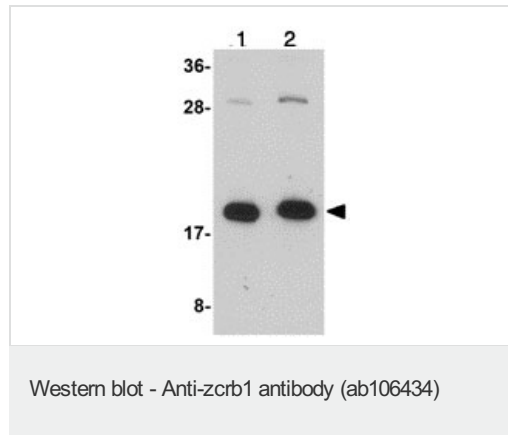
序列相似性	Contains 1 CCHC-type zinc finger.
-------	-----------------------------------

Contains 1 RRM (RNA recognition motif) domain.

## 细胞定位

Nucleus > nucleoplasm.

## 图片



**Lane 1** : Anti-zcrb1 antibody (ab106434) at 1 µg/ml

**Lane 2** : Anti-zcrb1 antibody (ab106434) at 2 µg/ml

**All lanes** : Raji cell lysate

Lysates/proteins at 15 µg per lane.

**Predicted band size:** 25 kDa

**Please note:** All products are "FOR RESEARCH USE ONLY AND ARE NOT INTENDED FOR DIAGNOSTIC OR THERAPEUTIC USE"

## Our Abpromise to you: Quality guaranteed and expert technical support

- Replacement or refund for products not performing as stated on the datasheet
- Valid for 12 months from date of delivery
- Response to your inquiry within 24 hours
- We provide support in Chinese, English, French, German, Japanese and Spanish
- Extensive multi-media technical resources to help you
- We investigate all quality concerns to ensure our products perform to the highest standards

If the product does not perform as described on this datasheet, we will offer a refund or replacement. For full details of the Abpromise, please visit <https://www.abcam.cn/abpromise> or contact our technical team.

## Terms and conditions

- Guarantee only valid for products bought direct from Abcam or one of our authorized distributors