


Product datasheet

Anti-xCT antibody ab111822

★★★★☆ 1 Abreviews 1 References 3 图像

概述

产品名称	Anti-xCT抗体
描述	山羊多克隆抗体to xCT
宿主	Goat
经测试应用	适用于: ELISA, WB, IHC-P
种属反应性	与反应: Human 预测可用于: Mouse, Rat, Dog, Pig, Orangutan 
免疫原	Synthetic peptide: KGQTQNFKDAFSGRD by a Cysteine residue linker, corresponding to internal sequence amino acids 215-229 of Human xCT. Run BLAST with Run BLAST with
阳性对照	Human Kidney and Placenta tissues; Human Spleen lysate.

性能

形式	Liquid
存放说明	Shipped at 4°C. Store at +4°C short term (1-2 weeks). Upon delivery aliquot. Store at -20°C long term.
存储溶液	pH: 7.30 Preservative: 0.02% Sodium azide Constituents: 99% Tris buffered saline, 0.5% BSA
纯度	Protein G purified
克隆	多克隆
同种型	IgG

应用

Our [Abpromise guarantee](#) covers the use of **ab111822** in the following tested applications.

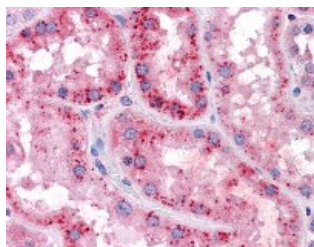
The application notes include recommended starting dilutions; optimal dilutions/concentrations should be determined by the end user.

应用	Ab评论	说明
ELISA		1/128000.
WB		Use a concentration of 0.02 - 0.06 µg/ml. Predicted molecular weight: 55 kDa.
IHC-P		Use a concentration of 3.75 µg/ml.

靶标

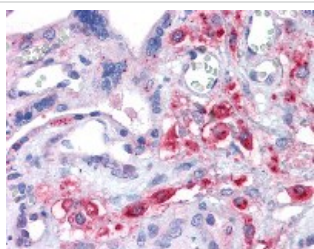
功能	Sodium-independent, high-affinity exchange of anionic amino acids with high specificity for anionic form of cystine and glutamate.
序列相似性	Belongs to the amino acid-polyamine-organocation (APC) superfamily. L-type amino acid transporter (LAT) (TC 2.A.3.8) family.
细胞定位	Membrane.
形式	xCT has a predicted molecular weight of 55 kDa; however it has a high number of hydrophobic residues which may affect the migration of the protein in SDS-PAGE. Endogenous monomeric xCT is expected to migrate at ~35 kDa and modified-xCT is expected to migrate at ~55 kDa (PMID: 17035536)

图片



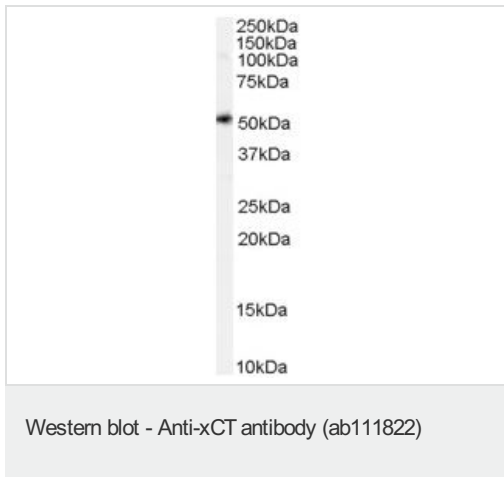
ab111822 at 3.75 µg/ml staining xCT in Formalin-Fixed, Paraffin-Embedded Human Kidney tissue by Immunohistochemistry.

Immunohistochemistry (Formalin/PFA-fixed paraffin-embedded sections) - Anti-xCT antibody (ab111822)



ab111822 at 3.75 µg/ml staining xCT in Formalin-Fixed, Paraffin-Embedded Human Placenta tissue by Immunohistochemistry.

Immunohistochemistry (Formalin/PFA-fixed paraffin-embedded sections) - Anti-xCT antibody (ab111822)



Anti-xCT antibody (ab111822) at 0.02 µg/ml (for one hour) + Human Spleen lysate in RIPA buffer at 35 µg

Developed using the ECL technique.

Predicted band size: 55 kDa

Please note: All products are "FOR RESEARCH USE ONLY AND ARE NOT INTENDED FOR DIAGNOSTIC OR THERAPEUTIC USE"

Our Abpromise to you: Quality guaranteed and expert technical support

- Replacement or refund for products not performing as stated on the datasheet
- Valid for 12 months from date of delivery
- Response to your inquiry within 24 hours
- We provide support in Chinese, English, French, German, Japanese and Spanish
- Extensive multi-media technical resources to help you
- We investigate all quality concerns to ensure our products perform to the highest standards

If the product does not perform as described on this datasheet, we will offer a refund or replacement. For full details of the Abpromise, please visit <https://www.abcam.cn/abpromise> or contact our technical team.

Terms and conditions

- Guarantee only valid for products bought direct from Abcam or one of our authorized distributors