

## Product datasheet

# Anti-Robo1 antibody ab7279

★★★★★ 12 Abreviews 46 References 6 图像

### 概述

<b>产品名称</b>	Anti-Robo1抗体
<b>描述</b>	兔多克隆抗体to Robo1
<b>宿主</b>	Rabbit
<b>特异性</b>	Some batches may cross-react with Robo2 and Robo3. Please see abreview for more details.
<b>经测试应用</b>	<b>适用于:</b> ELISA, IHC-P, WB, IHC-Fr
<b>种属反应性</b>	<b>与反应:</b> Mouse, Human
<b>免疫原</b>	Synthetic peptide: C-VLGGYERGEDNNE conjugated to KLH, corresponding to amino acids 1632-1644 of Human Robo1. <a href="#">Run BLAST with</a> <a href="#">Run BLAST with</a>
<b>阳性对照</b>	WB: HEK-293, HeLa, MCF-7, A-549, and A-172 lysates. IHC-P: Human brain tissue. IHC-Fr: Mouse lung tissue.
<b>常规说明</b>	<p>The Life Science industry has been in the grips of a reproducibility crisis for a number of years. Abcam is leading the way in addressing this with our range of recombinant monoclonal antibodies and knockout edited cell lines for gold-standard validation. Please check that this product meets your needs before purchasing.</p> <p>If you have any questions, special requirements or concerns, please send us an inquiry and/or contact our Support team ahead of purchase. Recommended alternatives for this product can be found below, along with publications, customer reviews and Q&amp;As</p>

### 性能

<b>形式</b>	Liquid
<b>存放说明</b>	Shipped at 4°C. Store at +4°C short term (1-2 weeks). Upon delivery aliquot. Store at -20°C or -80°C. Avoid freeze / thaw cycle.
<b>存储溶液</b>	Preservative: 0.01% Sodium azide Constituents: 0.42% Potassium phosphate, 0.87% Sodium chloride
<b>纯度</b>	Immunogen affinity purified
<b>克隆</b>	多克隆
<b>同种型</b>	IgG

## 应用

### The Abpromise guarantee

Abpromise™ 承诺保证使用ab7279于以下的经测试应用

“应用说明”部分 下显示的仅为推荐的起始稀释度;实际最佳的稀释度/浓度应由使用者检定。

应用	Ab评论	说明
ELISA		1/30000 - 1/60000.
IHC-P	★★★★★ (2)	Use a concentration of 2 - 10 µg/ml.
WB	★★★★☆ (4)	1/500 - 1/3000. Detects a band of approximately 181 kDa.
IHC-Fr	★★★★☆ (4)	Use a concentration of 2 - 10 µg/ml.

## 靶标

### 功能

Receptor for SLIT1 and SLIT2 which are thought to act as molecular guidance cue in cellular migration, including axonal navigation at the ventral midline of the neural tube and projection of axons to different regions during neuronal development. In axon growth cones, the silencing of the attractive effect of NTN1 by SLIT2 may require the formation of a ROBO1-DCC complex. May be required for lung development.

### 组织特异性

Widely expressed, with exception of kidney.

### 序列相似性

Belongs to the immunoglobulin superfamily. ROBO family.  
Contains 3 fibronectin type-III domains.  
Contains 5 Ig-like C2-type (immunoglobulin-like) domains.

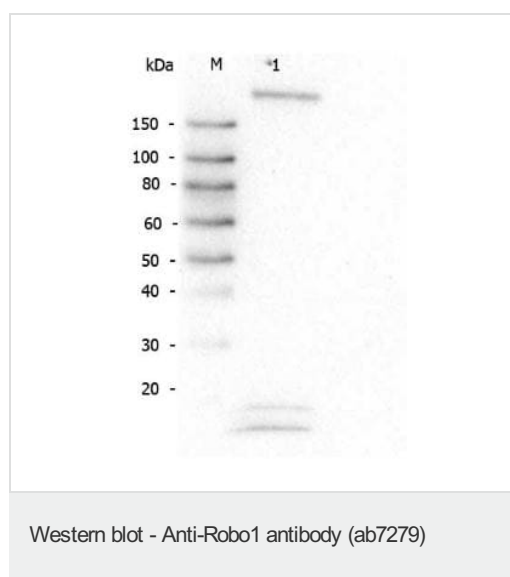
### 翻译后修饰

Ubiquitinated. May be deubiquitinated by USP33.

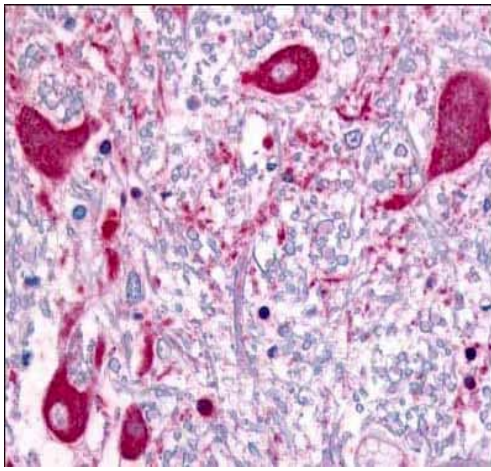
### 细胞定位

Membrane.

## 图片

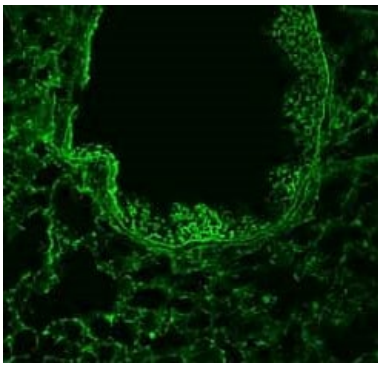


Anti-Robo1 antibody (ab7279) at 1/1000 dilution + HeLa whole cell lysate at 30 µg



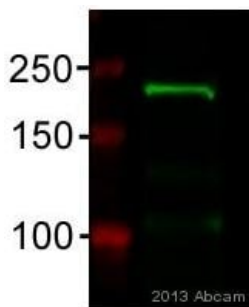
Immunohistochemistry (Formalin/PFA-fixed paraffin-embedded sections) - Anti-Robo1 antibody (ab7279)

This image shows staining of human brain tissue.



Immunohistochemistry (Frozen sections) - Anti-Robo1 antibody (ab7279)

Immunohistochemistry analysis of mouse lung tissue sections (adult, frozen 100  $\mu$ m wholemount sections) labelling Robo1 with ab7279 at 1/50 dilution. The tissue was paraformaldehyde fixed and permeabilized with triton x-100 before incubation with the antibody for 16 hours at 4°C.



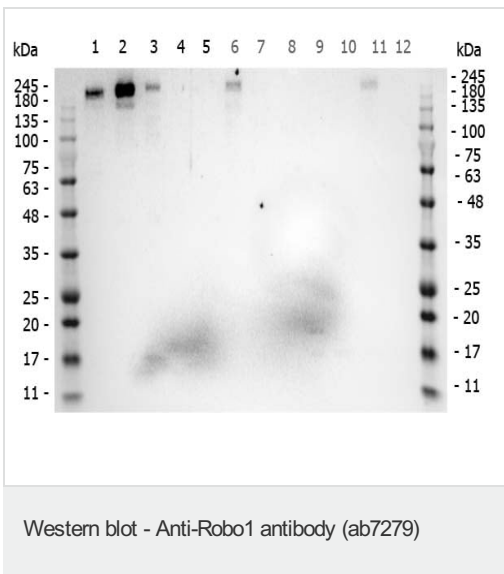
Western blot - Anti-Robo1 antibody (ab7279)

This image is courtesy of an anonymous Abreview.

Anti-Robo1 antibody (ab7279) at 1/1000 dilution + HEK 293T cells at 25  $\mu$ g

Developed using the ECL technique.

Performed under reducing conditions.



**All lanes :** Anti-Robo1 antibody (ab7279) at 1 µg/ml

**Lane 1 :** HEK-293 (human epithelial cell line from embryonic kidney) whole cell lysate

**Lane 2 :** HeLa (human epithelial cell line from cervix adenocarcinoma) whole cell lysate

**Lane 3 :** MCF7 (human breast adenocarcinoma cell line) whole cell lysate

**Lane 4 :** Jurkat (human T cell leukemia cell line from peripheral blood) whole cell lysate

**Lane 5 :** A431 (human epidermoid carcinoma cell line) whole cell lysate

**Lane 6 :** A549 (human lung carcinoma cell line) whole cell lysate

**Lane 7 :** LNCaP (human prostate cancer cell line) whole cell lysate

**Lane 8 :** MOLT-4 (human lymphoblastic leukemia cell line) whole cell lysate

**Lane 9 :** Ramos (human Burkitt's lymphoma cell line) whole cell lysate

**Lane 10 :** Raji (human Burkitt's lymphoma cell line) whole cell lysate

**Lane 11 :** A-172 (human brain glioblastoma) whole cell lysate

**Lane 12 :** NIH/3T3 (mouse embryo fibroblast cell line) whole cell lysate

Lysates/proteins at 35 µg per lane.

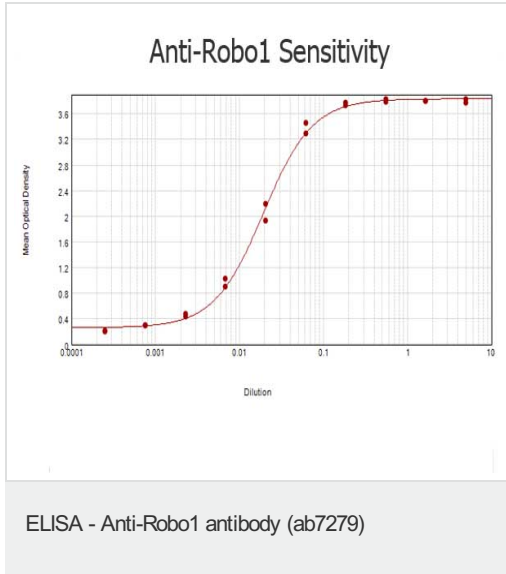
### Secondary

**All lanes :** Peroxidase Rabbit secondary antibody for 60 minutes at room temperature at 1/30000 dilution

**Observed band size:** 181 kDa

Primary antibody incubated overnight at 4C.

Blocking Buffer: 1% Casein-TTBS for 30 min at room temperature.



ELISA results of purified ab7279 tested against BSA-conjugated peptide of immunizing peptide. Each well was coated in duplicate with 0.1 µg of conjugate. The starting dilution of antibody was 5 µg/ml and the X-axis represents the Log10 of a 3-fold dilution. This titration is a 4-parameter curve fit where the IC50 is defined as the titer of the antibody. Assay performed using 3% fish gel, Goat anti-Rabbit IgG Antibody Peroxidase Conjugated secondary and TMB ELISA Peroxidase Substrate.

**Please note:** All products are "FOR RESEARCH USE ONLY. NOT FOR USE IN DIAGNOSTIC PROCEDURES"

#### Our Abpromise to you: Quality guaranteed and expert technical support

- Replacement or refund for products not performing as stated on the datasheet
- Valid for 12 months from date of delivery
- Response to your inquiry within 24 hours
- We provide support in Chinese, English, French, German, Japanese and Spanish
- Extensive multi-media technical resources to help you
- We investigate all quality concerns to ensure our products perform to the highest standards

If the product does not perform as described on this datasheet, we will offer a refund or replacement. For full details of the Abpromise, please visit <https://www.abcam.cn/abpromise> or contact our technical team.

#### Terms and conditions

- Guarantee only valid for products bought direct from Abcam or one of our authorized distributors