

# Anti-Prostate Specific Antigen antibody [8301] ab403

★★★★★ 1 Abreviews 5 References 1 图像

## 概述

<b>产品名称</b>	Anti-Prostate Specific Antigen抗体[8301]
<b>描述</b>	小鼠单克隆抗体[8301] to Prostate Specific Antigen
<b>宿主</b>	Mouse
<b>特异性</b>	Human prostate-specific antigen - 100% PSA/alpha-1-ACT-complex - 59% Kallikrein - <0.04% PAP - <0.04% Cross-reactivity values have been calculated on weight/weight basis using 125-I-labelled human human prostate-specific antigen in assay. They can vary because of the presence of antigen or related impurities in protein preparations used for cross reactivity assays. Affinity constant: $1 \times 10^{11}$ l/mol human prostate-specific antigen.
<b>经测试应用</b>	<b>适用于:</b> IHC-P
<b>种属反应性</b>	<b>与反应:</b> Human
<b>免疫原</b>	native protein (purified), corresponding to amino acids 158-163 of Human Prostate Specific Antigen
<b>常规说明</b>	<p>The Life Science industry has been in the grips of a reproducibility crisis for a number of years. Abcam is leading the way in addressing this with our range of recombinant monoclonal antibodies and knockout edited cell lines for gold-standard validation. Please check that this product meets your needs before purchasing.</p> <p>If you have any questions, special requirements or concerns, please send us an inquiry and/or contact our Support team ahead of purchase. Recommended alternatives for this product can be found below, along with publications, customer reviews and Q&amp;As</p>

## 性能

<b>形式</b>	Liquid
<b>存放说明</b>	Shipped at 4°C. Store at +4°C short term (1-2 weeks). Store at -20°C or -80°C. Avoid freeze / thaw cycle.
<b>存储溶液</b>	<p>pH: 6.00</p> <p>Preservative: 0.095% Sodium azide</p> <p>Constituents: 0.335% PBS, 1.0878% Sodium citrate, 0.9% Sodium chloride</p>
<b>纯度</b>	Protein A purified
<b>克隆</b>	单克隆
<b>克隆编号</b>	8301

骨髓瘤	unknown
同种型	IgG1
轻链类型	unknown

## 应用

**The Abpromise guarantee** [Abpromise™](#) 承诺保证使用ab403于以下的经测试应用

“应用说明”部分 下显示的仅为推荐的起始稀释度;实际最佳的稀释度/浓度应由使用者检定。

应用	Ab评论	说明
IHC-P		

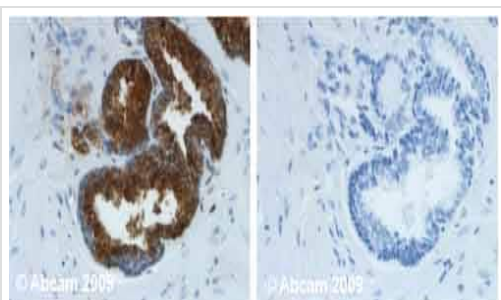
### 应用说明

ELISA: Use at an assay dependant concentration.  
 IHC-P: Use at an assay dependent dilution.  
 RIA: Use at an assay dependant concentration.  
 Nanowires array: 1/50 - 1/500.  
 Not tested in other applications.  
 Optimal dilutions/concentrations should be determined by the end user.

## 靶标

功能	Hydrolyzes semenogelin-1 thus leading to the liquefaction of the seminal coagulum.
序列相似性	Belongs to the peptidase S1 family. Kallikrein subfamily. Contains 1 peptidase S1 domain.
细胞定位	Secreted.

## 图片



Immunohistochemistry (Formalin/PFA-fixed paraffin-embedded sections) - Anti-Prostate Specific Antigen antibody [8301] (ab403)

Human normal prostate. Staining is localised as cytoplasmic and secreted. Left panel: with primary antibody at 1 µg/ml. Right panel: isotype control. Sections were stained using an automated system, at room temperature: sections were rehydrated and antigen retrieved with buffers (citrate pH 6.1) in a PT Link. Slides were peroxidase blocked in 3% H<sub>2</sub>O<sub>2</sub> in methanol for 10 mins. They were then blocked with protein block for 10 minutes (containing casein 0.25% in PBS) then incubated with primary antibody for 20 min and detected for 30 minutes. Colorimetric detection was completed with Diaminobenzidine for 5 minutes. Slides were counterstained with Haematoxylin and coverslipped under DePeX. Please note that for manual staining we recommend to optimize the primary antibody concentration and incubation time (overnight incubation), and amplification may be required.

**Please note:** All products are "FOR RESEARCH USE ONLY. NOT FOR USE IN DIAGNOSTIC PROCEDURES"

### **Our Abpromise to you: Quality guaranteed and expert technical support**

---

- Replacement or refund for products not performing as stated on the datasheet
- Valid for 12 months from date of delivery
- Response to your inquiry within 24 hours
  
- We provide support in Chinese, English, French, German, Japanese and Spanish
- Extensive multi-media technical resources to help you
- We investigate all quality concerns to ensure our products perform to the highest standards

If the product does not perform as described on this datasheet, we will offer a refund or replacement. For full details of the Abpromise, please visit <https://www.abcam.cn/abpromise> or contact our technical team.

### **Terms and conditions**

---

- Guarantee only valid for products bought direct from Abcam or one of our authorized distributors