

# Rabbit monoclonal [H19-5] Anti-Human kappa light chain ab125919

**重组** RabMAb

**3 References** [6 图像](#)

### 概述

产品名称	兔单克隆抗体[H19-5]抗人kappa light chain
宿主	Rabbit
靶标种属	Human
经测试应用	适用于: WB, ELISA
免疫原	Other Immunogen Type corresponding to Human Kappa light chain.

### 性能

形式	Liquid
存放说明	Shipped at 4°C. Store at +4°C short term (1-2 weeks). Upon delivery aliquot. Store at -20°C or -80°C. Avoid freeze / thaw cycle.
存储溶液	pH: 7.2 Preservative: 0.01% Sodium azide Constituents: 0.05% BSA, 99% PBS
纯度	Protein A purified
克隆	单克隆
克隆编号	H19-5
同种型	IgG
常规说明	Mouse, Rat: We have preliminary internal testing data to indicate this antibody may not react with these species. Please contact us for more information.  This product is a recombinant monoclonal antibody, which offers several advantages including: - High batch-to-batch consistency and reproducibility - Improved sensitivity and specificity - Long-term security of supply - Animal-free production For more information <a href="#">see here</a> .  Our RabMAb <sup>®</sup> technology is a patented hybridoma-based technology for making rabbit monoclonal antibodies. For details on our patents, please refer to <a href="#">RabMAb<sup>®</sup> patents</a> .

## 应用

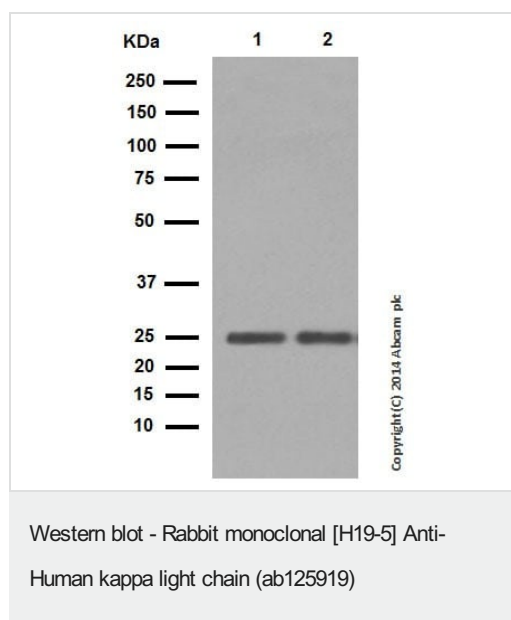
### The Abpromise guarantee

**Abpromise™** 承诺保证使用 ab125919 于以下的经测试应用

“应用说明”部分下显示的仅为推荐的起始稀释度；实际最佳的稀释度/浓度应由使用者检定。

应用	Ab评论	说明
WB		1/5000. For unpurified use at 1/1000 - 1/10000.
ELISA		Use a concentration of 1 µg/ml. For unpurified use at 1/1000 - 1/10000.

## 图片



**All lanes** : Rabbit monoclonal [H19-5] Anti-Human kappa light chain (ab125919) at 1/5000 dilution

**Lane 1** : Human spleen tissue lysate

**Lane 2** : Human thymus tissue lysate

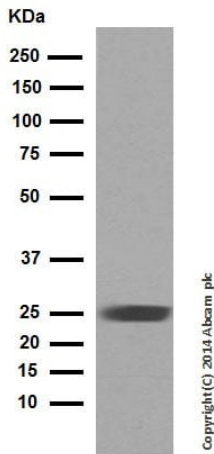
Lysates/proteins at 20 µg per lane.

### Secondary

**All lanes** : Anti-Rabbit IgG (HRP), specific to the non-reduced form of IgG at 1/1000 dilution

**Observed band size:** 25 kDa

Blocking and diluting buffer: 5% NFDM/TBST.



Western blot - Rabbit monoclonal [H19-5] Anti-Human kappa light chain (ab125919)

Rabbit monoclonal [H19-5] Anti-Human kappa light chain (ab125919) at 1/5000 dilution (purified) + Human tonsil tissue lysate at 20 µg

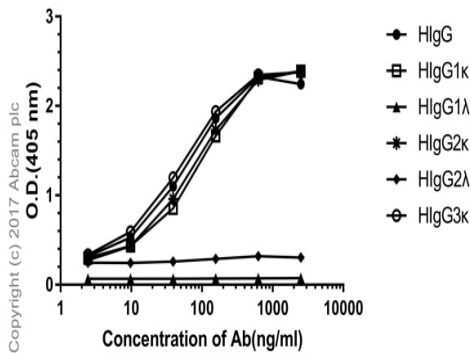
**Secondary**

Anti-Rabbit IgG (HRP), specific to the non-reduced form of IgG at 1/1000 dilution

**Observed band size:** 25 kDa

Blocking and diluting buffer: 5% NFDm/TBST.

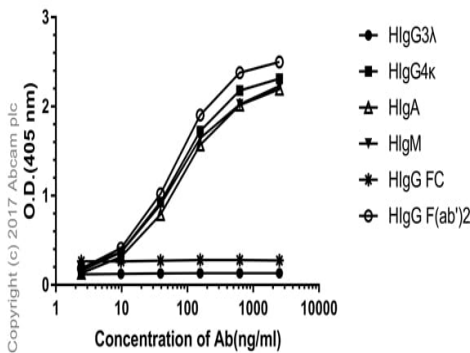
**Direct ELISA antibody dose-response curve**



ELISA - Rabbit monoclonal [H19-5] Anti-Human kappa light chain (ab125919)

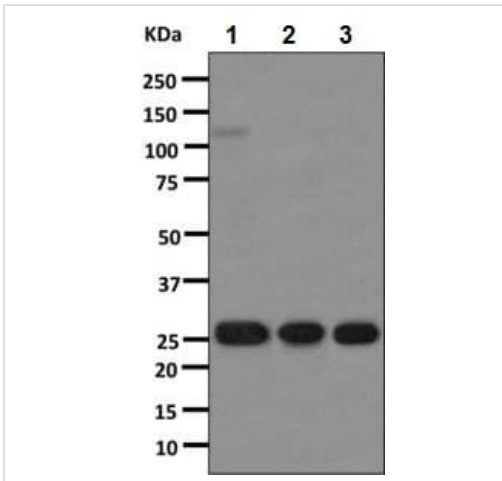
Direct ELISA antibody dose-response curve using ab125919 between 0-2500 ng/ml. Antigen concentration of 1000 ng/mL. An alkaline phosphatase-conjugated goat anti-rabbit IgG (H+L) (1/2500) was used as the secondary antibody.

**Direct ELISA antibody dose-response curve**



ELISA - Rabbit monoclonal [H19-5] Anti-Human kappa light chain (ab125919)

Direct ELISA antibody dose-response curve using ab125919 between 0-2500 ng/ml. Antigen concentration of 1000 ng/mL. An alkaline phosphatase-conjugated goat anti-rabbit IgG (H+L) (1/2500) was used as the secondary antibody.



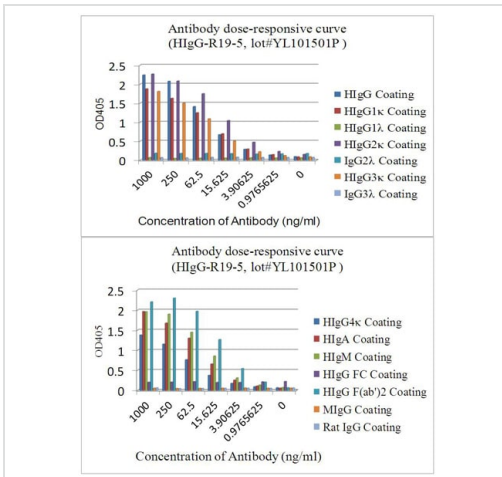
Western blot - Rabbit monoclonal [H19-5] Anti-Human kappa light chain (ab125919)

**All lanes** : Rabbit monoclonal [H19-5] Anti-Human kappa light chain (ab125919) (unpurified)

**Lane 1** : Human spleen tissue lysate

**Lane 2** : Human thymus tissue lysate

**Lane 3** : Human tonsil tissue lysate



ELISA - Rabbit monoclonal [H19-5] Anti-Human kappa light chain (ab125919)

ELISA dose-responsive curve using purified ab125919 at a range of concentrations.

Antigen concentration: 1000ng/ml.

Secondary antibody: Alkaline Phosphatase-conjugated AffiniPure Goat Anti-Rabbit IgG (H+L), 1/2500.

**Please note:** All products are "FOR RESEARCH USE ONLY. NOT FOR USE IN DIAGNOSTIC PROCEDURES"

### Our Abpromise to you: Quality guaranteed and expert technical support

- Replacement or refund for products not performing as stated on the datasheet
- Valid for 12 months from date of delivery
- Response to your inquiry within 24 hours
- We provide support in Chinese, English, French, German, Japanese and Spanish
- Extensive multi-media technical resources to help you
- We investigate all quality concerns to ensure our products perform to the highest standards

If the product does not perform as described on this datasheet, we will offer a refund or replacement. For full details of the Abpromise, please visit <https://www.abcam.cn/abpromise> or contact our technical team.

## Terms and conditions

---

- Guarantee only valid for products bought direct from Abcam or one of our authorized distributors