

Goat Anti-Rabbit IgG H&L (HRP) preadsorbed ab97080

★★★★★ [2 Abreviews](#) [203 References](#) [2 图像](#)

概述

产品名称	山羊抗兔IgG H&L (HRP)预吸附二抗
宿主	Goat
靶标种属	Rabbit
特异性	By immunoelectrophoresis and ELISA this antibody reacts specifically with Rabbit IgG and with light chains common to other Rabbit immunoglobulins. No antibody was detected against non immunoglobulin serum proteins. Reduced cross-reactivity to bovine, chicken, goat, horse, human, mouse, pig and rat IgG was detected.
经测试应用	适用于: ICC, IHC-P, ELISA, WB
最小交叉反应	Chicken, Cow, Horse, Human, Mouse, Pig, Rat more details
偶联物	HRP

性能

形式	Liquid
存放说明	Shipped at 4°C. Store at +4°C.
存储溶液	pH: 6.8 Constituents: 0.2% BSA, 0.05% CMIT/MIT based preservative
纯度	Immunogen affinity purified
纯化说明	Antiserum was cross absorbed using bovine, chicken, horse, human, mouse, pig and rat immunosorbents to remove cross reactive antibodies. This antibody was isolated by affinity chromatography using antigen coupled to agarose beads and conjugated to Horse Radish Peroxidase (HRP).
克隆	多克隆
同种型	IgG

应用

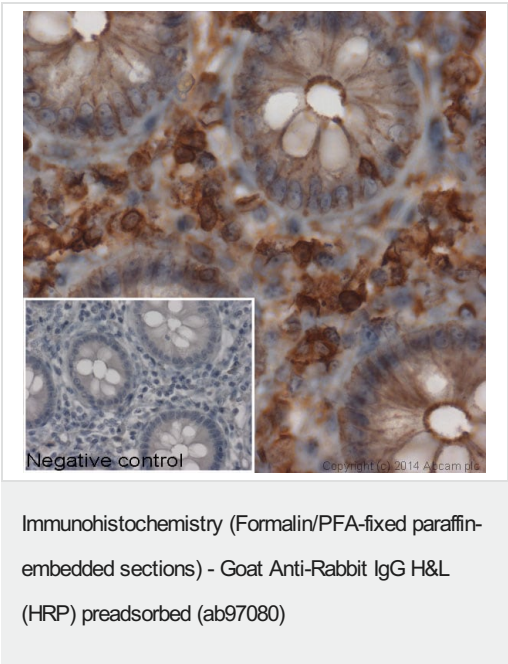
The Abpromise guarantee

Abpromise™ 承诺保证使用ab97080于以下的经测试应用

“应用说明”部分 下显示的仅为推荐的起始稀释度;实际最佳的稀释度/浓度应由使用者检定。

应用	Ab评论	说明
ICC		Use at an assay dependent concentration.
IHC-P		1/200 - 1/5000.
ELISA		1/25000 - 1/75000. as primary.
WB	★★★★★ (1)	1/5000 - 1/50000. Colorimetric: 1/5000 - 1/30000; Chemiluminescent: 1/10000 - 1/50000.

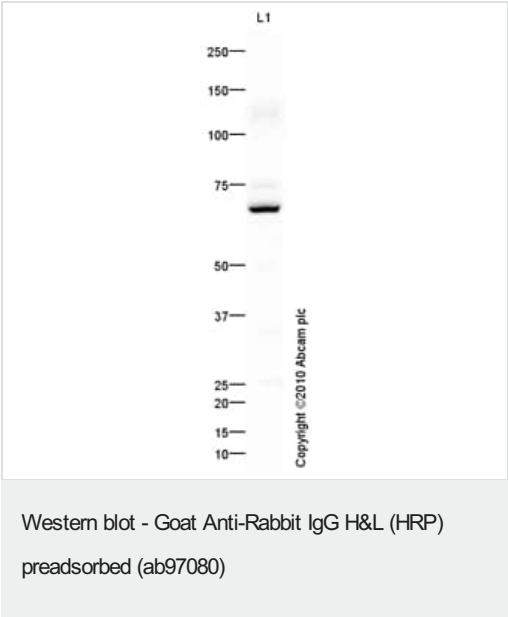
图片



IHC image of beta Actin staining in normal human colon, formalin-fixed and paraffin-embedded tissue*. The section was pre-treated using pressure cooker heat mediated antigen retrieval with sodium citrate buffer (pH6) for 30mins. The section was incubated with [ab8227](#), 3µg/ml overnight at +4°C. An HRP-conjugated secondary (Ab97080, 1/2000 dilution) was used for 1hr at room temperature. The section was counterstained with haematoxylin and mounted with DPX.

The inset negative control image is secondary-only at 1/500 dilution.

*Tissue obtained from the Human Research Tissue Bank, supported by the NIHR Cambridge Biomedical Research Centre



Goat polyclonal Secondary Antibody to Rabbit IgG - H&L (HRP), pre-adsorbed (ab97080) at 1/5000 dilution developed using the ECL technique, with [ab87342](#).

Please note: All products are "FOR RESEARCH USE ONLY. NOT FOR USE IN DIAGNOSTIC PROCEDURES"

Our Abpromise to you: Quality guaranteed and expert technical support

- Replacement or refund for products not performing as stated on the datasheet
- Valid for 12 months from date of delivery
- Response to your inquiry within 24 hours

- We provide support in Chinese, English, French, German, Japanese and Spanish
- Extensive multi-media technical resources to help you
- We investigate all quality concerns to ensure our products perform to the highest standards

If the product does not perform as described on this datasheet, we will offer a refund or replacement. For full details of the Abpromise, please visit <https://www.abcam.cn/abpromise> or contact our technical team.

Terms and conditions

- Guarantee only valid for products bought direct from Abcam or one of our authorized distributors