

Goat Anti-Rabbit IgG H&L (Alexa Fluor® 555) preadsorbed
ab150082

8 References 4 图像

概述	
产品名称	山羊抗兔IgG H&L (Alexa Fluor® 555)预吸附二抗
宿主	Goat
靶标种属	Rabbit
特异性	By immunoelectrophoresis and ELISA this antibody reacts specifically with rabbit IgG and with light chains common to other rabbit immunoglobulins. No antibody was detected against non-immunoglobulin serum proteins. Reduced cross-reactivity to bovine, chicken, horse, human, mouse, pig, and rat IgG was detected. This antibody may cross react with IgG from other species.
经测试应用	适用于: IHC-Fr, Flow Cyt, IHC-P, ELISA, ICC/IF
最小交叉反应	Human, Mouse, Rat more details
免疫原	Other Immunogen Type corresponding to Rabbit IgG.
偶联物	Alexa Fluor® 555. Ex: 555nm, Em: 565nm
性能	
形式	Liquid
存放说明	Shipped at 4°C. Store at +4°C short term (1-2 weeks). Upon delivery aliquot. Store at -20°C. Avoid freeze / thaw cycle. Stable for 12 months at -20°C. Store In the Dark.
存储溶液	Preservative: 0.02% Sodium azide Constituents: 23% Glycerol (glycerin, glycerine), PBS, 1% BSA
纯度	Immunogen affinity purified
纯化说明	Antiserum was cross adsorbed using a human, mouse and rat immunosorbents to remove cross reactive antibodies. The antibody to rabbit IgG was isolated by affinity chromatography using antigen coupled to agarose beads.
克隆	多克隆
同种型	IgG
常规说明	Alexa Fluor® is a registered trademark of Molecular Probes, Inc, a Thermo Fisher Scientific

Company. The Alexa Fluor[®] dye included in this product is provided under an intellectual property license from Life Technologies Corporation. As this product contains the Alexa Fluor[®] dye, the purchase of this product conveys to the buyer the non-transferable right to use the purchased product and components of the product only in research conducted by the buyer (whether the buyer is an academic or for-profit entity). As this product contains the Alexa Fluor[®] dye the sale of this product is expressly conditioned on the buyer not using the product or its components, or any materials made using the product or its components, in any activity to generate revenue, which may include, but is not limited to use of the product or its components: in manufacturing; (ii) to provide a service, information, or data in return for payment (iii) for therapeutic, diagnostic or prophylactic purposes; or (iv) for resale, regardless of whether they are sold for use in research. For information on purchasing a license to this product for purposes other than research, contact Life Technologies Corporation, 5781 Van Allen Way, Carlsbad, CA 92008 USA or outlicensing@thermofisher.com.

应用

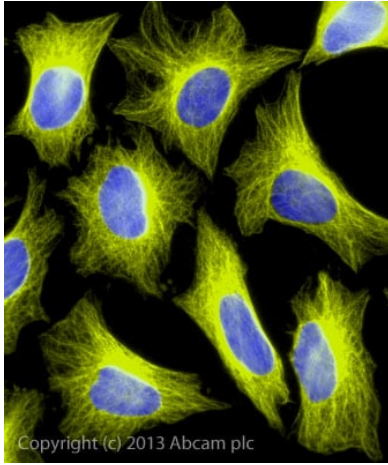
The Abpromise guarantee

Abpromise™ 承诺保证使用 ab150082 于以下的经测试应用

“应用说明”部分 下显示的仅为推荐的起始稀释度；实际最佳的稀释度/浓度应由使用者检定。

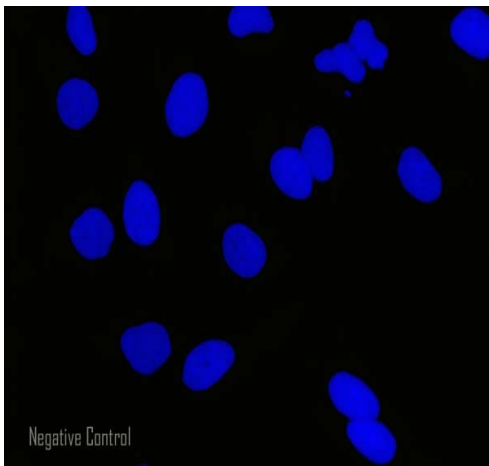
应用	Ab 评论	说明
IHC-Fr		Use at an assay dependent concentration.
Flow Cyt		1/2000.
IHC-P		Use at an assay dependent concentration.
ELISA		Use at an assay dependent concentration.
ICC/IF		1/200 - 1/1000.

图片



Immunocytochemistry/ Immunofluorescence - Goat
Anti-Rabbit IgG H&L (Alexa Fluor® 555)
preadsorbed (ab150082)

ICC/IF image of **ab6046** stained HeLa cells. The cells were 100% methanol fixed (5 min) and then incubated in 1%BSA / 10% normal goat serum / 0.3M glycine in 0.1% PBS-Tween for 1h to permeabilise the cells and block non-specific protein-protein interactions. The cells were then incubated with the antibody (**ab6046**, 1µg/ml) overnight at +4°C. The secondary antibody (yellow) was ab150082 Alexa Fluor® 555 goat anti-rabbit IgG (H+L) used at 2µg/ml for 1h. DAPI was used to stain the cell nuclei (blue) at a concentration of 1.43µM.



Immunocytochemistry/ Immunofluorescence - Goat
Anti-Rabbit IgG H&L (Alexa Fluor® 555)
preadsorbed (ab150082)

HeLa cells showing negative staining by ICC/IF using only secondary antibody. The cells were 100% methanol fixed (5 min) and then incubated in 1%BSA / 10% normal goat serum / 0.3M glycine in 0.1% PBS-Tween for 1h to permeabilise the cells and block non-specific protein-protein interactions. The secondary antibody (yellow) was ab150082 Alexa Fluor® 555 goat anti-rabbit IgG (H+L) used at 2µg/ml for 1h. DAPI was used to stain the cell nuclei (blue) at a concentration of 1.43µM.

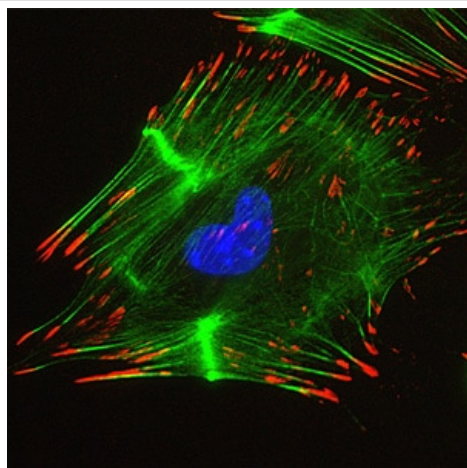


Image: Courtesy of Dr. Shaohua Li, UMDNJ-Robert Wood Johnson Medical School

Sample: mouse embryonic fibroblasts

Preparation:

Fix in 3% PFA in PBS for 30 min at RT

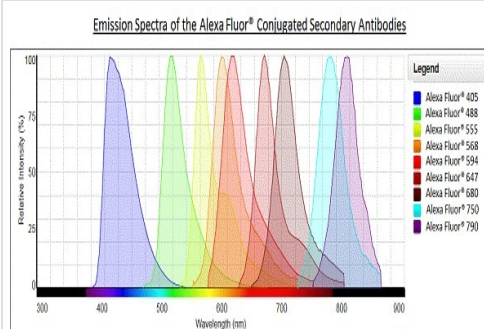
Primary antibody: Rabbit anti-integrin beta3 (**ab75872**), 1:100

Secondary antibody: Goat polyclonal Secondary Antibody to Rabbit IgG - H&L (Alexa Fluor® 555) pre-adsorbed (ab150082), 1:200

FITC-phalloidin, 1:100

Immunocytochemistry/ Immunofluorescence - Goat Anti-Rabbit IgG H&L (Alexa Fluor® 555) preadsorbed (ab150082)

This image is courtesy of Dr. Shaohua Li



Alexa Fluor® - Goat Anti-Rabbit IgG H&L (Alexa Fluor® 555) preadsorbed (ab150082)

Please note: All products are "FOR RESEARCH USE ONLY. NOT FOR USE IN DIAGNOSTIC PROCEDURES"

Our Abpromise to you: Quality guaranteed and expert technical support

- Replacement or refund for products not performing as stated on the datasheet
- Valid for 12 months from date of delivery
- Response to your inquiry within 24 hours
- We provide support in Chinese, English, French, German, Japanese and Spanish
- Extensive multi-media technical resources to help you
- We investigate all quality concerns to ensure our products perform to the highest standards

If the product does not perform as described on this datasheet, we will offer a refund or replacement. For full details of the Abpromise, please visit <https://www.abcam.cn/abpromise> or contact our technical team.

Terms and conditions

- Guarantee only valid for products bought direct from Abcam or one of our authorized distributors