

Goat Anti-Mouse IgM mu chain (DyLight® 488) ab97007

[1 References](#) [2 图像](#)

概述

产品名称	山羊抗小鼠IgM mu chain (DyLight® 488)
宿主	Goat
靶标种属	Mouse
特异性	By immunoelectrophoresis and ELISA this antibody reacts specifically with Mouse IgM. Cross reactivity with other immunoglobulins and light chains is less than 0.1%.
经测试应用	适用于: Flow Cyt, ICC/IF, IHC-P
偶联物	DyLight® 488. Ex: 493nm, Em: 518nm

性能

形式	Liquid
存放说明	Shipped at 4°C. Store at +4°C.
存储溶液	pH: 6.8 Preservative: 0.09% Sodium azide Constituents: 0.2% BSA, PBS
纯度	Immunogen affinity purified
纯化说明	Antiserum was solid phase adsorbed to ensure class specificity. This antibody was isolated by affinity chromatography using antigen coupled to agarose beads and conjugated to DyLight® 488.
克隆	多克隆
同种型	IgG

应用

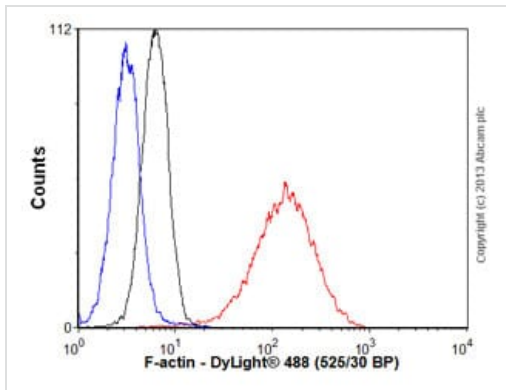
The Abpromise guarantee **Abpromise™** 承诺保证使用ab97007于以下的经测试应用

“应用说明”部分 下显示的仅为推荐的起始稀释度;实际最佳的稀释度/浓度应由使用者检定。

应用	Ab评论	说明
Flow Cyt		1/50 - 1/500.

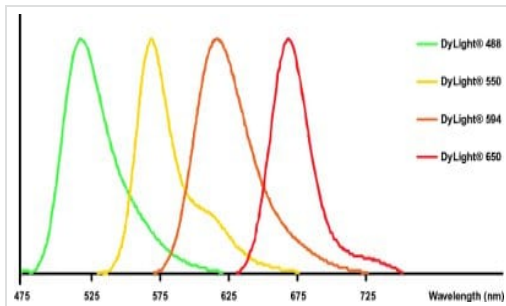
应用	Ab评论	说明
ICC/IF		1/50 - 1/500.
IHC-P		1/50 - 1/500.

图片



Flow Cytometry - Goat Anti-Mouse IgM mu chain (DyLight® 488) (ab97007)

Overlay histogram showing HeLa cells stained with **ab130935** (red line). The cells were fixed with 4% paraformaldehyde (10 min) and then permeabilized with 0.1% PBS-Triton X-100 for 20 min. The cells were then incubated in 1x PBS / 10% normal goat serum / 0.3M glycine to block non-specific protein-protein interactions followed by the antibody (**ab130935**, 1µg/1x10⁶ cells) for 30 min at 22°C. The secondary antibody used was DyLight® 488 goat anti-mouse IgM (mu chain) at 1/500 dilution for 30 min at 22°C. Isotype control antibody (black line) was mouse IgM [ICIGM] (**ab91545**, 2µg/1x10⁶ cells) used under the same conditions. Unlabelled sample (blue line) was also used as a control. Acquisition of >5,000 events were collected using a 20mW Argon ion laser (488nm) and 525/30 bandpass filter. This antibody gave a positive signal in HeLa fixed with 80% methanol (5 min)/permeabilized with 0.1% PBS-Triton X-100 for 20 min used under the same conditions.



Goat Anti-Mouse IgM mu chain (DyLight® 488) (ab97007)

Emission spectra of DyLight® fluorochromes available in our catalog.

Line colors represent the approximate visible colors of the wavelength maxima.

Please note: All products are "FOR RESEARCH USE ONLY. NOT FOR USE IN DIAGNOSTIC PROCEDURES"

Our Abpromise to you: Quality guaranteed and expert technical support

- Replacement or refund for products not performing as stated on the datasheet
- Valid for 12 months from date of delivery
- Response to your inquiry within 24 hours

- We provide support in Chinese, English, French, German, Japanese and Spanish
- Extensive multi-media technical resources to help you
- We investigate all quality concerns to ensure our products perform to the highest standards

If the product does not perform as described on this datasheet, we will offer a refund or replacement. For full details of the Abpromise, please visit <https://www.abcam.cn/abpromise> or contact our technical team.

Terms and conditions

- Guarantee only valid for products bought direct from Abcam or one of our authorized distributors