

Goat Anti-Mouse IgG H&L (HRP) ab97023

★★★★★ 4 Abreviews 352 References 3 图像

概述

|       |  |
|-------|--|
| 产品名称  | 山羊抗小鼠IgG H&L (HRP)   |
| 宿主    | Goat   |
| 靶标种属  | Mouse  |
| 特异性   | By immunoelectrophoresis and ELISA this antibody reacts specifically with Mouse IgG and with light chains common to other Mouse immunoglobulins. No antibody was detected against non immunoglobulin serum proteins. |
| 经测试应用 | 适用于: ICC, IHC-P, ELISA, WB   |
| 偶联物   | HRP  |

性能

|      |   |
|------|---|
| 形式   | Liquid  |
| 存放说明 | Shipped at 4°C. Store at +4°C.  |
| 存储溶液 | pH: 6.8<br>Constituents: 0.2% BSA, 0.05% CMIT/MIT based preservative  |
| 纯度   | Immunogen affinity purified   |
| 纯化说明 | This antibody was isolated by affinity chromatography using antigen coupled to agarose beads and conjugated to Horse Radish Peroxidase (HRP). |
| 共轭说明 | Molar enzyme/ antibody protein ratio is 4:1   |
| 克隆   | 多克隆   |
| 同种型  | IgG   |
| 常规说明 | Part of the <b>AbExcel</b> range.   |

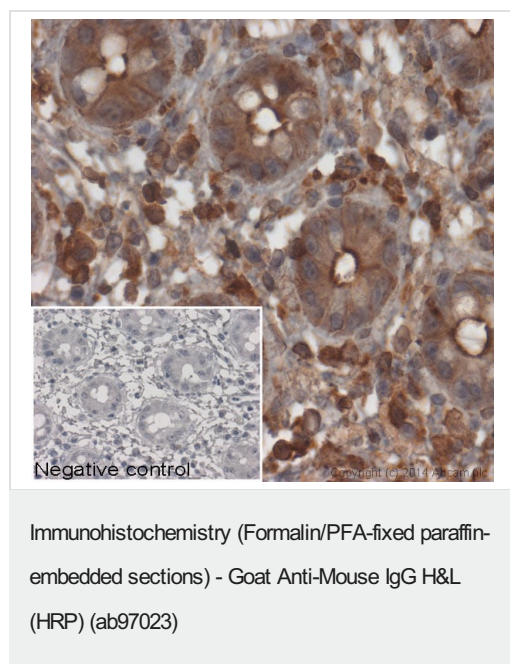
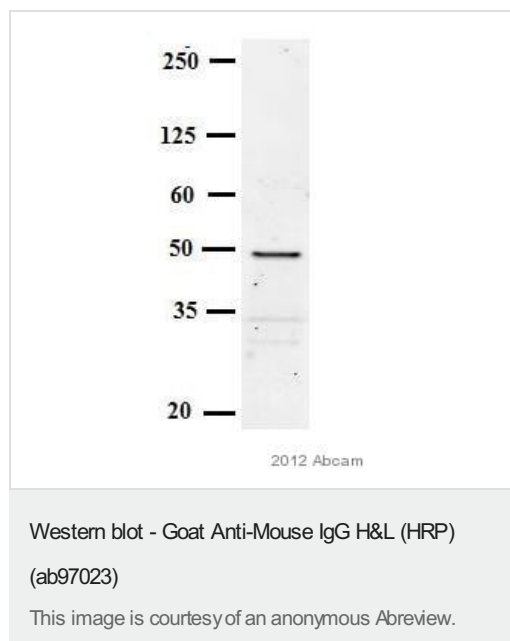
应用

The Abpromise guarantee      **Abpromise™**承诺保证使用ab97023于以下的经测试应用

“应用说明”部分 下显示的仅为推荐的起始稀释度;实际最佳的稀释度/浓度应由使用者检定。

| 应用    | Ab评论      | 说明                                  |
|-------|-----------|-------------------------------------|
| ICC   |           | Use at an assay dependent dilution. |
| IHC-P |           | 1/200 - 1/5000.                     |
| ELISA | ★★★★★ (1) | 1/10000 - 1/100000.                 |
| WB    | ★★★★★ (3) | 1/2000 - 1/20000.                   |

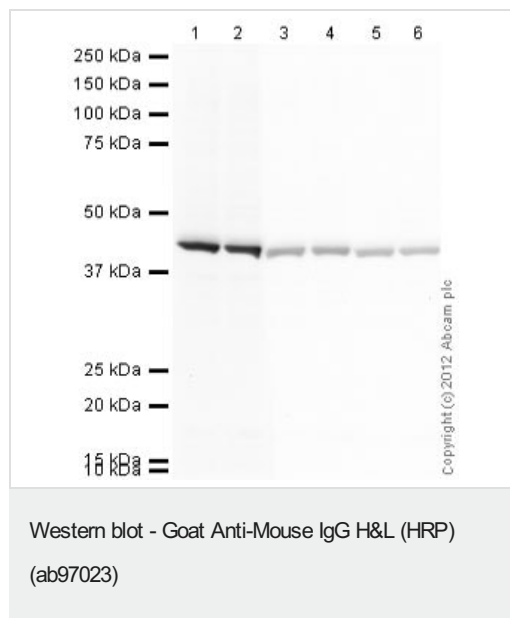
## 图片



IHC image of beta actin staining in human colon formalin fixed paraffin embedded tissue section\*. The section was pre-treated using pressure cooker heat mediated antigen retrieval with sodium citrate buffer (pH6) for 30mins. The section was incubated with **ab8224**, 3µg/ml overnight at +4°C. An HRP-conjugated secondary (ab97023, 1/2000 dilution) was used for 1hr at room temperature. The section was counterstained with haematoxylin and mounted with DPX.

The inset negative control image is secondary-only at 1/500 dilution.

\*Tissue obtained from the Human Research Tissue Bank, supported by the NIHR Cambridge Biomedical Research Centre



**All lanes :** Anti-beta Actin antibody [mAbcam 8226] - Loading Control (**ab8226**) at 1 µg/ml

**Lanes 1-6 :** HeLa (Human epithelial carcinoma cell line) Whole Cell Lysate  
Lysates/proteins at 10 µg per lane.

#### Secondary

**Lanes 1 - 2 :** Goat polyclonal Secondary Antibody to Mouse IgG - H&L (HRP) (ab97023) at 1/2000 dilution

**Lanes 3 - 4 :** Goat polyclonal Secondary Antibody to Mouse IgG - H&L (HRP) (ab97023) at 1/10000 dilution

**Lanes 5 - 6 :** Goat polyclonal Secondary Antibody to Mouse IgG - H&L (HRP) (ab97023) at 1/20000 dilution

Developed using the ECL technique

Performed under reducing conditions.

**Exposure time :** 20 seconds

**Please note:** All products are "FOR RESEARCH USE ONLY. NOT FOR USE IN DIAGNOSTIC PROCEDURES"

### Our Abpromise to you: Quality guaranteed and expert technical support

- Replacement or refund for products not performing as stated on the datasheet
- Valid for 12 months from date of delivery
- Response to your inquiry within 24 hours
- We provide support in Chinese, English, French, German, Japanese and Spanish
- Extensive multi-media technical resources to help you
- We investigate all quality concerns to ensure our products perform to the highest standards

If the product does not perform as described on this datasheet, we will offer a refund or replacement. For full details of the Abpromise, please visit <https://www.abcam.cn/abpromise> or contact our technical team.

### Terms and conditions

- Guarantee only valid for products bought direct from Abcam or one of our authorized distributors