

Donkey Anti-Sheep IgG H&L (HRP) ab6900

24 References 3 图像

概述

产品名称	驴抗羊IgG H&L (HRP)
宿主	Donkey
靶标种属	Sheep
经测试应用	适用于: ICC/IF, IHC-Fr, IHC-P, WB, ELISA, Immunomicroscopy, Dot blot
免疫原	Full length native Sheep IgG (purified).
偶联物	HRP

性能

形式	Liquid
存放说明	Shipped at 4°C. Store at +4°C.
存储溶液	pH: 6.50 Preservative: 0.01% Gentamicin sulphate Constituents: 0.42% Tripotassium orthophosphate, 0.87% Sodium chloride, 1% BSA
纯度	Affinity purified
纯化说明	This product was prepared from monospecific antiserum by immunoaffinity chromatography using Sheep IgG coupled to agarose beads followed by solid phase adsorption(s) to remove any unwanted reactivities
共轭说明	Horseradish Peroxidase (HRP)
克隆	多克隆
同种型	IgG

应用

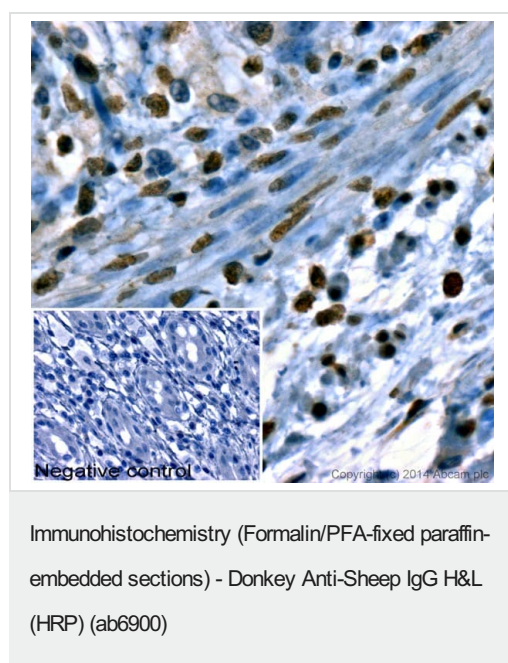
The Abpromise guarantee **Abpromise™**承诺保证使用ab6900于以下的经测试应用

“应用说明”部分 下显示的仅为推荐的起始稀释度;实际最佳的稀释度/浓度应由使用者检定。

应用	Ab评论	说明
ICC/IF		1/1000 - 1/5000.

应用	Ab评论	说明
IHC-Fr		1/1000 - 1/5000.
IHC-P		1/1000 - 1/5000.
WB		1/3000 - 1/15000.
ELISA		1/150000.
Immunomicroscopy		Use at an assay dependent dilution.
Dot blot		Use at an assay dependent dilution.

图片



IHC image of Histone H3 staining in human normal colon formalin fixed paraffin embedded tissue section*.

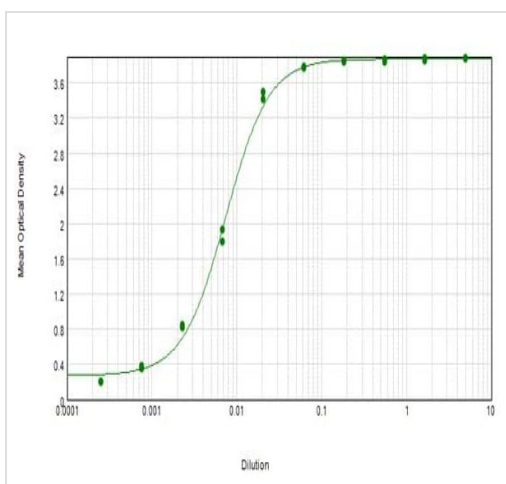
The section was pre-treated using pressure cooker heat mediated antigen retrieval with sodium citrate buffer (pH 6) for 30 mins. The section was incubated with [ab128012](#), 10 µg/ml overnight at +4°C. An HRP-conjugated secondary (ab6900, 1/1000 dilution) was used for 1 hr at room temperature. The section was counterstained with hematoxylin and mounted with DPX.

The inset **negative control** image is taken from an identical assay without primary antibody.

*Tissue obtained from the Human Research Tissue Bank, supported by the NIHR Cambridge Biomedical Research Centre



ab6900 was used at dilution 1/20000 with the primary antibody [ab30524](#) in WB. See the review on [ab30524](#).



ELISA - Donkey Anti-Sheep IgG H&L (HRP)
(ab6900)

ELISA results of purified ab6900 tested against purified Sheep IgG.

Each well was coated in duplicate with 1.0 µg of Sheep IgG. The starting dilution of antibody was 5 µg/ml and the X-axis represents the Log₁₀ of a 3-fold dilution. This titration is a 4-parameter curve fit where the IC₅₀ is defined as the titer of the antibody. Assay performed using 3% fish gelatin as blocking buffer and TMB substrate.

Please note: All products are "FOR RESEARCH USE ONLY. NOT FOR USE IN DIAGNOSTIC PROCEDURES"

Our Abpromise to you: Quality guaranteed and expert technical support

- Replacement or refund for products not performing as stated on the datasheet
- Valid for 12 months from date of delivery
- Response to your inquiry within 24 hours
- We provide support in Chinese, English, French, German, Japanese and Spanish
- Extensive multi-media technical resources to help you
- We investigate all quality concerns to ensure our products perform to the highest standards

If the product does not perform as described on this datasheet, we will offer a refund or replacement. For full details of the Abpromise, please visit <https://www.abcam.cn/abpromise> or contact our technical team.

Terms and conditions

- Guarantee only valid for products bought direct from Abcam or one of our authorized distributors