

Donkey Anti-Mouse IgG H&L (HRP) ab6820

39 References 2 图像

概述

产品名称	驴抗小鼠IgG H&L (HRP)
宿主	Donkey
靶标种属	Mouse
经测试应用	适用于: Dot blot, ELISA, IHC-P, IHC-Fr, WB, ICC/IF
免疫原	mouse IgG whole molecule
偶联物	HRP

性能

形式	Liquid
存放说明	Shipped at 4°C. Store at +4°C.
存储溶液	Preservative: 0.01% Gentamicin sulphate Constituents: 0.878% Sodium chloride, 1% BSA, 0.424% Potassium phosphate
纯度	Affinity purified
纯化说明	This product was prepared from monospecific antiserum by immunoaffinity chromatography using mouse IgG coupled to agarose beads followed by solid phase adsorption(s) to remove any unwanted reactivities.
共轭说明	Horseradish Peroxidase (HRP)
克隆	多克隆
同种型	IgG

应用

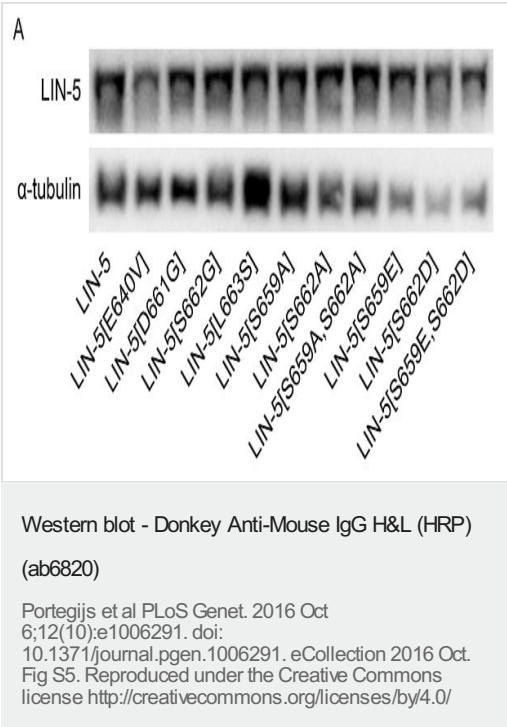
The Abpromise guarantee      **Abpromise™**承诺保证使用ab6820于以下的经测试应用

“应用说明”部分 下显示的仅为推荐的起始稀释度;实际最佳的稀释度/浓度应由使用者检定。

应用	Ab评论	说明
Dot blot		Use at an assay dependent concentration.

应用	Ab评论	说明
ELISA		1/70000.
IHC-P		1/500 - 1/2000.
IHC-Fr		1/500 - 1/2000.
WB		1/2000 - 1/10000.
ICC/IF		1/500 - 1/2500.

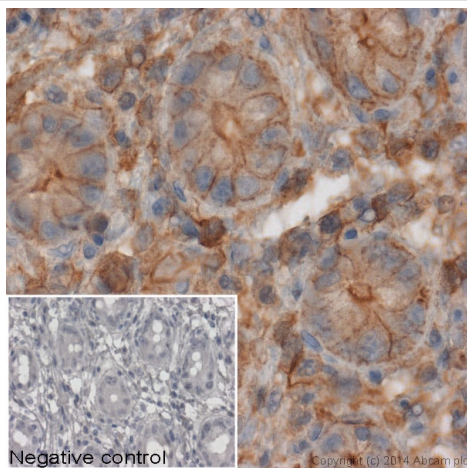
图片



Detection of protein levels in LIN-5 mutants.

(Panel A) Western blots of lysates of yeast clones containing the indicated LIN-5 expression constructs, probed for LIN-5 and tubulin (loading control) levels.

Protein samples were separated on gradient acrylamide gels and subjected to western blotting on polyvinylidene difluoride membrane. Membranes were blocked with 5% skim milk in PBST for 1 hour at room temperature, or overnight at 4°C for stripped blots. For protein detection, primary antibodies used in this study were: mouse anti–LIN-5 (1:1000) and rabbit anti-Tubulin (1:1000, Abcam) for stripped blots. Secondary antibodies used were: donkey anti-mouse HRP (1:5000, Abcam, ab6820) and goat anti-rabbit HRP (1:5000).



Immunohistochemistry (Formalin/PFA-fixed paraffin-embedded sections) - Donkey Anti-Mouse IgG H&L (HRP) (ab6820)

#### IHC image of beta actin staining in human colon formalin fixed paraffin embedded tissue section\*.

The section was pre-treated using pressure cooker heat mediated antigen retrieval with sodium citrate buffer (pH 6) for 30 mins. The section was incubated with **ab8224**, 3 µg/ml overnight at +4°C. An HRP-conjugated secondary (ab6820, 1/2000 dilution) was used for 1 hr at room temperature. The section was counterstained with hematoxylin and mounted with DPX.

The inset **negative control** image is secondary-only at 1/500 dilution.

\*Tissue obtained from the Human Research Tissue Bank, supported by the NIHR Cambridge Biomedical Research Centre

**Please note:** All products are "FOR RESEARCH USE ONLY. NOT FOR USE IN DIAGNOSTIC PROCEDURES"

#### Our Abpromise to you: Quality guaranteed and expert technical support

- Replacement or refund for products not performing as stated on the datasheet
- Valid for 12 months from date of delivery
- Response to your inquiry within 24 hours
- We provide support in Chinese, English, French, German, Japanese and Spanish
- Extensive multi-media technical resources to help you
- We investigate all quality concerns to ensure our products perform to the highest standards

If the product does not perform as described on this datasheet, we will offer a refund or replacement. For full details of the Abpromise, please visit <https://www.abcam.cn/abpromise> or contact our technical team.

#### Terms and conditions

- Guarantee only valid for products bought direct from Abcam or one of our authorized distributors