

Donkey Anti-Mouse IgG H&L (HRP) ab205724

★★★★★ [2 Abreviews](#) [11 References](#) [6 图像](#)

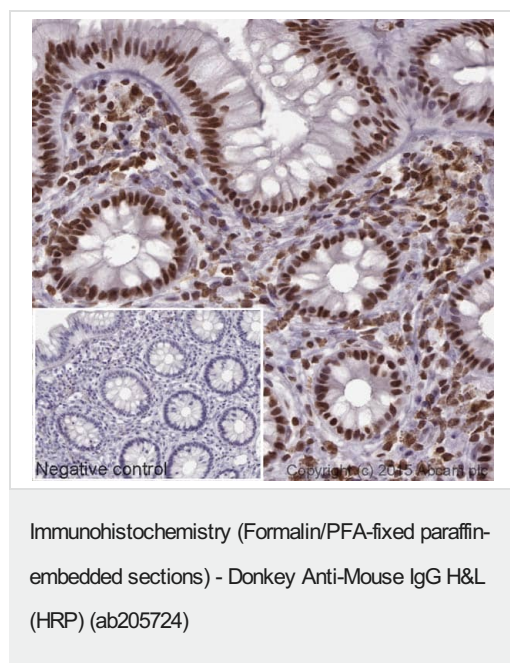
概述	
产品名称	驴抗小鼠IgG H&L (HRP)
宿主	Donkey
靶标种属	Mouse
特异性	The antibody used for conjugation reacts with mouse immunoglobulins of all classes. Cross-reactions as determined by ELISA for the unconjugated antibody (ab182022): Human IgG, rabbit IgG, goat IgG and Chicken IgY, less than 2%. Rat IgG, less than 33%.
经测试应用	适用于: WB, IP, ELISA, IHC-P
免疫原	The details of the immunogen for this antibody are not available.
偶联物	HRP
性能	
形式	Liquid
存放说明	Shipped at 4°C. Store at +4°C short term (1-2 weeks). Upon delivery aliquot. Store at -20°C. Avoid freeze / thaw cycle. Store In the Dark.
存储溶液	pH: 7.40 Preservative: 0.1% Proclin 300 Solution Constituents: PBS, 1% BSA, 30% Glycerol (glycerin, glycerine)
纯度	Immunogen affinity purified
纯化说明	This antibody was isolated by affinity chromatography using antigen coupled to agarose beads and conjugated to Horse Radish Peroxidase (HRP).
克隆	多克隆
同种型	IgG
应用	

The Abpromise guarantee [Abpromise™](#)承诺保证使用ab205724于以下的经测试应用

“应用说明”部分 下显示的仅为推荐的起始稀释度;实际最佳的稀释度/浓度应由使用者检定。

应用	Ab评论	说明
WB	★★★★★ (2)	1/2000 - 1/20000.
IP		Use at an assay dependent concentration.
ELISA		Use at an assay dependent concentration.
IHC-P		1/2000 - 1/20000.

图片



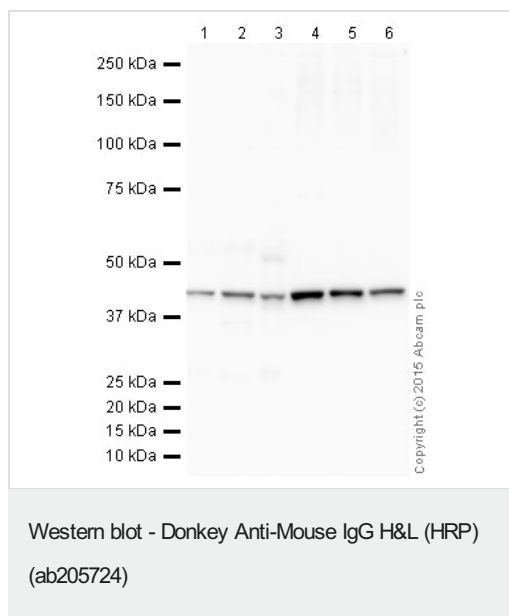
IHC image of Histone H4 staining in a section of formalin-fixed paraffin-embedded normal human colon*. The section was pre-treated using pressure cooker heat mediated antigen retrieval with sodium citrate buffer (pH6) for 30mins, and incubated overnight at +4°C with **ab31830** at 0.5ug/ml. DAB was used as the chromogen (**ab103723**), diluted 1/100 and incubated for 10min at room temperature.

An HRP-conjugated secondary (Ab205724, 1/2000 dilution) was used for 1 hr at room temperature.

The section was counterstained with haematoxylin and mounted with DPX. The inset negative control image is taken from an identical assay without primary antibody.

For other IHC staining systems (automated and non-automated) customers should optimize variable parameters such as antigen retrieval conditions, primary antibody concentration and antibody incubation times.

*Tissue obtained from the Human Research Tissue Bank, supported by the NIHR Cambridge Biomedical Research Centre



All lanes : Anti-beta Actin antibody [mAbcam 8226] - Loading

Control ([ab8226](#)) at 1 µg/ml

Lane 1 : Liver (Human) Tissue Lysate

Lane 2 : Liver (Mouse) Tissue Lysate

Lane 3 : Liver (Rat) Tissue Lysate

Lane 4 : HeLa (Human epithelial carcinoma cell line) Whole Cell Lysate

Lane 5 : NIH 3T3 (Mouse embryonic fibroblast cell line) Whole Cell Lysate

Lane 6 : PC12 (Rat adrenal pheochromocytoma cell line) Whole Cell Lysate

Lysates/proteins at 10 µg per lane.

Secondary

All lanes : Donkey Anti-Mouse IgG H&L (HRP) (ab205724) at 1/2000 dilution

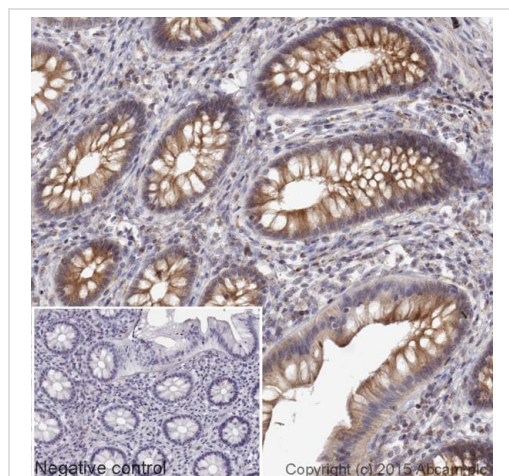
Developed using the ECL technique.

Performed under reducing conditions.

Observed band size: 42 kDa

Exposure time: 15 seconds

This blot was produced using a 4-12% Bis-tris gel under the MOPS buffer system. The gel was run at 200V for 50 minutes before being transferred onto a Nitrocellulose membrane at 30V for 70 minutes. The membrane was then blocked for an hour using 2% Bovine Serum Albumin before being incubated with [ab8226](#) overnight at 4°C. Antibody binding was detected using ab205724, and visualised using ECL development solution [ab133406](#).



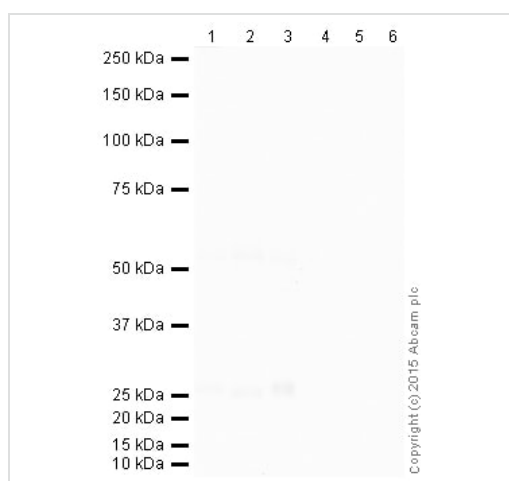
Immunohistochemistry (Formalin/PFA-fixed paraffin-embedded sections) - Donkey Anti-Mouse IgG H&L (HRP) (ab205724)

IHC image of alpha tubulin staining in a section of formalin-fixed paraffin-embedded normal human colon*. The section was pre-treated using pressure cooker heat mediated antigen retrieval with sodium citrate buffer (pH6) for 30mins, and incubated overnight at +4°C with **ab7291** at 0.5ug/ml.

An HRP-conjugated secondary (Ab205725, 1/2000 dilution) was used for 1hr at room temperature. DAB was used as the chromogen (**ab103723**), diluted 1/100 and incubated for 10min at room temperature. The section was counterstained with haematoxylin and mounted with DPX. The inset negative control image is taken from an identical assay without primary antibody.

For other IHC staining systems (automated and non-automated) customers should optimize variable parameters such as antigen retrieval conditions, primary antibody concentration and antibody incubation times.

*Tissue obtained from the Human Research Tissue Bank, supported by the NIHR Cambridge Biomedical Research Centre



Western blot - Donkey Anti-Mouse IgG H&L (HRP) (ab205724)

All lanes : No Primary Antibody

Lane 1 : Liver (Human) Tissue Lysate

Lane 2 : Liver (Mouse) Tissue Lysate

Lane 3 : Liver (Rat) Tissue Lysate

Lane 4 : HeLa (Human epithelial carcinoma cell line) Whole Cell Lysate

Lane 5 : NIH 3T3 (Mouse embryonic fibroblast cell line) Whole Cell Lysate

Lane 6 : PC12 (Rat adrenal pheochromocytoma cell line) Whole Cell Lysate

Lysates/proteins at 10 µg per lane.

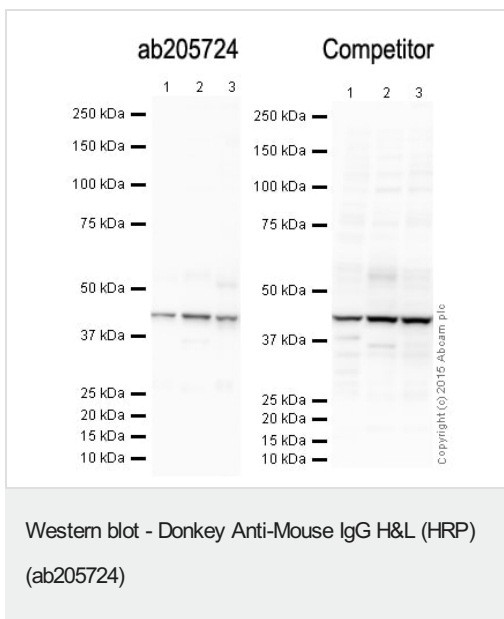
Secondary

All lanes : Donkey Anti-Mouse IgG H&L (HRP) (ab205724) at 1/2000 dilution

Performed under reducing conditions.

Exposure time: 15 seconds

This blot was produced using a 4-12% Bis-tris gel under the MOPS buffer system. The gel was run at 200V for 50 minutes before being transferred onto a Nitrocellulose membrane at 30V for 70 minutes. The membrane was incubated overnight with 2% Bovine Serum Albumin at 4°C. Any non-specific background binding was assessed by incubating the membrane with only the secondary antibody (ab205724), and visualised using ECL development solution [ab133406](#).



All lanes : Anti-beta Actin antibody [mAbcam 8226] - Loading Control ([ab8226](#)) at 1 µg/ml

Lane 1 : Liver (Human) Tissue Lysate

Lane 2 : Liver (Mouse) Tissue Lysate

Lane 3 : Liver (Rat) Tissue Lysate

Lysates/proteins at 10 µg per lane.

Secondary

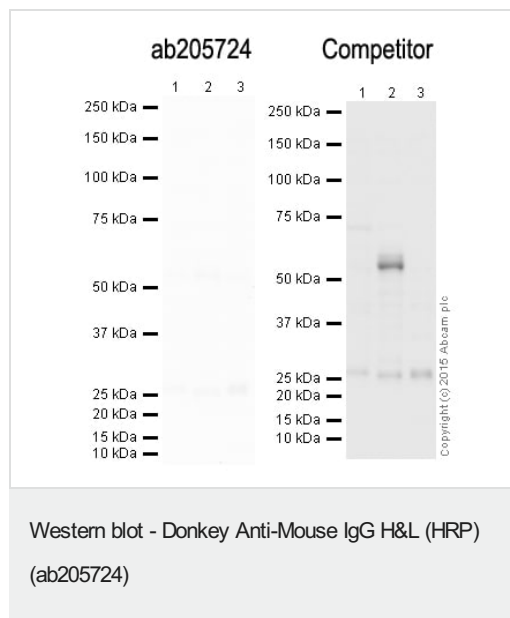
All lanes : ab205724 (Left Image) at 1/2000 and a competitor secondary (Right Image) at 1/2000. Notice the increased background of the competitor product.

Performed under reducing conditions.

Observed band size: 42 kDa

Exposure time: 15 seconds

This blot was produced using a 4-12% Bis-tris gel under the MOPS buffer system. The gel was run at 200V for 50 minutes before being transferred onto a Nitrocellulose membrane at 30V for 70 minutes. The membrane was then blocked for an hour using 2% Bovine Serum Albumin before being incubated with [ab8226](#) overnight at 4°C. Antibody binding was detected using ab205724 (Left Image) and a competitor secondary (Right Image), and visualised using ECL development solution [ab133406](#).



All lanes : No Primary Antibody

Lane 1 : Liver (Human) Tissue Lysate

Lane 2 : Liver (Mouse) Tissue Lysate

Lane 3 : Liver (Rat) Tissue Lysate

Lysates/proteins at 10 µg per lane.

Secondary

All lanes : ab205724 (Left Image) 1/2000 and a competitor secondary (Right Image) 1/2000. Notice the increased background of the competitor product.

Performed under reducing conditions.

Exposure time: 15 seconds

This blot was produced using a 4-12% Bis-tris gel under the MOPS buffer system. The gel was run at 200V for 50 minutes before being transferred onto a Nitrocellulose membrane at 30V for 70 minutes. The membrane was incubated overnight with 2% Bovine Serum Albumin at 4°C. Any non-specific background binding was assessed by incubating the membrane with ab205724 (Left Image) and a competitor secondary (Right Image), and visualised using ECL development solution [ab133406](#).

Please note: All products are "FOR RESEARCH USE ONLY. NOT FOR USE IN DIAGNOSTIC PROCEDURES"

Our Abpromise to you: Quality guaranteed and expert technical support

- Replacement or refund for products not performing as stated on the datasheet
- Valid for 12 months from date of delivery
- Response to your inquiry within 24 hours
- We provide support in Chinese, English, French, German, Japanese and Spanish
- Extensive multi-media technical resources to help you
- We investigate all quality concerns to ensure our products perform to the highest standards

If the product does not perform as described on this datasheet, we will offer a refund or replacement. For full details of the Abpromise, please visit <https://www.abcam.cn/abpromise> or contact our technical team.

Terms and conditions

- Guarantee only valid for products bought direct from Abcam or one of our authorized distributors