

Donkey Anti-Goat IgG H&L (Cy5 ®) preadsorbed ab6566

★★★★★ [1 Abreviews](#) [40 References](#) [2 图像](#)

概述

产品名称	驴抗山羊IgG H&L (Cy5 ®)预吸附二抗
宿主	Donkey
靶标种属	Goat
经测试应用	适用于: ICC, Flow Cyt, ICC/IF, IHC-P, IHC-Fr, WB, ELISA
最小交叉反应	Chicken, Guinea pig, Hamster, Horse, Mouse, Rabbit, Rat more details
免疫原	Goat IgG, whole molecule
偶联物	Cy5 ®. Ex: 650nm, Em: 667nm

性能

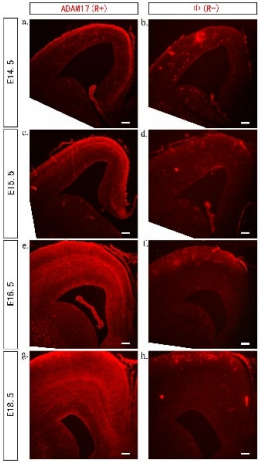
形式	Liquid
存放说明	Shipped at 4°C. Store at +4°C.
存储溶液	pH: 6.50 Preservative: 0.01% Sodium azide Constituents: 0.88% Sodium chloride, 1% BSA, 0.424% Potassium phosphate
纯度	Immunogen affinity purified
纯化说明	This product was prepared from monospecific antiserum by immunoaffinity chromatography using Goat IgG coupled to agarose beads followed by solid phase adsorption(s) to remove any unwanted reactivities and extensive dialysis.
共轭说明	Cy5.29 (Cyanine 5.29-OSu) (Molecular Weight 975 daltons) Absorption Wavelength: 650 nm Emission Wavelength: 667 nm Fluorochrome/Protein Ratio: 6.0 moles Cy5 per mole of Goat IgG
克隆	多克隆
同种型	IgG
常规说明	Cy™ and CyDye™ are registered trademarks of Cytiva. This secondaryantibody is specifically designed for the detection of multiple primary antibodies (polyclonal or monoclonal) of different host species in experiments where cells are simultaneously labeled without unwanted cross reaction.

The Abpromise guarantee Abpromise™承诺保证使用ab6566于以下的经测试应用

“应用说明”部分 下显示的仅为推荐的起始稀释度;实际最佳的稀释度/浓度应由使用者检定。

应用	Ab评论	说明
ICC		Use at an assay dependent concentration.
Flow Cyt		Use at an assay dependent dilution.
ICC/IF		1/1000 - 1/5000.
IHC-P		Use at an assay dependent concentration.
IHC-Fr		Use at an assay dependent concentration.
WB	★★★★★ (1)	Use at an assay dependent dilution.
ELISA		1/10000 - 1/50000.

图片

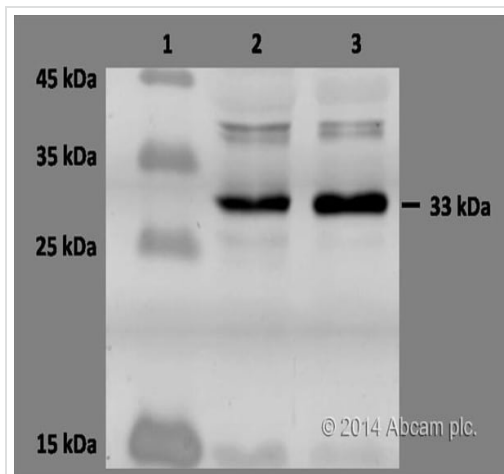


Immunohistochemistry (Frozen sections) - Donkey
Anti-Goat IgG H&L (Cy5 ®) preadsorbed (ab6566)

Li Q et al. ADAM17 is critical for multipolar exit and radial migration of neuronal intermediate progenitor cells in mice cerebral cortex. PLoS One 8:e65703 (2013).

Embryonic brains were fixed in 4% paraformaldehyde in PBS overnight and placed in 15% sucrose/PBS for 12 h and then 30% sucrose/PBS for 24 h at 4°C. Brains were then embedded in OCT (optimum cutting temperature) mounting medium and froze before sectioning at 10 or 20 µm. Embryonic cerebral cortex from E14.5, E15.5, E16.5 and E18.5 mice were dissected out and sectioned at 10–15 µm for immunohistochemistry experiment with anti-ADAM17 (ab13535) antibody.

Cy5-labeled donkey anti-goat (ab6566) was used as the secondary antibody (Red).



Western blot - Donkey Anti-Goat IgG H&L (Cy5 ®)
preadsorbed (ab6566)

This image is courtesy of an anonymous Abreview

Lanes 2-3 : Goat anti-UCP1 at 1/200 dilution

Lane 1 : Marker

Lanes 2-3 : Mouse brown adipose tissue lysate at 70 µg

Secondary

Lanes 2-3 : Donkey Anti-Goat IgG H&L (Cy5 ®) preadsorbed
(ab6566) at 1/2500 dilution

Observed band size: 33 kDa

Please note: All products are "FOR RESEARCH USE ONLY. NOT FOR USE IN DIAGNOSTIC PROCEDURES"

Our Abpromise to you: Quality guaranteed and expert technical support

- Replacement or refund for products not performing as stated on the datasheet
- Valid for 12 months from date of delivery
- Response to your inquiry within 24 hours
- We provide support in Chinese, English, French, German, Japanese and Spanish
- Extensive multi-media technical resources to help you
- We investigate all quality concerns to ensure our products perform to the highest standards

If the product does not perform as described on this datasheet, we will offer a refund or replacement. For full details of the Abpromise, please visit <https://www.abcam.cn/abpromise> or contact our technical team.

Terms and conditions

- Guarantee only valid for products bought direct from Abcam or one of our authorized distributors