

HeLa Whole Cell RIPA Extract ab170197

2 图像

概述

产品名称	HeLa全细胞RIPA Extract
样品类型	Cell Lysate
产品概述	<p>HeLa cells are an adherent human epithelial cell line derived from a cervical carcinoma. HeLa cells were lysed using radio immunoprecipitation assay (RIPA) buffer supplemented with protease and phosphatase inhibitors, centrifuged and the supernatant collected. Protein concentration of the extract was determined by BCA assay. This products is suitable for sandwich ELISAs, Immunoprecipitation, SDS-PAGE and Western Blotting.</p> <p>Avoid freeze-thaw cycles with this product.</p> <p>Concentration: Each unit contains a minimum of 300 µg at a lot-specific concentration. See label for concentration.</p>
说明	<p>Abcam has not and does not intend to apply for the REACH Authorisation of customers' uses of products that contain European Authorisation list (Annex XIV) substances.</p> <p>It is the responsibility of our customers to check the necessity of application of REACH Authorisation, and any other relevant authorisations, for their intended uses.</p>
经测试应用	适用于: SDS-PAGE, IP, WB, Blocking, Sandwich ELISA

性能

存放说明	Store at -80°C. Please refer to protocols.
------	--

组件	2 units
HeLa Whole Cell RIPA Extract	2 vials

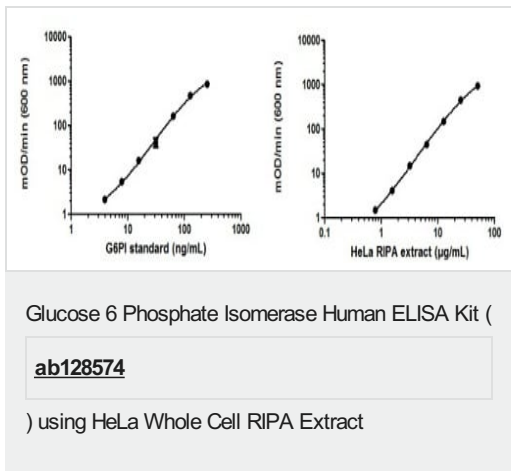
应用

The Abpromise guarantee **Abpromise™**承诺保证使用ab170197于以下的经测试应用

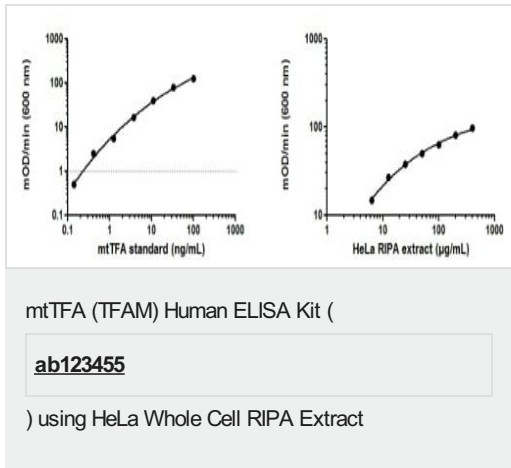
“应用说明”部分 下显示的仅为推荐的起始稀释度;实际最佳的稀释度/浓度应由使用者检定。

应用	Ab评论	说明
SDS-PAGE		Use at an assay dependent concentration.
IP		Use at an assay dependent concentration.
WB		Use at an assay dependent concentration.
Blocking		Use at an assay dependent concentration.
Sandwich ELISA		Use at an assay dependent concentration.

图片



Glucose 6 Phosphate Isomerase (G6PI) protein was assayed in HeLa Whole Cell RIPA Extract (ab170197) in triplicate using Glucose 6 Phosphate Isomerase Human ELISA Kit (**ab128574**). A standard curve generated using the G6PI standard protein is shown (left image). G6PI signal using 2-fold serial dilutions of ab170197 starting at 50 $\mu\text{g/mL}$ (right image). The G6PI concentration in the HeLa Whole Cell RIPA Extract was interpolated to be 24.9 $\mu\text{g/mL}$.



Mitochondrial Transcription Factor A (mtTFA) protein was assayed in HeLa Whole Cell RIPA Extract (ab170197) in triplicate using mtTFA (TFAM) Human ELISA Kit (**ab123455**). A standard curve generated using the mtTFA standard protein is shown (left panel). mtTFA signal using 2-fold serial dilutions of ab170197 starting at 400 $\mu\text{g/mL}$ is shown (right panel). The mtTFA concentration in the HeLa Whole Cell RIPA Extract was interpolated to be 841 ng/mL .

Please note: All products are "FOR RESEARCH USE ONLY. NOT FOR USE IN DIAGNOSTIC PROCEDURES"

Our Abpromise to you: Quality guaranteed and expert technical support

- Replacement or refund for products not performing as stated on the datasheet
- Valid for 12 months from date of delivery
- Response to your inquiry within 24 hours

- We provide support in Chinese, English, French, German, Japanese and Spanish
- Extensive multi-media technical resources to help you
- We investigate all quality concerns to ensure our products perform to the highest standards

If the product does not perform as described on this datasheet, we will offer a refund or replacement. For full details of the Abpromise, please visit <https://www.abcam.cn/abpromise> or contact our technical team.

Terms and conditions

- Guarantee only valid for products bought direct from Abcam or one of our authorized distributors