

# HeLa Signaling Cascade Whole Cell Lysate Set: PMA-Treated and Vehicle-Treated Control ab170195

2 图像

概述

|       |  |
|-------|--|
| 产品名称  | HeLa Signaling Cascade全细胞裂解物Set: PMA-Treated and Vehicle-Treated Control   |
| 产品概述  | <p>HeLa cells are an adherent human epithelial cell line derived from a cervical carcinoma. HeLa cells were lysed with 1% SDS in the prescence of protease and phosphatase inhibitors. Protein concentration of the extract was determined by BCA assay. The extract is suitable for use in SDS-PAGE and Western blotting.</p> <p>PMA-treated HeLa lysate is designed for use as a western blot positive control when studying signaling cascades downstream of PKC. Cells were treated with 200 nM PMA for 1 hour after overnight serum starvation. Untreated cells were grown under the same conditions and treated instead with DMSO (PMA diluent as used to generate the treated lysate).</p> <p>Concentration: HeLa PMA-treated lysate, 200 µg at 2.0 mg/mL<br/>HeLa DMSO-treated lysate, 200 µg at 2.0 mg/mL</p> |
| 说明    | <p>PMA (phorbol 12-myristate 13-acetate) also known as TPA (12-O-Tetradecanoylphorbol 13-acetate), is a potent activator of protein kinase C (PKC), a calcium-activated, phospholipid- and diacylglycerol (DAG)-dependent serine/threonine-protein kinase. PKC is involved in positive and negative regulation of cell proliferation, apoptosis, differentiation, migration and adhesion, tumorigenesis, cardiac hypertrophy, angiogenesis, platelet function and inflammation, by directly phosphorylating targets such as RAF1, BCL2, CSPG4, TNNT2/CTNT, or activating signaling cascade involving MAPK1/3 (ERK1/2) and RAP1GAP.</p>   |
| 经测试应用 | 适用于: SDS-PAGE, WB  |

性能

存放说明 Store at -80°C. Please refer to protocols.

| 组件                                  | 2 units   |
|-------------------------------------|-----------|
| Control for PMA-Treated HeLa Lysate | 1 x 200µg |
|                                     |           |

| 组件                      | 2 units   |
|-------------------------|-----------|
| PMA-Treated HeLa Lysate | 1 x 200µg |

## 应用

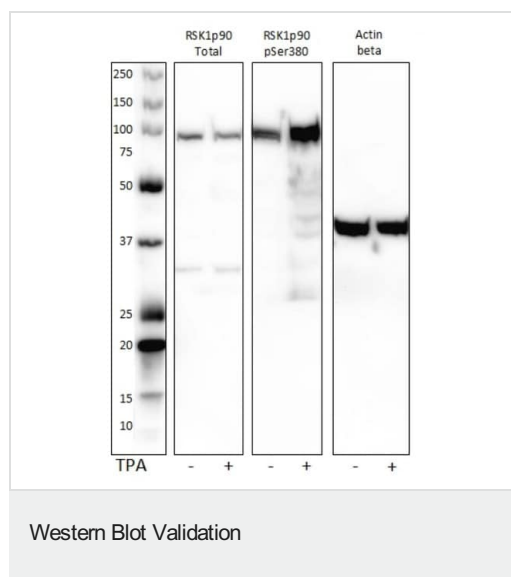
### The Abpromise guarantee

**Abpromise™** 承诺保证使用 ab170195 于以下的经测试应用

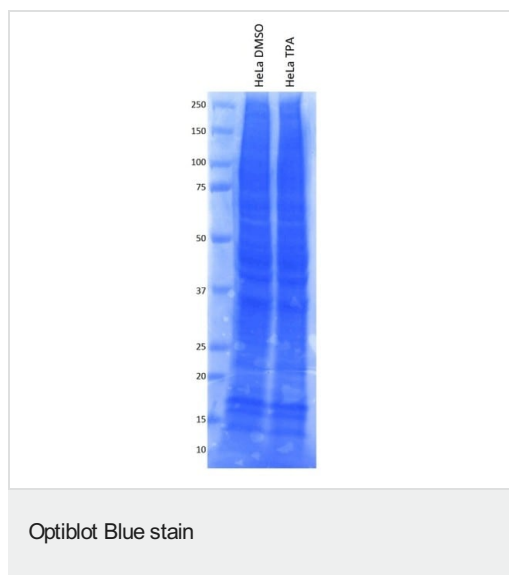
“应用说明”部分 下显示的仅为推荐的起始稀释度;实际最佳的稀释度/浓度应由使用者检定。

| 应用              | Ab 评论 | 说明  |
|-----------------|-------|---|
| <b>SDS-PAGE</b> |       | Use at an assay dependent concentration.<br>Load 20 µg – 40 µg per lane<br>Heat sample at 70°C before loading |
| <b>WB</b>       |       | Use at an assay dependent concentration.<br>Load 20 µg – 40 µg per lane<br>Heat sample at 70°C before loading |

## 图片



HeLa cell cultures were serum-starved overnight and treated with 200nM of PMA for 1 hour at 37°C. 40µg of cell lysate was run on a 4-20% gradient gel then transferred to a PVDF membrane. All blocking and antibody incubation steps were done in 5% milk, 20 mM Tris-HCl, 0.1% TWEEN-20. Primary antibodies: RSK1p90 total: 1:1000 **ab32114** RSK1p90 pSer380: 1:500 **ab32203** Actin beta: 1µg/mL **ab8226** Secondary antibodies: Goat polyclonal to Mouse IgG – H&L – Pre-Adsorbed (HRP) at 1/10000. Goat polyclonal to Rabbit IgG – H&L – Pre-Adsorbed (HRP) at 1/10000.



Optiblot Blue stain HeLa cell cultures were serum-starved overnight and treated with 200 nM of PMA for 1 hour at 37°C. 40 µg of cell lysate was run on a 4-20% gradient gel then stained with Optiblot Blue ([ab119211](#)) for 2 hours at room temperature. Gel was destained using nanopure water for 24 hours.

**Please note:** All products are "FOR RESEARCH USE ONLY. NOT FOR USE IN DIAGNOSTIC PROCEDURES"

### Our Abpromise to you: Quality guaranteed and expert technical support

---

- Replacement or refund for products not performing as stated on the datasheet
- Valid for 12 months from date of delivery
- Response to your inquiry within 24 hours
- We provide support in Chinese, English, French, German, Japanese and Spanish
- Extensive multi-media technical resources to help you
- We investigate all quality concerns to ensure our products perform to the highest standards

If the product does not perform as described on this datasheet, we will offer a refund or replacement. For full details of the Abpromise, please visit <https://www.abcam.cn/abpromise> or contact our technical team.

### Terms and conditions

---

- Guarantee only valid for products bought direct from Abcam or one of our authorized distributors