

# Recombinant rhesus monkey CD40 protein (Fc Chimera) ab208480

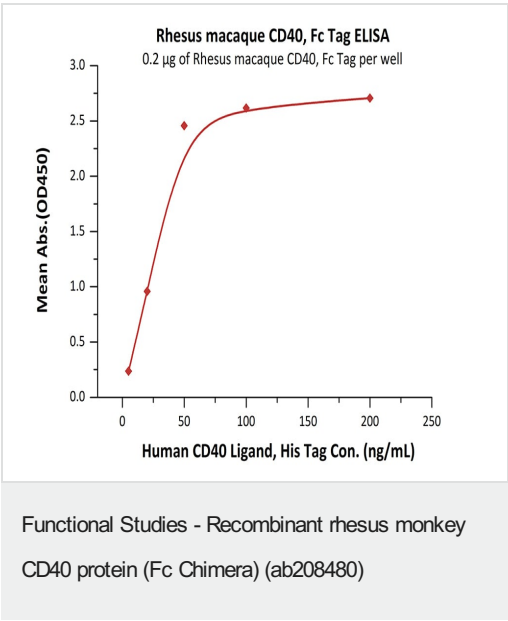
2 图像

描述	
产品名称	重组恒河猴CD40蛋白(Fc Chimera)
生物活性	Measured by its binding ability in a functional ELISA. Immobilized ab208480 at 2µg/mL (100 µl/well), can bind Recombinant Human CD40LG /CD40 Ligand Protein with a linear of 5-50 ng/mL.
纯度	> 95 % SDS-PAGE.
内毒素水平	< 1.000 Eu/µg
表达系统	HEK 293 cells
Accession	<b><u>H9ZFM8</u></b>
蛋白长度	Protein fragment
无动物成分	No
性质	Recombinant
种属	Rhesus monkey
序列	EPPTACREKQYLINSQCCSLCQPGQKLVS DCTEFTETECLPC SESEFLDT WNRETRCHQHKYCDPNLGLRVQQKGTSETDTICTCEEGLHCM SESCESC PHRSCLPGFGVKQIATGVSDTICEPCPVGFFSNVSSAFEKCR PWTSCETK DLVVQQAGTNKTDVVCGPQDRQR
预测分子量	46 kDa including tags
氨基酸	21 to 193
额外的序列信息	Chimera fused with a Human IgG1 Fc tag at the C-terminus (NP_001252791.1).

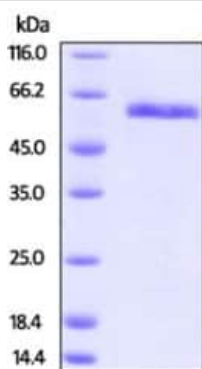
技术指标	
Our <b>Abpromise guarantee</b> covers the use of <b>ab208480</b> in the following tested applications.	
The application notes include recommended starting dilutions; optimal dilutions/concentrations should be determined by the end user.	
应用	Functional Studies
	SDS-PAGE

形式	Lyophilized
制备和贮存	
稳定性和存储	<p>Shipped at 4°C. Store at -80°C.</p> <p>pH: 7.40</p> <p>Constituents: 0.61% Tris, 0.75% Glycine, 5% Trehalose, 0.44% L-Arginine, 0.87% Sodium chloride</p> <p>Note: 5-10% trehalose is commonly used for freeze drying, and after reconstitution, the trehalose is mostly about 3-5%.</p> <p>This product is an active protein and may elicit a biological response in vivo, handle with caution.</p>
复溶	Reconstitute with sterile deionized water to a concentration of 250 µg/ml.
常规信息	
功能	Receptor for TNFSF5/CD40LG.
组织特异性	B-cells and in primary carcinomas.
疾病相关	Defects in CD40 are the cause of hyper-IgM immunodeficiency syndrome type 3 (HIGM3) [MIM:606843]; also known as hyper-IgM syndrome 3. HIGM3 is an autosomal recessive disorder which includes an inability of B cells to undergo isotype switching, one of the final differentiation steps in the humoral immune system, an inability to mount an antibody-specific immune response, and a lack of germinal center formation.
序列相似性	Contains 4 TNFR-Cys repeats.
细胞定位	Secreted and Cell membrane.

图片



Immobilized Rhesus macaque CD40, Fc Tag at 2 µg/mL (100 µL/well) can bind Human CD40 Ligand, His Tag with a linear range of 5-50 ng/mL.



SDS-PAGE - Recombinant rhesus monkey CD40 protein (Fc Chimera) (ab208480)

SDS-PAGE analysis of reduced ab208480 stained overnight with Coomassie Blue.

Note: DTT-reduced Protein migrates as 56 kDa in SDS-PAGE.

**Please note:** All products are "FOR RESEARCH USE ONLY. NOT FOR USE IN DIAGNOSTIC PROCEDURES"

### Our Abpromise to you: Quality guaranteed and expert technical support

---

- Replacement or refund for products not performing as stated on the datasheet
- Valid for 12 months from date of delivery
- Response to your inquiry within 24 hours
- We provide support in Chinese, English, French, German, Japanese and Spanish
- Extensive multi-media technical resources to help you
- We investigate all quality concerns to ensure our products perform to the highest standards

If the product does not perform as described on this datasheet, we will offer a refund or replacement. For full details of the Abpromise, please visit <https://www.abcam.cn/abpromise> or contact our technical team.

### Terms and conditions

---

- Guarantee only valid for products bought direct from Abcam or one of our authorized distributors