

Recombinant rat IL-17A protein (Active) ab282393

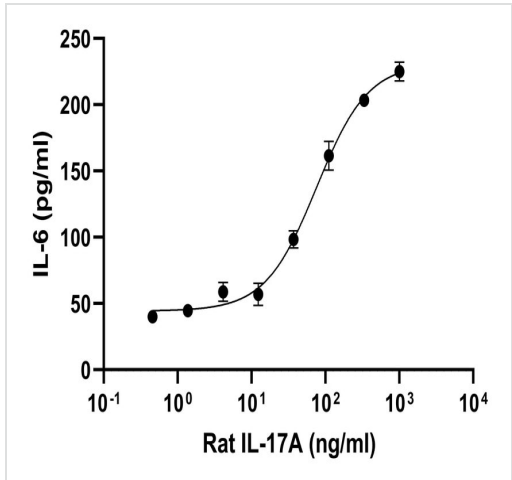
5 图像

描述	
产品名称	重组大鼠IL-17A蛋白(Active)
生物活性	Fully biologically active determined by the dose dependent induction of IL-6 secretion in NIH-3T3 cells. ED50 for this effect is ≤ 75.83 ng/ml, corresponding to specific activity of 1.32 X 10 ⁴ units/mg.
纯度	≥ 95 % SDS-PAGE. =95% by HPLC
内毒素水平	≤0.005 Eu/μg
表达系统	HEK 293 cells
Accession	<u>Q61453</u>
蛋白长度	Full length protein
无动物成分	Yes
无载体	是
性质	Recombinant
种属	Rat
序列	AVLIPQSSVCPNAEANNFLQNVKVNLLKVINSLSSKASSRRPS DYLNRSTS PWTLSRNEDPDRYPSVIWEAQCRHQRCVNAEGKLDHHMNSVL IQQEILVL KREPEKCPFTFRVEKMLVGVGCTCVSSIVRHAS
预测分子量	15 kDa
氨基酸	18 to 150
额外的序列信息	N-terminal glycine
描述	重组大鼠IL-17A蛋白

技术指标	
Our Abpromise guarantee covers the use of ab282393 in the following tested applications.	
The application notes include recommended starting dilutions; optimal dilutions/concentrations should be determined by the end user.	
应用	HPLC Mass Spectrometry SDS-PAGE

	Functional Studies
	Sandwich ELISA
	Cell Culture
形式	Lyophilized
制备和贮存	
稳定性和存储	<p>Shipped at Room Temperature. Store at Room Temperature.</p> <p>pH: 7.4</p> <p>Constituents: 0.727% Dibasic monohydrogen potassium phosphate, 0.428% Monobasic dihydrogen potassium phosphate, 10.26% Trehalose</p> <p>This product is an active protein and may elicit a biological response in vivo, handle with caution.</p>
复溶	<p>Store lyophilized form at room temperature. Reconstitute in PBS, aliquot and store at -80°C for 12 months or +4°C for 1 week. Avoid repeated freeze-thaw. Lyophilized contents may appear as either a translucent film or a white powder. This variance does not affect the quality of the product.</p>
常规信息	
功能	Induces stromal cells to produce proinflammatory and hematopoietic cytokines. Enhances the surface expression of the intracellular adhesion molecule-1 (ICAM-1) in fibroblasts.
组织特异性	Restricted to activated memory T-cells.
序列相似性	Belongs to the IL-17 family.
翻译后修饰	Found both in glycosylated and nonglycosylated forms.
细胞定位	Secreted.

图片



Functional Studies - Recombinant rat IL-17A protein (Active) (ab282393)

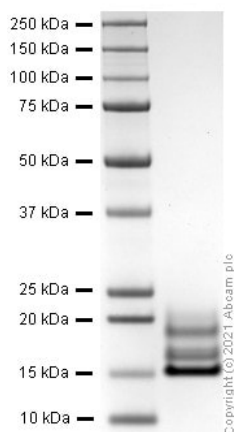
Functional analysis of ab282393.

Fully biologically active determined by the dose dependent induction of IL-6 secretion in NIH-3T3 cells.

ED50 for this effect is ≤ 75.83 ng/ml, corresponding to specific activity of 1.32×10^4 units/mg.

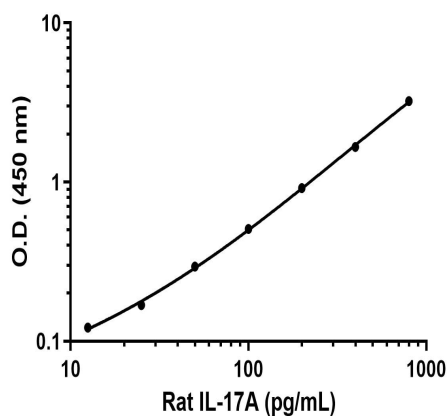
Cell based assay testing is performed on the first lot of protein only and is provided as a reference for protein activity; subsequent lots of protein must pass all biophysical quality control parameters that meet the same parameters as the first lot.

Lot: GR3393274-4



SDS-PAGE - Recombinant rat IL-17A protein
(Active) (ab282393)

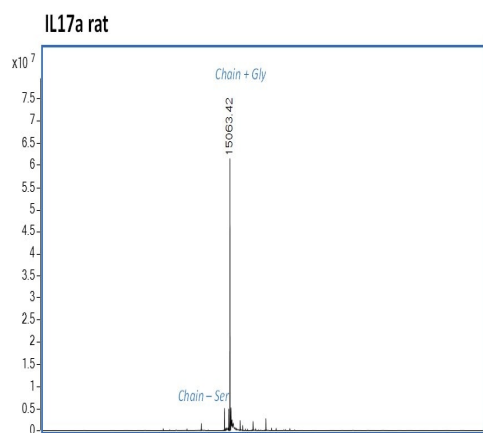
SDS-page analysis of ab282393.



Sandwich ELISA - Recombinant rat IL-17A protein
(Active) (ab282393)

Sandwich ELISA - Recombinant rat IL-17A protein standard curve.

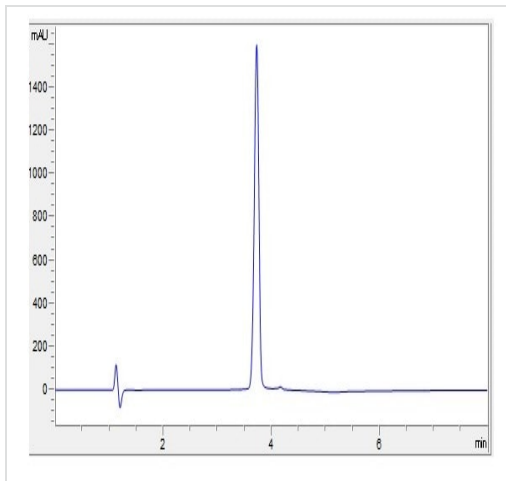
Background subtracted standard curve using Rat IL-17A Antibody Pair - BSA and Azide free (**ab242039**) and Recombinant rat IL-17A protein (Active) (ab282393) in sandwich ELISA. The ELISA was performed using the components of the corresponding SimpleStep® kit, which uses the same antibody pair with a different formulation and format.



Mass Spectrometry - Recombinant rat IL-17A
protein (Active) (ab282393)

Mass determination by ESI-TOF.

Predicted MW is 15062.23 Da (+/- 10 Da by ESI-TOF). Observed MW is 15063.42.



HPLC analysis of ab282393.

HPLC - Recombinant rat IL-17A protein (Active)
(ab282393)

Please note: All products are "FOR RESEARCH USE ONLY. NOT FOR USE IN DIAGNOSTIC PROCEDURES"

Our Abpromise to you: Quality guaranteed and expert technical support

- Replacement or refund for products not performing as stated on the datasheet
- Valid for 12 months from date of delivery
- Response to your inquiry within 24 hours
- We provide support in Chinese, English, French, German, Japanese and Spanish
- Extensive multi-media technical resources to help you
- We investigate all quality concerns to ensure our products perform to the highest standards

If the product does not perform as described on this datasheet, we will offer a refund or replacement. For full details of the Abpromise, please visit <https://www.abcam.cn/abpromise> or contact our technical team.

Terms and conditions

- Guarantee only valid for products bought direct from Abcam or one of our authorized distributors