

## Product datasheet

# Recombinant Mouse Von Willebrand Factor protein (Tagged) ab236205

### 1 图像

#### 描述

产品名称	重组小鼠Von Willebrand Factor蛋白(Tagged)
纯度	> 85 % SDS-PAGE.
表达系统	Escherichia coli
Accession	<u><a href="#">Q8CIZ8</a></u>
蛋白长度	Protein fragment
无动物成分	No
性质	Recombinant
种属	Mouse
序列	DVVFVLEGSDEVGEANFNKSKEFVEEVIQRMDVSPDATRISV LQYSYTVT MEYAFNGAQSKEEVLRHVREIRYQGGNRTNTGQALQYLSEHS FSPSQGDR VEAPNLVYMTGNPASDEIKRLPGDIQVVPIGVGPHANMQEL ERISRPIA PIFIRDFETLPREAPDLV
预测分子量	24 kDa including tags
氨基酸	1498 to 1665
标签	His tag N-Terminus
额外的序列信息	N-terminal 10xHis-tag and C-terminal Myc-tag.

#### 技术指标

Our **Abpromise guarantee** covers the use of **ab236205** in the following tested applications.

The application notes include recommended starting dilutions; optimal dilutions/concentrations should be determined by the end user.

应用	SDS-PAGE
形式	Liquid

#### 制备和贮存

**稳定性和存储**

Shipped at 4°C. Store at -20°C or -80°C. Avoid freeze / thaw cycle.

pH: 7.2

Constituents: Tris buffer, 50% Glycerol (glycerin, glycerine)

**常规信息**

---

**功能**

Important in the maintenance of hemostasis, it promotes adhesion of platelets to the sites of vascular injury by forming a molecular bridge between sub-endothelial collagen matrix and platelet-surface receptor complex GPIb-IX-V. Also acts as a chaperone for coagulation factor VIII, delivering it to the site of injury, stabilizing its heterodimeric structure and protecting it from premature clearance from plasma.

**组织特异性**

Plasma.

**疾病相关**

Defects in VWF are the cause of von Willebrand disease (VWD) [MIM:277480]. VWD defines a group of hemorrhagic disorders in which the von Willebrand factor is either quantitatively or qualitatively abnormal resulting in altered platelet function. Symptoms vary depending on severity and disease type but may include prolonged bleeding time, deficiency of factor VIII and impaired platelet adhesion. Type I von Willebrand disease is the most common form and is characterized by partial quantitative plasmatic deficiency of an otherwise structurally and functionally normal Willebrand factor; type II is associated with a qualitative deficiency and functional anomalies of the Willebrand factor; type III is the most severe form and is characterized by total or near-total absence of Willebrand factor in the plasma and cellular compartments, also leading to a profound deficiency of plasmatic factor VIII.

**序列相似性**

Contains 1 CTCK (C-terminal cystine knot-like) domain.

Contains 4 TIL (trypsin inhibitory-like) domains.

Contains 3 VWFA domains.

Contains 3 VWFC domains.

Contains 4 VWFD domains.

**结构域**

The von Willebrand antigen 2 is required for multimerization of VWF and for its targeting to storage granules.

**翻译后修饰**

All cysteine residues are involved in intrachain or interchain disulfide bonds.

N- and O-glycosylated.

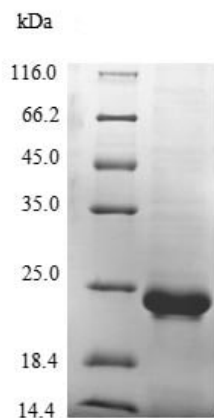
**细胞定位**

Secreted. Secreted > extracellular space > extracellular matrix. Localized to storage granules.

---

**图片**

---



(Tris-Glycine gel) Discontinuous SDS-PAGE (reduced) with 5% enrichment gel and 15% separation gel analysis of ab236205.

SDS-PAGE - Recombinant Mouse Von Willebrand Factor protein (Tagged) (ab236205)

**Please note:** All products are "FOR RESEARCH USE ONLY. NOT FOR USE IN DIAGNOSTIC PROCEDURES"

### Our Abpromise to you: Quality guaranteed and expert technical support

---

- Replacement or refund for products not performing as stated on the datasheet
- Valid for 12 months from date of delivery
- Response to your inquiry within 24 hours
- We provide support in Chinese, English, French, German, Japanese and Spanish
- Extensive multi-media technical resources to help you
- We investigate all quality concerns to ensure our products perform to the highest standards

If the product does not perform as described on this datasheet, we will offer a refund or replacement. For full details of the Abpromise, please visit <https://www.abcam.cn/abpromise> or contact our technical team.

### Terms and conditions

---

- Guarantee only valid for products bought direct from Abcam or one of our authorized distributors