

Product datasheet

Recombinant Mouse Kallikrein 8/KLK8 protein (His tag) ab223010

1 图像

描述

产品名称	重组小鼠Kallikrein 8/KLK8蛋白(His tag)
纯度	> 95 % SDS-PAGE. Affinity purified
内毒素水平	< 1.000 Eu/μg
表达系统	Baculovirus infected insect cells
Accession	Q61955
蛋白长度	Full length protein
无动物成分	No
性质	Recombinant
种属	Mouse
序列	QGSKILEGRECI PHSQPWQAALFQGERLICGGVLVGDRAWLT AAHCKKQK YSVRLGDHSLQSRDQPEQEIQVAQSIQHPCYNNSPEDHSHD IMLIRLQN SANLGDVKVPVQLANLCPKVGQKCIISGWGTVTSPQENFPNT LNCAEVKI YSQNK CERAYPGKITEGMVCAGSSNGADTCQGDSSGGLVCDG MLQGITSW GSDPCGKPEKPGVYTKICRYTTWIKKTMDNRDLEHHHHHH
预测分子量	27 kDa including tags
氨基酸	29 to 260
标签	His tag C-Terminus
额外的序列信息	Full-length protein lacking the signal peptide.

技术指标

Our **Abpromise guarantee** covers the use of **ab223010** in the following tested applications.

The application notes include recommended starting dilutions; optimal dilutions/concentrations should be determined by the end user.

应用	SDS-PAGE
形式	Liquid

补充说明

This product was previously labelled as Kallikrein 8

制备和贮存

稳定性和存储

Shipped at 4°C. Store at +4°C short term (1-2 weeks). Upon delivery aliquot. Store at -20°C long term. Avoid freeze / thaw cycle.

pH: 7.40

Constituents: PBS, 10% Glycerol (glycerin, glycerine)

常规信息

功能

Serine protease which is capable of degrading a number of proteins such as casein, fibrinogen, kininogen, fibronectin and collagen type IV. Also cleaves L1CAM in response to increased neural activity. Induces neurite outgrowth and fasciculation of cultured hippocampal neurons. Plays a role in the formation and maturation of orphan and small synaptic boutons in the Schaffer-collateral pathway, regulates Schaffer-collateral long-term potentiation in the hippocampus and is required for memory acquisition and synaptic plasticity. Involved in skin desquamation and keratinocyte proliferation. Plays a role in the secondary phase of pathogenesis following spinal cord injury.

组织特异性

Isoform 1 is predominantly expressed in the pancreas. Isoform 2 is expressed in adult brain and hippocampus. Isoform 1 and isoform 2 are found in fetal brain and placenta. Detected in salivary gland, uterus, thymus, breast, testis and kidney but not in spleen, liver, lung or normal ovarian tissue. Displays an 11.5-fold increase in Alzheimer disease hippocampus compared to controls and is overexpressed in some ovarian carcinomas. Expressed at low levels in normal skin while high levels are found in psoriasis vulgaris, seborrheic keratosis, lichen planus and squamous cell carcinoma skin samples. Expressed in the keratinocytes.

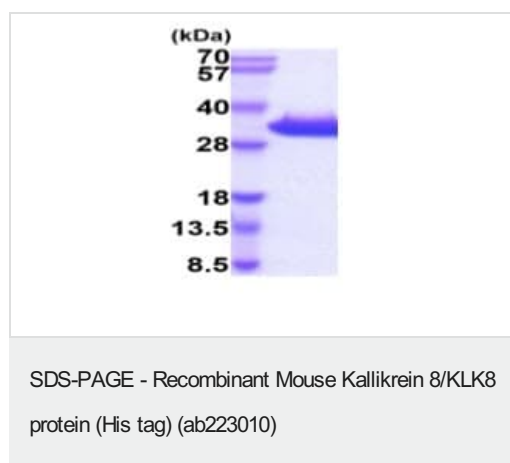
序列相似性

Belongs to the peptidase S1 family. Kallikrein subfamily.
Contains 1 peptidase S1 domain.

细胞定位

Secreted. Cytoplasm. Shows a cytoplasmic distribution in the keratinocytes.

图片



3 µg ab223010 analysed by 15% SDS-PAGE.

Our Abpromise to you: Quality guaranteed and expert technical support

- Replacement or refund for products not performing as stated on the datasheet
- Valid for 12 months from date of delivery
- Response to your inquiry within 24 hours

- We provide support in Chinese, English, French, German, Japanese and Spanish
- Extensive multi-media technical resources to help you
- We investigate all quality concerns to ensure our products perform to the highest standards

If the product does not perform as described on this datasheet, we will offer a refund or replacement. For full details of the Abpromise, please visit <https://www.abcam.cn/abpromise> or contact our technical team.

Terms and conditions

- Guarantee only valid for products bought direct from Abcam or one of our authorized distributors