

Recombinant mouse Aurora A protein ab60327

4 图像

描述

产品名称	重组小鼠Aurora A蛋白
生物活性	Specific activity: 69 nmol/min/mg.
纯度	> 90 % SDS-PAGE. Purity: >90% as determined by densitometry. Affinity purified.
表达系统	Baculovirus infected Sf9 cells
Accession	<u>P97477</u>
蛋白长度	Full length protein
无动物成分	No
性质	Recombinant
种属	Mouse

技术指标

Our **Abpromise guarantee** covers the use of **ab60327** in the following tested applications.

The application notes include recommended starting dilutions; optimal dilutions/concentrations should be determined by the end user.

应用	SDS-PAGE Functional Studies
形式	Liquid
补充说明	<u>ab64311</u> (Myelin Basic Protein protein) can be utilized as a substrate for assessing kinase activity

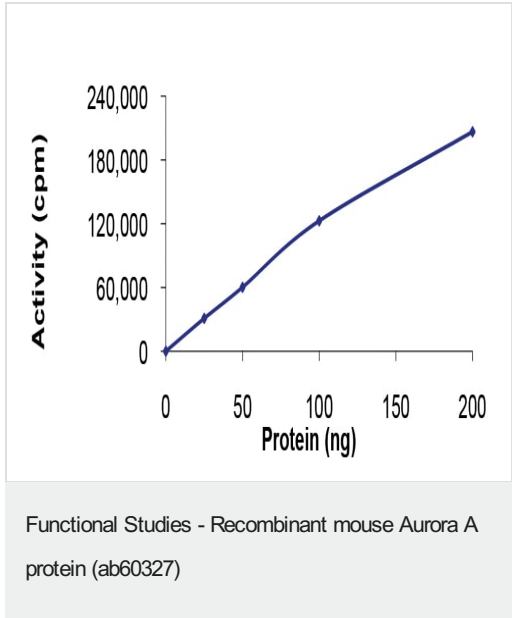
制备和贮存

稳定性和存储	Shipped on dry ice. Upon delivery aliquot and store at -80°C. Avoid freeze / thaw cycles. pH: 7.50 Constituents: 0.0038% EGTA, 0.00174% PMSF, 0.00385% DTT, 0.79% Tris HCl, 0.00292% EDTA, 25% Glycerol (glycerin, glycerine), 0.87% Sodium chloride This product is an active protein and may elicit a biological response in vivo, handle with caution.
--------	--------------------------------------------------------------------------------------------------------------------------------------------------------------------------------------------------------------------------------------------------------------------------------------------------------------------------------------------------------------------

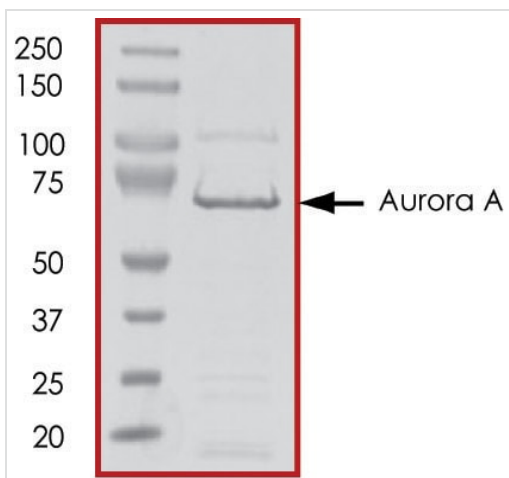
常规信息

功能	Contributes to the regulation of cell cycle progression. Required for normal mitosis. Associates with the centrosome and the spindle microtubules during mitosis and functions in centrosome maturation, spindle assembly, maintenance of spindle bipolarity, centrosome separation and mitotic checkpoint control. Phosphorylates numerous target proteins, including ARHGEF2, BRCA1, KIF2A, NDEL1, PARD3, PLK1 and BORA. Regulates KIF2A tubulin depolymerase activity (By similarity). Required for normal axon formation. Plays a role in microtubule remodeling during neurite extension. Important for microtubule formation and/or stabilization.
组织特异性	Highly expressed in testis and weakly in skeletal muscle, thymus and spleen. Also highly expressed in colon, ovarian, prostate, neuroblastoma, breast and cervical cancer cell lines.
序列相似性	Belongs to the protein kinase superfamily. Ser/Thr protein kinase family. Aurora subfamily. Contains 1 protein kinase domain.
翻译后修饰	Activated by phosphorylation at Thr-288; this brings about a change in the conformation of the activation segment. Phosphorylation at Thr-288 varies during the cell cycle and is highest during M phase. Autophosphorylated at Thr-288 upon TPX2 binding. Phosphorylated upon DNA damage, probably by ATM or ATR. Ubiquitinated by CHFR, leading to its degradation by the proteasome (By similarity). Ubiquitinated by the anaphase-promoting complex (APC), leading to its degradation by the proteasome.
细胞定位	Cytoplasm > cytoskeleton > centrosome. Cytoplasm > cytoskeleton > spindle pole. Detected at the neurite hillock in developing neurons (By similarity). Localizes on centrosomes in interphase cells and at each spindle pole in mitosis.

图片

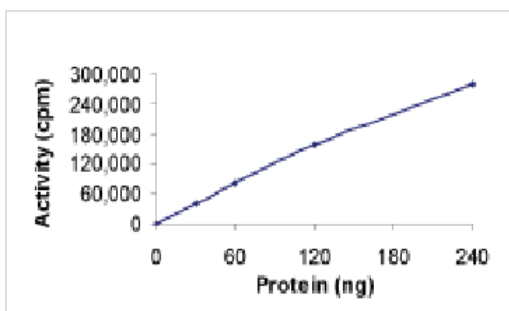


The specific activity of Aurora A (ab60327) was determined to be 78 nmol/min/mg as per activity assay protocol



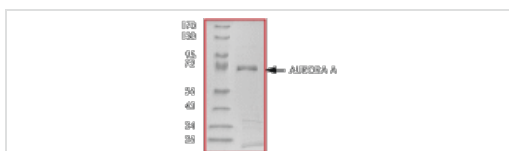
SDS PAGE analysis of ab60327

SDS-PAGE - Recombinant mouse Aurora A protein
(ab60327)



Sample Kinase Activity Plot.

Functional Studies - Recombinant mouse Aurora A
protein (ab60327)



ab60327 on SDS-PAGE, MW ~71kDa.

SDS-PAGE - Recombinant mouse Aurora A protein
(ab60327)

Please note: All products are "FOR RESEARCH USE ONLY. NOT FOR USE IN DIAGNOSTIC PROCEDURES"

Our Abpromise to you: Quality guaranteed and expert technical support

- Replacement or refund for products not performing as stated on the datasheet

- Valid for 12 months from date of delivery
- Response to your inquiry within 24 hours
- We provide support in Chinese, English, French, German, Japanese and Spanish
- Extensive multi-media technical resources to help you
- We investigate all quality concerns to ensure our products perform to the highest standards

If the product does not perform as described on this datasheet, we will offer a refund or replacement. For full details of the Abpromise, please visit <https://www.abcam.cn/abpromise> or contact our technical team.

Terms and conditions

- Guarantee only valid for products bought direct from Abcam or one of our authorized distributors