

Recombinant Human TRPM7 protein ab153385

1 图像

描述	
产品名称	重组人TRPM7蛋白
表达系统	Wheat germ
蛋白长度	Protein fragment
无动物成分	No
性质	Recombinant
种属	Human
序列	KTKAEMSHIPQSQDAHQMTMDDSENNFQNITEEIPMEVFKEV RILDSNEG KNEMEIQMKSKKLPITRKFYAFYHAPIVK
氨基酸	777 to 855
标签	GST tag N-Terminus

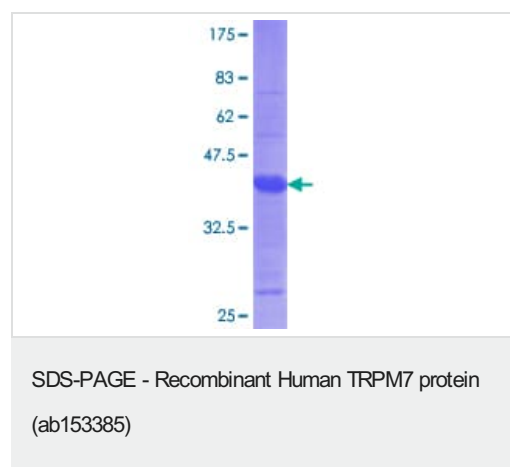
技术指标	
Our Abpromise guarantee covers the use of ab153385 in the following tested applications.	
The application notes include recommended starting dilutions; optimal dilutions/concentrations should be determined by the end user.	
应用	Western blot ELISA
形式	Liquid
补充说明	

制备和贮存	
稳定性和存储	Shipped on dry ice. Upon delivery aliquot and store at -80°C. Avoid freeze / thaw cycles. pH: 8.00 Constituents: 0.31% Glutathione, 0.79% Tris HCl

常规信息	
------	--

功能	Essential ion channel and serine/threonine-protein kinase. Divalent cation channel permeable to calcium and magnesium. Has a central role in magnesium ion homeostasis and in the regulation of anoxic neuronal cell death. The kinase activity is essential for the channel function. May be involved in a fundamental process that adjusts plasma membrane divalent cation fluxes according to the metabolic state of the cell. Phosphorylates annexin A1 (ANXA1).
疾病相关	Defects in TRPM7 are a cause of susceptibility to amyotrophic lateral sclerosis-parkinsonism/dementia complex type 1 (ALS-PDC1) [MIM:105500]; also called amyotrophic lateral sclerosis-parkinsonism/dementia complex of Guam or Guam disease. Amyotrophic lateral sclerosis-parkinsonism/dementia complex type 1 is a neurodegenerative disorder characterized by chronic, progressive and uniformly fatal amyotrophic lateral sclerosis and parkinsonism-dementia. Both diseases are known to occur in the same kindred, the same sibship and even the same individual.
序列相似性	In the C-terminal section; belongs to the protein kinase superfamily. Alpha-type protein kinase family. ALPK subfamily. In the N-terminal section; belongs to the transient receptor (TC 1.A.4) family. LTrpC subfamily. TRPM7 sub-subfamily. Contains 1 alpha-type protein kinase domain.
翻译后修饰	Autophosphorylated.
细胞定位	Membrane.

图片



ab153385 on a 12.5% SDS-PAGE stained with Coomassie Blue.

Please note: All products are "FOR RESEARCH USE ONLY. NOT FOR USE IN DIAGNOSTIC PROCEDURES"

Our Abpromise to you: Quality guaranteed and expert technical support

- Replacement or refund for products not performing as stated on the datasheet
- Valid for 12 months from date of delivery
- Response to your inquiry within 24 hours
- We provide support in Chinese, English, French, German, Japanese and Spanish
- Extensive multi-media technical resources to help you
- We investigate all quality concerns to ensure our products perform to the highest standards

If the product does not perform as described on this datasheet, we will offer a refund or replacement. For full details of the Abpromise, please visit <https://www.abcam.cn/abpromise> or contact our technical team.

Terms and conditions

- Guarantee only valid for products bought direct from Abcam or one of our authorized distributors