

Recombinant Human TRF1 protein ab116406

1 图像

描述	
产品名称	重组人TRF1蛋白
纯度	> 90 % SDS-PAGE.
表达系统	Escherichia coli
Accession	<u>P54274-2</u>
蛋白长度	Full length protein
无动物成分	No
性质	Recombinant
种属	Human
预测分子量	77 kDa including tags
氨基酸	1 to 419

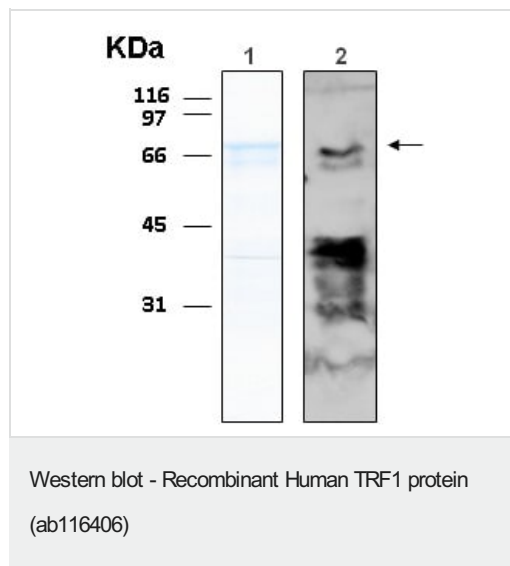
技术指标	
Our <u>Abpromise guarantee</u> covers the use of ab116406 in the following tested applications.	
The application notes include recommended starting dilutions; optimal dilutions/concentrations should be determined by the end user.	
应用	Western blot ELISA SDS-PAGE Mass Spectrometry
质谱法	MALDI-TOF-TOF
形式	Liquid

制备和贮存	
稳定性和存储	Shipped on dry ice. Upon delivery aliquot and store at -80°C. Avoid freeze / thaw cycles. pH: 7.40 Constituent: 99% PBS

常规信息

功能	Binds the telomeric double-stranded TTAGGG repeat and negatively regulates telomere length. Involved in the regulation of the mitotic spindle. Component of the shelterin complex (telosome) that is involved in the regulation of telomere length and protection. Shelterin associates with arrays of double-stranded TTAGGG repeats added by telomerase and protects chromosome ends; without its protective activity, telomeres are no longer hidden from the DNA damage surveillance and chromosome ends are inappropriately processed by DNA repair pathways.
组织特异性	Highly expressed and ubiquitous. Isoform Pin2 predominates.
序列相似性	Contains 1 HTH myb-type DNA-binding domain.
结构域	The acidic N-terminal domain binds to the ankyrin repeats of TNKS1 and TNKS2. The C-terminal domain binds microtubules. The TRFH dimerization region mediates the interaction with TINF2.
翻译后修饰	Phosphorylated preferentially on Ser-219 in an ATM-dependent manner in response to ionizing DNA damage. ADP-ribosylation by TNKS1 or TNKS2 diminishes its ability to bind to telomeric DNA. Ubiquitinated by RLIM/RNF12, leading to its degradation by the proteasome. Ubiquitinated by a SCF (SKP1-CUL1-F-box protein) ubiquitin-protein ligase complex, leading to its degradation by the proteasome.
细胞定位	Nucleus. Cytoplasm > cytoskeleton > spindle. Chromosome > telomere. Colocalizes with telomeric DNA in interphase and metaphase cells and is located at chromosome ends during metaphase. Associates with the mitotic spindle.

图片



10% SDS-PAGE stained with Coomassie Blue (Lane 1), immunoblotting with anti-6xHis (Lane 2)

Please note: All products are "FOR RESEARCH USE ONLY. NOT FOR USE IN DIAGNOSTIC PROCEDURES"

Our Abpromise to you: Quality guaranteed and expert technical support

- Replacement or refund for products not performing as stated on the datasheet
- Valid for 12 months from date of delivery

- Response to your inquiry within 24 hours
- We provide support in Chinese, English, French, German, Japanese and Spanish
- Extensive multi-media technical resources to help you
- We investigate all quality concerns to ensure our products perform to the highest standards

If the product does not perform as described on this datasheet, we will offer a refund or replacement. For full details of the Abpromise, please visit <https://www.abcam.cn/abpromise> or contact our technical team.

Terms and conditions

- Guarantee only valid for products bought direct from Abcam or one of our authorized distributors