

Recombinant human SynCAM/CADM1 protein ab167740

3 图像

描述

产品名称	重组人SynCAM/CADM1蛋白
生物活性	Measured by its binding ability in a functional ELISA. Immobilized rhCADM1 at 2 µg/ml (100 µl/well) can bind biotinylated Human CRTAM with a linear range of 12.5 – 500 ng/ml.
纯度	> 95 % SDS-PAGE. ab167740 was lyophilized from 0.22 µm filtered solution.
内毒素水平	< 1.000 Eu/µg
表达系统	HEK 293 cells
Accession	<u>Q9BY67</u>
蛋白长度	Protein fragment
无动物成分	No
性质	Recombinant
种属	Human
序列	<p>QNLFTKDVTVIEGEVATISQVKNKSDDSVIQLLNPNRQTIYF RDFRPLKD SRFQLLNFSSELKVSLTNVISDEGRYFCQLYTDPQPESYT TITVLVPP RNLMDIQKDTAVEGEEIEVNCTAMASKPATTIRWFKGNTEL KGKSEVEE WSDMYTVTSQMLMLKVHKEDDGVPVICQVEHPAVTGNLQTQRY LEVQYKPQ VHIQMTYPLQGLTREGDALELTCEAIGKPQPMVTWVRVDE MPQHAVLS GPNLFINNLNKTDNGTYRCEASNIVGKAHSDYMLYVYDPPTT IPPPTTTT TTTTTTTTTILTIITDSRAGEEGSIRAVDH</p>
预测分子量	39 kDa including tags
氨基酸	45 to 374
标签	His tag C-Terminus

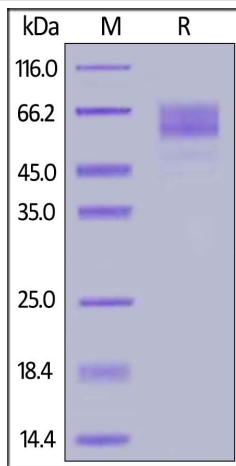
技术指标

Our **Abpromise guarantee** covers the use of **ab167740** in the following tested applications.

The application notes include recommended starting dilutions; optimal dilutions/concentrations should be determined by the end user.

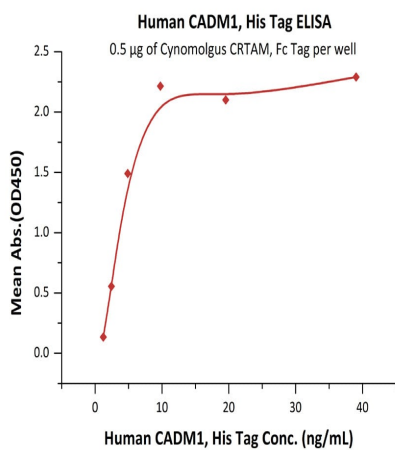
应用	Functional Studies SDS-PAGE ELISA
形式	Lyophilized
补充说明	This product was previously labelled as SynCAM
制备和贮存	
稳定性和存储	Shipped at 4°C. Store at +4°C short term (1-2 weeks). Upon delivery aliquot. Store at -20°C or -80°C. Avoid freeze / thaw cycle. pH: 7.40 Constituents: 94% PBS, 5% Trehalose This product is an active protein and may elicit a biological response in vivo, handle with caution.
复溶	It is recommended to reconstitute the lyophilized protein in sterile deionized water to a final concentration of 100 ug/ml. Solubilize for 30 to 60 minutes at room temperature with occasional gentle mixing. Carrier protein (0.1% HSA or BSA) is strongly recommended for further dilution and long term storage.
常规信息	
功能	Mediates homophilic cell-cell adhesion in a Ca(2+)-independent manner. Also mediates heterophilic cell-cell adhesion with CADM3 and PVRL3 in a Ca(2+)-independent manner. Acts as a tumor suppressor in non-small-cell lung cancer (NSCLC) cells. Interaction with CRTAM promotes natural killer (NK) cell cytotoxicity and interferon-gamma (IFN-gamma) secretion by CD8+ cells in vitro as well as NK cell-mediated rejection of tumors expressing CADM3 in vivo. May contribute to the less invasive phenotypes of lepidic growth tumor cells. In mast cells, may mediate attachment to and promote communication with nerves. CADM1, together with MITF, is essential for development and survival of mast cells in vivo. May act as a synaptic cell adhesion molecule that drives synapse assembly. May be involved in neuronal migration, axon growth, pathfinding, and fasciculation on the axons of differentiating neurons. May play diverse roles in the spermatogenesis including in the adhesion of spermatocytes and spermatids to Sertoli cells and for their normal differentiation into mature spermatozoa.
序列相似性	Belongs to the nectin family. Contains 2 Ig-like C2-type (immunoglobulin-like) domains. Contains 1 Ig-like V-type (immunoglobulin-like) domain.
结构域	The cytoplasmic domain appears to play a critical role in proapoptosis and tumor suppressor activity in NSCLC.
细胞定位	Cell membrane. Associates with perinuclear and plasma membranes in vivo. Localized to the basolateral plasma membrane of epithelial cells in gall bladder.

图片



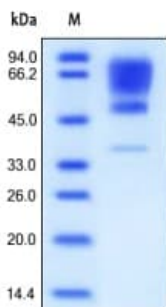
SDS-PAGE - Recombinant human SynCAM/CADM1 protein (ab167740)

Human CADM1, His Tag on SDS-PAGE under reducing (R) condition. The gel was stained overnight with Coomassie Blue. The purity of the protein is greater than 95%.



Functional Studies - Recombinant human SynCAM/CADM1 protein (ab167740)

Immobilized Cynomolgus CRTAM, Fc Tag at 5 µg/mL (100 µL/well) can bind Human CADM1, His Tag with a linear range of 0.6-5 ng/mL.



SDS-PAGE - Recombinant human SynCAM/CADM1 protein (ab167740)

SDS-PAGE analysis of reduced ab167740 and staining overnight with Coomassie Blue. In DTT-reduced SDS-PAGE, SynCAM/CADM1 protein migrates as 38.5kDa, 50kDa and 55-85 kDa poly peptide due to different glycosylation.

Our Abpromise to you: Quality guaranteed and expert technical support

- Replacement or refund for products not performing as stated on the datasheet
- Valid for 12 months from date of delivery
- Response to your inquiry within 24 hours

- We provide support in Chinese, English, French, German, Japanese and Spanish
- Extensive multi-media technical resources to help you
- We investigate all quality concerns to ensure our products perform to the highest standards

If the product does not perform as described on this datasheet, we will offer a refund or replacement. For full details of the Abpromise, please visit <https://www.abcam.cn/abpromise> or contact our technical team.

Terms and conditions

- Guarantee only valid for products bought direct from Abcam or one of our authorized distributors