

Recombinant Human Sulfatase 1/SULF1 protein ab153209

1 图像

描述

产品名称	重组人Sulfatase 1/SULF1蛋白
表达系统	Wheat germ
蛋白长度	Protein fragment
无动物成分	No
性质	Recombinant
种属	Human
序列	RTVNETHNFLFCEFATGFLEYFDMNTDPYQLTNTVHTVERGI LNQLHVQL MELRSCQGYKQCNPKNLDVGNKDGGSYDLHRGQLWDGWEG
氨基酸	780 to 871
标签	GST tag N-Terminus

技术指标

Our **Abpromise guarantee** covers the use of **ab153209** in the following tested applications.

The application notes include recommended starting dilutions; optimal dilutions/concentrations should be determined by the end user.

应用	ELISA Western blot
形式	Liquid
补充说明	This product was previously labelled as Sulfatase 1.

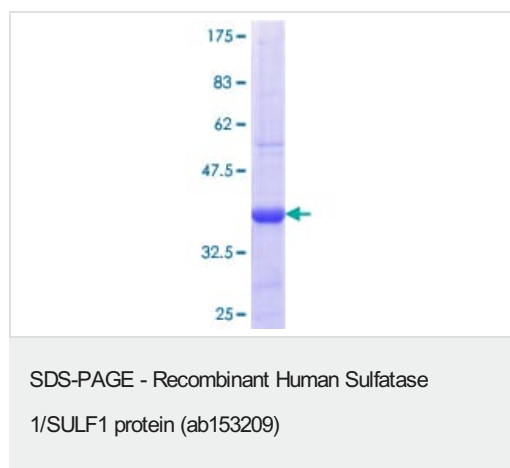
制备和贮存

稳定性和存储	Shipped on dry ice. Upon delivery aliquot and store at -80°C. Avoid freeze / thaw cycles. pH: 8.00 Constituents: 0.31% Glutathione, 0.79% Tris HCl
--------	--

常规信息

功能	Exhibits arylsulfatase activity and highly specific endoglucosamine-6-sulfatase activity. It can remove sulfate from the C-6 position of glucosamine within specific subregions of intact heparin. Diminishes HSPG (heparan sulfate proteoglycans) sulfation, inhibits signaling by heparin-dependent growth factors, diminishes proliferation, and facilitates apoptosis in response to exogenous stimulation.
组织特异性	Expressed at highest levels in testis, stomach, skeletal muscle, lung, kidney, pancreas, small intestine and colon. It is also detected in normal ovarian surface epithelial cells. Down-regulation seen in ovarian carcinoma cell lines, ovarian cancers, breast, pancreatic, renal and hepatocellular carcinoma cell lines.
序列相似性	Belongs to the sulfatase family.
翻译后修饰	The conversion to 3-oxoalanine (also known as C-formylglycine, FGly), of a serine or cysteine residue in prokaryotes and of a cysteine residue in eukaryotes, is critical for catalytic activity.
细胞定位	Endoplasmic reticulum. Golgi apparatus > Golgi stack. Cell surface. Also localized on the cell surface.

图片



ab153209 on a 12.5% SDS-PAGE stained with Coomassie Blue.

Please note: All products are "FOR RESEARCH USE ONLY. NOT FOR USE IN DIAGNOSTIC PROCEDURES"

Our Abpromise to you: Quality guaranteed and expert technical support

- Replacement or refund for products not performing as stated on the datasheet
- Valid for 12 months from date of delivery
- Response to your inquiry within 24 hours
- We provide support in Chinese, English, French, German, Japanese and Spanish
- Extensive multi-media technical resources to help you
- We investigate all quality concerns to ensure our products perform to the highest standards

If the product does not perform as described on this datasheet, we will offer a refund or replacement. For full details of the Abpromise, please visit <https://www.abcam.cn/abpromise> or contact our technical team.

Terms and conditions

-
- Guarantee only valid for products bought direct from Abcam or one of our authorized distributors