

Recombinant human ST2 protein (Active) ab233601

[1 References](#) [1 图像](#)

描述

产品名称	重组人ST2蛋白(Active)
生物活性	Measured by its ability to inhibit proliferation using D10.G4.1 mouse helper T cells. The ED ₅₀ for this effect is less or equal to 10 ng/ml with IL-33.
纯度	> 95 % SDS-PAGE. Affinity purified
内毒素水平	< 1.000 Eu/μg
表达系统	Baculovirus infected insect cells
Accession	<u>Q01638</u>
蛋白长度	Protein fragment
无动物成分	No
性质	Recombinant
种属	Human
序列	<pre> KFSKQSWGLENEALIVRCPRQGKPSYTVDWYYSQTNKSIPTQ ERNRVFAS GQLLKFLPAAVADSGIYTCIVRSPTFNRTGYANVTIYKKQSD CNVPDYLM YSTVSGSEKNSKIYCPTIDLYNWTAPLEWFKNCQALQGSRYR AHKSFLVI DNVMTEDAGDYTCKFIHNENGANYSVTATRSFTVKDEQGFSL FPVIGAPA QNEIKEVEIGKNANLTCSACFGKGTQFLAAVLWQLNGTKITD FGEPRIQQ EEGQNQSFSNGLACLDMVLR IADVKEEDLLLQYDCLALNLHG LRRHTVRL SRKNPIDHHSLEHHHHHH </pre>
预测分子量	36 kDa including tags
氨基酸	19 to 328
标签	His tag C-Terminus
额外的序列信息	Extracellular domain (NP_057316).

技术指标

Our **Abpromise guarantee** covers the use of **ab233601** in the following tested applications.

The application notes include recommended starting dilutions; optimal dilutions/concentrations should be determined by the end user.

应用 Functional Studies

SDS-PAGE

形式 Liquid

制备和贮存

稳定性和存储 Shipped at 4°C. Store at +4°C short term (1-2 weeks). Upon delivery aliquot. Store at -20°C or -80°C. Avoid freeze / thaw cycle.

pH: 7.40

Constituents: PBS, 10% Glycerol (glycerin, glycerine)

This product is an active protein and may elicit a biological response in vivo, handle with caution.

常规信息

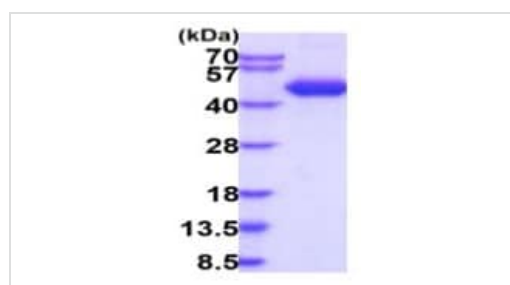
功能 Receptor for interleukin-33 (IL-33), its stimulation recruits MYD88, IRAK1, IRAK4, and TRAF6, followed by phosphorylation of MAPK3/ERK1 and/or MAPK1/ERK2, MAPK14, and MAPK8. Possibly involved in helper T-cell function.

组织特异性 Highly expressed in kidney, lung, placenta, stomach, skeletal muscle, colon and small intestine. Isoform A is prevalently expressed in the lung, testis, placenta, stomach and colon. Isoform B is more abundant in the brain, kidney and the liver. Isoform C is not detected in brain, heart, liver, kidney and skeletal muscle.

序列相似性 Belongs to the interleukin-1 receptor family.
Contains 3 Ig-like C2-type (immunoglobulin-like) domains.
Contains 1 TIR domain.

细胞定位 Secreted and Cell membrane.

图片



15% SDS-PAGE analysis of 3 µg ab233601.

MW: 40-57 kDa (SDS-PAGE under reducing conditions).

SDS-PAGE - Recombinant human ST2 protein
(Active) (ab233601)

Please note: All products are "FOR RESEARCH USE ONLY. NOT FOR USE IN DIAGNOSTIC PROCEDURES"

Our Abpromise to you: Quality guaranteed and expert technical support

- Replacement or refund for products not performing as stated on the datasheet
- Valid for 12 months from date of delivery
- Response to your inquiry within 24 hours

- We provide support in Chinese, English, French, German, Japanese and Spanish
- Extensive multi-media technical resources to help you
- We investigate all quality concerns to ensure our products perform to the highest standards

If the product does not perform as described on this datasheet, we will offer a refund or replacement. For full details of the Abpromise, please visit <https://www.abcam.cn/abpromise> or contact our technical team.

Terms and conditions

- Guarantee only valid for products bought direct from Abcam or one of our authorized distributors