

## Recombinant Human Sphingomyelin Synthase 2 protein ab153615

1 图像

描述

产品名称	重组人Sphingomyelin Synthase 2蛋白
表达系统	Wheat germ
蛋白长度	Full length protein
无动物成分	No
性质	Recombinant
种属	Human
序列	MDIIETAKLEEHLNQPSDPTNTYARPAEPVEEENKNGNGKP KSLSSGLR KGTKKYPDYIQIAMPTESRNKFPLEWWKTGIAFIYAVFNLVL TTVMITVV HERVPPKELSPPLPDKFFDYIDRVKWAFSVSEINGIILVGLW ITQWLFLR YKSIVGRRFCFIIGTLYLYRCITMYVTTLVPVGMHFQCAPKL NGDSQAKV QRILRLISGGLSITGSHILCGDFLFSGHTVTLTLTYLFIKE YSPRHFWW YHLICWLLSAAGIICILVAHEHYTIDVIIAYYITTRLFWWYH SMANEKNL KVSSQTNFLSRAWWFPIFYFFEKNVQGSIPCCFSWPLSWPPG CFKSSCKK YSRVQKIGEDNEKST
氨基酸	1 to 365
标签	GST tag N-Terminus

技术指标

Our **Abpromise guarantee** covers the use of **ab153615** in the following tested applications.

The application notes include recommended starting dilutions; optimal dilutions/concentrations should be determined by the end user.

应用	Western blot
	ELISA
形式	Liquid

## 补充说明

### 制备和贮存

#### 稳定性和存储

Shipped on dry ice. Upon delivery aliquot and store at -80°C. Avoid freeze / thaw cycles.

pH: 8.00

Constituents: 0.31% Glutathione, 0.79% Tris HCl

### 常规信息

#### 功能

Bidirectional lipid cholinephosphotransferase capable of converting phosphatidylcholine (PC) and ceramide to sphingomyelin (SM) and diacylglycerol (DAG) and vice versa. Direction is dependent on the relative concentrations of DAG and ceramide as phosphocholine acceptors. Directly and specifically recognizes the choline head group on the substrate. Also requires two fatty chains on the choline-P donor molecule in order to be recognized efficiently as a substrate. Does not function strictly as a SM synthase. Required for cell growth.

#### 组织特异性

Brain, heart, kidney, liver, muscle and stomach.

#### 序列相似性

Belongs to the sphingomyelin synthase family.

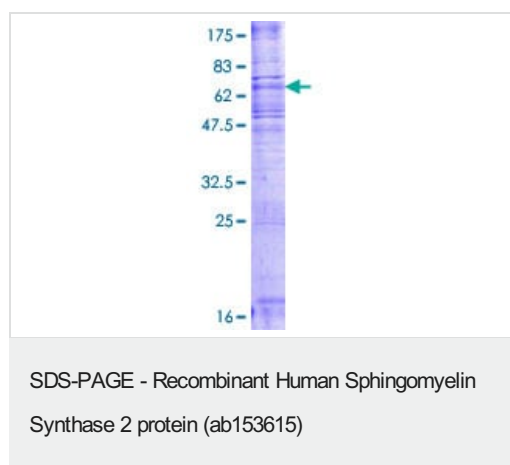
#### 翻译后修饰

Palmitoylated on Cys-331, Cys-332, Cys-343 and Cys-348; which plays an important role in plasma membrane localization.

#### 细胞定位

Cell membrane. Golgi apparatus membrane. Predominantly plasma membrane, some in Golgi apparatus.

### 图片



ab153615 on a 12.5% SDS-PAGE stained with Coomassie Blue.

**Please note:** All products are "FOR RESEARCH USE ONLY. NOT FOR USE IN DIAGNOSTIC PROCEDURES"

### Our Abpromise to you: Quality guaranteed and expert technical support

- Replacement or refund for products not performing as stated on the datasheet

- Valid for 12 months from date of delivery
- Response to your inquiry within 24 hours
- We provide support in Chinese, English, French, German, Japanese and Spanish
- Extensive multi-media technical resources to help you
- We investigate all quality concerns to ensure our products perform to the highest standards

If the product does not perform as described on this datasheet, we will offer a refund or replacement. For full details of the Abpromise, please visit <https://www.abcam.cn/abpromise> or contact our technical team.

### **Terms and conditions**

---

- Guarantee only valid for products bought direct from Abcam or one of our authorized distributors