

Recombinant Human SorLA/SORL1 protein ab114683

1 图像

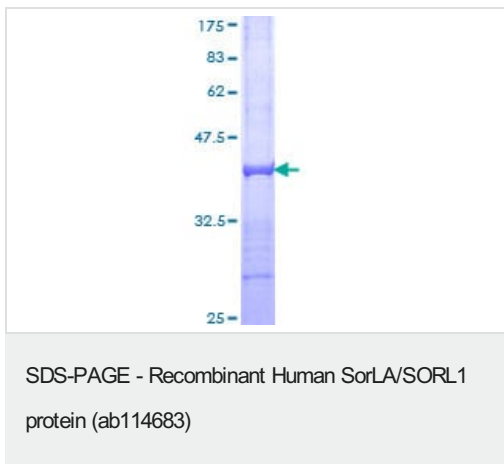
描述	
产品名称	重组人SorLA/SORL1蛋白
表达系统	Wheat germ
Accession	<u>Q92673</u>
蛋白长度	Protein fragment
无动物成分	No
性质	Recombinant
种属	Human
序列	SAALQPEPIKVYGGVSLNDSHNQMVVHWAGEKSNVIVALARD SLALARPK SSDVYVSYDYGKSFKKISDKLNFGLGNRSEAVIAQFYHSPAD NKRYIFAD
预测分子量	37 kDa including tags
氨基酸	82 to 181
标签	GST tag N-Terminus
技术指标	
Our Abpromise guarantee covers the use of ab114683 in the following tested applications.	
The application notes include recommended starting dilutions; optimal dilutions/concentrations should be determined by the end user.	
应用	Western blot SDS-PAGE ELISA
形式	Liquid
补充说明	This product was previously labelled as SorLA.
制备和贮存	
稳定性和存储	Shipped on dry ice. Upon delivery aliquot and store at -80°C. Avoid freeze / thaw cycles. pH: 8.00

Constituents: 0.3% Glutathione, 0.79% Tris HCl

常规信息

功能	Likely to be a multifunctional endocytic receptor, that may be implicated in the uptake of lipoproteins and of proteases. Binds LDL, the major cholesterol-carrying lipoprotein of plasma, and transports it into cells by endocytosis. Binds the receptor-associated protein (RAP). Could play a role in cell-cell interaction.
组织特异性	Expressed mainly in brain, where it is most abundant in the cerebellum, cerebral cortex and the occipital pole; low expression in the putamen and the thalamus. According to PubMed:9157966, found in spinal cord, testis, liver, kidney and pancreas with detectable levels in placenta, lung and heart. According to PubMed:8940146, expressed in the prostate, ovary, thyroid and spleen, but not found in kidney, liver, lung, skeletal muscle, bone marrow and adrenals.
序列相似性	Belongs to the SORL1 family. Contains 5 BNR repeats. Contains 1 EGF-like domain. Contains 6 fibronectin type-III domains. Contains 11 LDL-receptor class A domains. Contains 5 LDL-receptor class B repeats.
翻译后修饰	The propeptide removed in the N-terminus may be cleaved by furin or homologous proteases.
细胞定位	Membrane.

图片



ab114683 analysed on a 12.5% SDS-PAGE gel stained with Coomassie Blue.

Please note: All products are "FOR RESEARCH USE ONLY. NOT FOR USE IN DIAGNOSTIC PROCEDURES"

Our Abpromise to you: Quality guaranteed and expert technical support

- Replacement or refund for products not performing as stated on the datasheet
- Valid for 12 months from date of delivery
- Response to your inquiry within 24 hours
- We provide support in Chinese, English, French, German, Japanese and Spanish

- Extensive multi-media technical resources to help you
- We investigate all quality concerns to ensure our products perform to the highest standards

If the product does not perform as described on this datasheet, we will offer a refund or replacement. For full details of the Abpromise, please visit <https://www.abcam.cn/abpromise> or contact our technical team.

Terms and conditions

- Guarantee only valid for products bought direct from Abcam or one of our authorized distributors