

Recombinant Human SNAP25 protein ab74529

2 References 2 图像

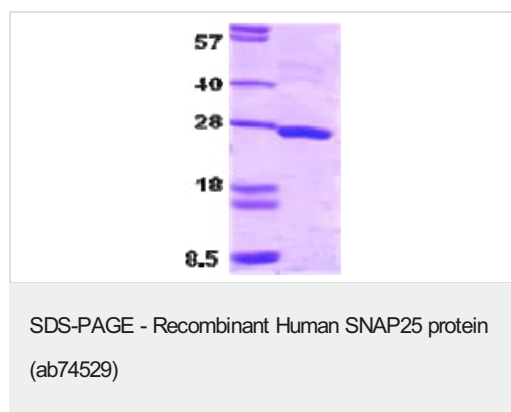
描述	
产品名称	重组人SNAP25蛋白
纯度	> 90 % SDS-PAGE. ab74529 was purified by using conventional chromatography techniques.
表达系统	Escherichia coli
蛋白长度	Full length protein
无动物成分	No
性质	Recombinant
种属	Human
序列	MAEDADMRNE LEEMQRRADQ LADESLESTR RMLQLVEESK DAGIRTLVML DEQGEQLERI EEGMDQINKD MKEAEKNLTD LGKFCGLCVC PCNKLKSSDA YKKAWGNNQD GVVASQPARV VDEREQMAIS GGFIRRVTD ARENEMDENL EQVSGIIGNL RHMALDMGNE IDTQNRQIDR IMEKADSNKT RIDEANQRAT KMLGSG

技术指标	
Our Abpromise guarantee covers the use of ab74529 in the following tested applications.	
The application notes include recommended starting dilutions; optimal dilutions/concentrations should be determined by the end user.	
应用	SDS-PAGE Western blot
形式	Liquid

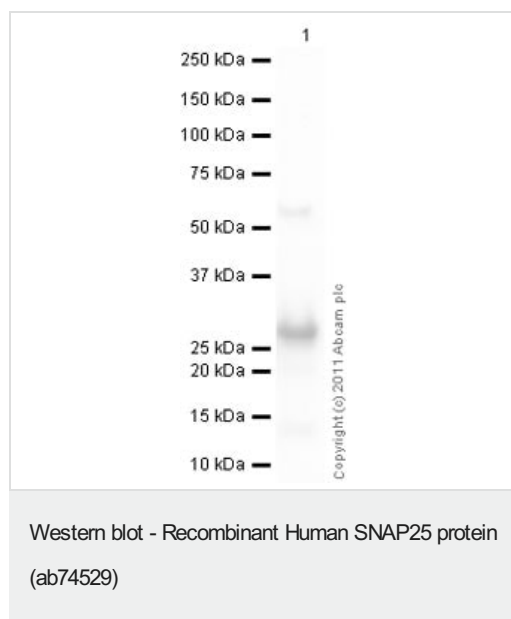
制备和贮存	
稳定性和存储	Shipped at 4°C. Upon delivery aliquot and store at -20°C. Avoid freeze / thaw cycles. pH: 7.50 Constituents: 0.0154% DTT, 0.3025% Tris, 10% Glycerol

功能	t-SNARE involved in the molecular regulation of neurotransmitter release. May play an important role in the synaptic function of specific neuronal systems. Associates with proteins involved in vesicle docking and membrane fusion. Regulates plasma membrane recycling through its interaction with CENPF.
组织特异性	Neurons of the neocortex, hippocampus, piriform cortex, anterior thalamic nuclei, pontine nuclei, and granule cells of the cerebellum.
序列相似性	Belongs to the SNAP-25 family. Contains 2 t-SNARE coiled-coil homology domains.
翻译后修饰	Palmitoylated. Cys-85 appears to be the main site, and palmitoylation is required for membrane association.
细胞定位	Cytoplasm > perinuclear region. Cell membrane. Cell junction > synapse > synaptosome. Membrane association requires palmitoylation. Expressed throughout cytoplasm, concentrating at the perinuclear region.

图片



15% SDS-PAGE showing ab74529 (3µg)



Anti-SNAP25 antibody ([ab41455](#)) at 1 µg/ml + Recombinant Human SNAP25 protein (ab74529) at 0.01 µg

Secondary

Goat Anti-Rabbit IgG H&L (HRP) preadsorbed ([ab97080](#)) at 1/5000 dilution

Developed using the ECL technique.

Performed under reducing conditions.

Exposure time: 1 minute

Our Abpromise to you: Quality guaranteed and expert technical support

- Replacement or refund for products not performing as stated on the datasheet
- Valid for 12 months from date of delivery
- Response to your inquiry within 24 hours

- We provide support in Chinese, English, French, German, Japanese and Spanish
- Extensive multi-media technical resources to help you
- We investigate all quality concerns to ensure our products perform to the highest standards

If the product does not perform as described on this datasheet, we will offer a refund or replacement. For full details of the Abpromise, please visit <https://www.abcam.cn/abpromise> or contact our technical team.

Terms and conditions

- Guarantee only valid for products bought direct from Abcam or one of our authorized distributors