

Recombinant Human Serotonin transporter protein ab132415

1 图像

描述		
产品名称	重组人Serotonin transporter蛋白	
表达系统	Wheat germ	
Accession	<u>P31645</u>	
蛋白长度	Full length protein	
无动物成分	No	
性质	Recombinant	
种属	Human	
序列	METTPLNSQK QLSACEDGED CQENGVLQKV VPTPGDKVES GQISNGYSAV PSPGAGDDTR HSIPATTTTL VAELHQGERE TWGKKVDFLL SVIGYAVDLG NVWRFPYICY QNGGGAFLLP YTIMAIFFGI PLFYMELALG QYHRNGCISI WRKICPIFKG IGYAICIIAF YIASYYNTIM AWALYYLISS FTDQLPWTSC KNSWNTGNCT NYFSEDNITW TLHSTSPAEE FYTRHVLQIH RSKGLQDLGG ISWQLALCIM LIFTVIYFSI WKGVKTSQKV VWVTATFPYI ILSVLLVRGA TLPGAWRGVL FYLKPNWQKL LETGVWIDAA AQIFFSLGPG FGVLLAFASY NKFNNNCYQD ALVTSVVNCM TSFVSGFVIF TVLGYMAEMR NEDVSEVAKD AGPSLLFITY AEAIANMPAS TFFAIIFFLM LITLGLDSTF AGLEGVITAV LDEFPHVWAK RRERFVLAVV ITCFFGSLVT LTFGGAYVVK LLEEYATGPA VLTVALIEAV AVSWFYGITQ FCRDVKEMLG FSPGFWFRIC WVAISPLFLL FIICSFLMSP PQLRLFQYNY PYWSIILGYC IGTSSFICIP TYIAYRLIIT PGTFKERIIK SITPETPTEI PCGDIRLNAV	
预测分子量	97 kDa including tags	
氨基酸	1 to 630	
标签	GST tag N-Terminus	

技术指标

Our **Abpromise guarantee** covers the use of **ab132415** in the following tested applications.

The application notes include recommended starting dilutions; optimal dilutions/concentrations should be determined by the end user.

应用	SDS-PAGE
	Western blot
	ELISA
形式	Liquid

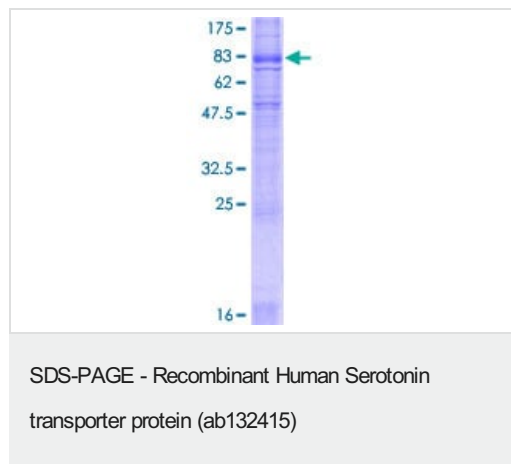
制备和贮存

稳定性和存储	Shipped on dry ice. Upon delivery aliquot and store at -80°C. Avoid freeze / thaw cycles.
	pH: 8.00
	Constituents: 0.31% Glutathione, 0.79% Tris HCl

常规信息

功能	Serotonin transporter whose primary function in the central nervous system involves the regulation of serotonergic signaling via transport of serotonin molecules from the synaptic cleft back into the pre-synaptic terminal for re-utilization. Plays a key role in mediating regulation of the availability of serotonin to other receptors of serotonergic systems. Terminates the action of serotonin and recycles it in a sodium-dependent manner.
组织特异性	Expressed in platelets (at protein level).
序列相似性	Belongs to the sodium:neurotransmitter symporter (SNF) (TC 2.A.22) family. SLC6A4 subfamily.
翻译后修饰	Glycosylated; modification with sialylated N-glycans is a requirement for transporters to associate with each other and to function as homooligomeric forms. Phosphorylated at Ser-611, Thr-613 and Thr-616.
细胞定位	Cell membrane. Endomembrane system. Endosome membrane. Translocates from intracellular locations to the plasma membrane. Density of transporter molecules on the plasma membrane is itself regulated by serotonin.

图片



12.5% SDS-PAGE analysis of ab132415, stained with Coomassie Blue.

Our Abpromise to you: Quality guaranteed and expert technical support

- Replacement or refund for products not performing as stated on the datasheet
- Valid for 12 months from date of delivery
- Response to your inquiry within 24 hours

- We provide support in Chinese, English, French, German, Japanese and Spanish
- Extensive multi-media technical resources to help you
- We investigate all quality concerns to ensure our products perform to the highest standards

If the product does not perform as described on this datasheet, we will offer a refund or replacement. For full details of the Abpromise, please visit <https://www.abcam.cn/abpromise> or contact our technical team.

Terms and conditions

- Guarantee only valid for products bought direct from Abcam or one of our authorized distributors