

# Recombinant Human SERCA1 ATPase protein ab152208

## 1 图像

### 描述

|           |  |
|-----------|--|
| 产品名称      | 重组人SERCA1 ATPase蛋白   |
| 表达系统      | Wheat germ   |
| Accession | <b><u>O14983</u></b>   |
| 蛋白长度      | Protein fragment   |
| 无动物成分     | No   |
| 性质        | Recombinant  |
| 种属        | Human  |
| 序列        | IDRCNYVRVGTTTRVPLTGPVKEKIMAVIKEWGTGRDTLRCLA<br>LATRDTPP<br>KREEMVLDD SARFLEYETDLTFVGVVGM LDPPRKEVTGSIQ |
| 预测分子量     | 36 kDa including tags  |
| 氨基酸       | 522 to 612   |

### 技术指标

Our **Abpromise guarantee** covers the use of **ab152208** in the following tested applications.

The application notes include recommended starting dilutions; optimal dilutions/concentrations should be determined by the end user.

|      |                                   |
|------|-----------------------------------|
| 应用   | SDS-PAGE<br>Western blot<br>ELISA |
| 形式   | Liquid                            |
| 补充说明 |                                   |

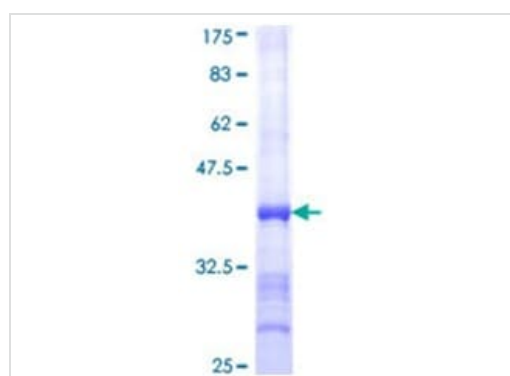
### 制备和贮存

|        |  |
|--------|--|
| 稳定性和存储 | Shipped on dry ice. Upon delivery aliquot and store at -80°C. Avoid freeze / thaw cycles.<br>pH: 8.00<br>Constituents: 0.31% Glutathione, 0.79% Tris HCl |
|--------|--|

## 常规信息

|       |   |
|-------|---|
| 功能    | Key regulator of striated muscle performance by acting as the major Ca(2+) ATPase responsible for the reuptake of cytosolic Ca(2+) into the sarcoplasmic reticulum. Catalyzes the hydrolysis of ATP coupled with the translocation of calcium from the cytosol to the sarcoplasmic reticulum lumen. Contributes to calcium sequestration involved in muscular excitation/contraction. |
| 组织特异性 | Skeletal muscle, fast twitch muscle (type II) fibers.   |
| 疾病相关  | Brody myopathy  |
| 序列相似性 | Belongs to the cation transport ATPase (P-type) (TC 3.A.3) family. Type IIA subfamily.  |
| 发展阶段  | Isoform SERCA1A accounts for more than 99% of SERCA1 isoforms expressed in adult skeletal muscle, while isoform SERCA1B predominates in neo-natal skeletal muscle.  |
| 细胞定位  | Endoplasmic reticulum membrane. Sarcoplasmic reticulum membrane.  |

## 图片



12.5% SDS-PAGE analysis of ab152208 stained with Coomassie Blue.

SDS-PAGE - Recombinant Human SERCA1  
ATPase protein (ab152208)

**Please note:** All products are "FOR RESEARCH USE ONLY. NOT FOR USE IN DIAGNOSTIC PROCEDURES"

## Our Abpromise to you: Quality guaranteed and expert technical support

- Replacement or refund for products not performing as stated on the datasheet
- Valid for 12 months from date of delivery
- Response to your inquiry within 24 hours
- We provide support in Chinese, English, French, German, Japanese and Spanish
- Extensive multi-media technical resources to help you
- We investigate all quality concerns to ensure our products perform to the highest standards

If the product does not perform as described on this datasheet, we will offer a refund or replacement. For full details of the Abpromise, please visit <https://www.abcam.cn/abpromise> or contact our technical team.

## Terms and conditions

---

- Guarantee only valid for products bought direct from Abcam or one of our authorized distributors