

Recombinant Human SAP97 protein ab152336

1 图像

描述		
产品名称	重组人SAP97蛋白	
表达系统	Wheat germ	
Accession	<u>Q12959</u>	
蛋白长度	Protein fragment	
无动物成分	No	
性质	Recombinant	
种属	Human	
序列	MPVRKQDTQRALHLL EEYRSKLSQTEDRQLRSSIERVINIFQ SNLFQALI DIQEFYEVTL LDNPKCIDRSKPSEPIQPVNTWEISLPSS	
预测分子量	36 kDa including tags	
氨基酸	1 to 90	

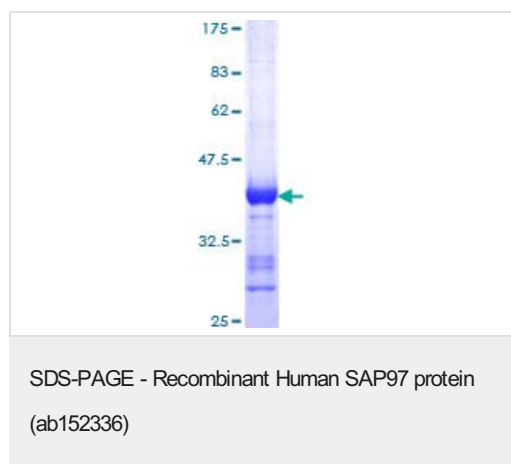
技术指标	
Our Abpromise guarantee covers the use of ab152336 in the following tested applications.	
The application notes include recommended starting dilutions; optimal dilutions/concentrations should be determined by the end user.	
应用	ELISA Western blot SDS-PAGE
形式	Liquid
补充说明	

制备和贮存	
稳定性和存储	Shipped on dry ice. Upon delivery aliquot and store at -80°C. Avoid freeze / thaw cycles. pH: 8.00 Constituents: 0.31% Glutathione, 0.79% Tris HCl

常规信息

功能	Essential multidomain scaffolding protein required for normal development (By similarity). Recruits channels, receptors and signaling molecules to discrete plasma membrane domains in polarized cells. May play a role in adherens junction assembly, signal transduction, cell proliferation, synaptogenesis and lymphocyte activation. Regulates the excitability of cardiac myocytes by modulating the functional expression of Kv4 channels. Functional regulator of Kv1.5 channel.
组织特异性	Abundantly expressed in atrial myocardium (at protein level). Expressed in lung fibroblasts, cervical epithelial and B-cells (at protein level). Widely expressed, with isoforms displaying different expression profiles.
序列相似性	Belongs to the MAGUK family. Contains 1 guanylate kinase-like domain. Contains 1 L27 domain. Contains 3 PDZ (DHR) domains. Contains 1 SH3 domain.
结构域	The alternatively spliced domain I3 corresponding to amino acids (636-669) of isoform 4 is an EPB41 binding site mediating association to membranes in polarized and non-polarized cells. The PDZ domains may also mediate association to membranes by binding to EPB41 and ADGRA2 together with the L27 domain that binds CASK and DLG2. The L27 domain may regulate DLG1 self-association. The N-terminal alternatively spliced region is capable of binding several SH3 domains and also moderates the level of protein oligomerization.
翻译后修饰	Phosphorylated by MAPK12. Phosphorylation of Ser-232 regulates association with GRIN2A.
细胞定位	Membrane. Basolateral cell membrane. Endoplasmic reticulum membrane. Cell junction, synapse, postsynaptic cell membrane, postsynaptic density. Cell junction, synapse. Cell membrane, sarcolemma. Colocalizes with EPB41 at regions of intercellular contacts. Basolateral in epithelial cells. May also associate with endoplasmic reticulum membranes. Mainly found in neurons soma, moderately found at postsynaptic densities (By similarity).

图片



12.5% SDS-PAGE analysis of ab152336 stained with Coomassie Blue.

Please note: All products are "FOR RESEARCH USE ONLY. NOT FOR USE IN DIAGNOSTIC PROCEDURES"

Our Abpromise to you: Quality guaranteed and expert technical support

- Replacement or refund for products not performing as stated on the datasheet
- Valid for 12 months from date of delivery
- Response to your inquiry within 24 hours

- We provide support in Chinese, English, French, German, Japanese and Spanish
- Extensive multi-media technical resources to help you
- We investigate all quality concerns to ensure our products perform to the highest standards

If the product does not perform as described on this datasheet, we will offer a refund or replacement. For full details of the Abpromise, please visit <https://www.abcam.cn/abpromise> or contact our technical team.

Terms and conditions

- Guarantee only valid for products bought direct from Abcam or one of our authorized distributors