

Recombinant Human RIP protein ab152911

1 图像

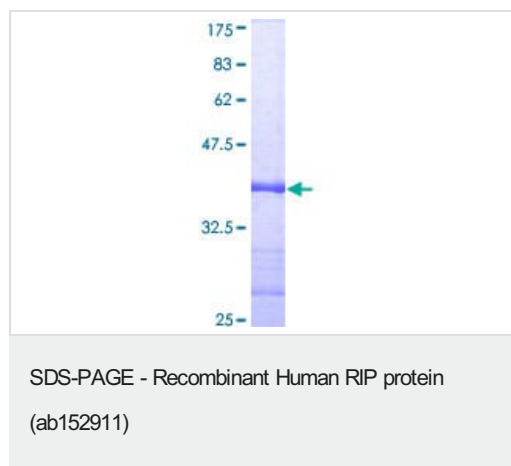
描述		
产品名称	重组人RIP蛋白	
表达系统	Wheat germ	
蛋白长度	Protein fragment	
无动物成分	No	
性质	Recombinant	
种属	Human	
序列	TNFKEEPAAKYQAI FDNTTSLTDKHLDP IRENLGKHWKNCAR KLGFTQSQ IDEIDHDYERDGL KEKVYQMLQKWVM REGIKGATVGKLAQ AL HQCSRIDL LSSLIYVSQN	
氨基酸	562 to 671	
标签	GST tag N-Terminus	

技术指标		
Our <b>Abpromise guarantee</b> covers the use of <b>ab152911</b> in the following tested applications.		
The application notes include recommended starting dilutions; optimal dilutions/concentrations should be determined by the end user.		
应用	Western blot	
	ELISA	
形式	Liquid	
补充说明		

制备和贮存		
稳定性和存储	Shipped on dry ice. Upon delivery aliquot and store at -80°C. Avoid freeze / thaw cycles.	
	pH: 8.00	
	Constituents: 0.31% Glutathione, 0.79% Tris HCl	

功能	Essential adapter molecule for the activation of NF-kappa-B. Following different upstream signals (binding of inflammatory cytokines, stimulation of pathogen recognition receptors, or DNA damage), particular RIPK1-containing complexes are formed, initiating a limited number of cellular responses. Upon TNFA stimulation RIPK1 is recruited to a TRADD-TRAF complex initiated by TNFR1 trimerization. There, it is ubiquitinated via 'Lys-63'-link chains, inducing its association with the IKK complex, and its activation through NEMO binding of polyubiquitin chains.
序列相似性	Belongs to the protein kinase superfamily. TKL Ser/Thr protein kinase family. Contains 1 death domain. Contains 1 protein kinase domain.
翻译后修饰	Proteolytically cleaved by caspase-8 during TNF-induced apoptosis. Cleavage abolishes NF-kappa-B activation and enhances pro-apototic signaling through the TRADD-FADD interaction. Autophosphorylated on serine and threonine residues. Ubiquitinated by 'Lys-11'-, 'Lys-48'-, 'Lys-63'- and linear-linked type ubiquitin. Polyubiquitination with 'Lys-63'-linked chains by TRAF2 induces association with the IKK complex. Deubiquitination of 'Lys-63'-linked chains and polyubiquitination with 'Lys-48'-linked chains by TNFAIP3 leads to RIPK1 proteasomal degradation and consequently to the termination of the TNF- or Linear polyubiquitinated; the head-to-tail polyubiquitination is mediated by the LUBAC complex. LPS-mediated activation of NF-kappa-B. Also ubiquitinated with 'Lys-11'-linked chains.
细胞定位	Cytoplasm.

## 图片



ab152911 on a 12.5% SDS-PAGE stained with Coomassie Blue.

**Please note:** All products are "FOR RESEARCH USE ONLY. NOT FOR USE IN DIAGNOSTIC PROCEDURES"

## Our Abpromise to you: Quality guaranteed and expert technical support

- Replacement or refund for products not performing as stated on the datasheet
- Valid for 12 months from date of delivery
- Response to your inquiry within 24 hours
- We provide support in Chinese, English, French, German, Japanese and Spanish
- Extensive multi-media technical resources to help you

- We investigate all quality concerns to ensure our products perform to the highest standards

If the product does not perform as described on this datasheet, we will offer a refund or replacement. For full details of the Abpromise, please visit <https://www.abcam.cn/abpromise> or contact our technical team.

### **Terms and conditions**

---

- Guarantee only valid for products bought direct from Abcam or one of our authorized distributors