

Product datasheet

Recombinant Human Retinal S antigen protein (His tag) ab226882

1 图像

描述

| | |
|-----------|--|
| 产品名称 | 重组人Retinal S antigen蛋白(His tag) |
| 纯度 | > 90 % SDS-PAGE. |
| 表达系统 | Yeast |
| Accession | <u>P10523</u> |
| 蛋白长度 | Full length protein |
| 无动物成分 | No |
| 性质 | Recombinant |
| 种属 | Human |
| 序列 | MAASGKTSKSEPNHVIFFKKISRDKSVTIYLGNRDYIDHVSQV QPVDGVVL VDPDLVKGKKVYVTLTCAFRYGQEDIDVIGLTFRRDLYFSRV QVYPPVGA ASTPTKLQESLLKKLGSNTYPFLLTFPDYLPCSVMLQPAPQD SGKSCGVD FEVKAFATDSTDAEEDKIPKKSSVRLLRKVVQHAPLEMGPQP RAEAAWQF FMSDKPLHLAVSLNKEIYFHGEPVTVTVTNTEKTVKKIK AFVEQVAN VVLVSSDYVVKPVAMEEAQEKVPPNSTLTKTLTLLPLLANNR ERRGIALD GKIKHEDTNLASSTIIKEGIDRTVLGILVSYQIKVKLTVSGF LGELTSSE VATEVPFRLMHPQPEDPAKESYQDANLVFEEFARHNLKDAGE AEEGKRDK NDVDE |
| 预测分子量 | 47 kDa including tags |
| 氨基酸 | 1 to 405 |
| 标签 | His tag N-Terminus |

技术指标

Our **Abpromise guarantee** covers the use of **ab226882** in the following tested applications.

The application notes include recommended starting dilutions; optimal dilutions/concentrations should be determined by the end user.

应用 SDS-PAGE

形式 Liquid

制备和贮存

稳定性和存储 Shipped at 4°C. Upon delivery aliquot. Store at -20°C or -80°C. Avoid freeze / thaw cycle.

pH: 7.2

Constituents: 50% Glycerol (glycerin, glycerine), Tris buffer

常规信息

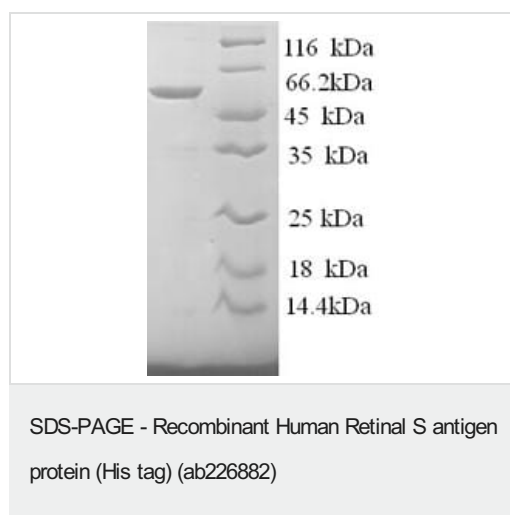
功能 Arrestin is one of the major proteins of the ros (retinal rod outer segments); it binds to photoactivated-phosphorylated rhodopsin, thereby apparently preventing the transducin-mediated activation of phosphodiesterase.

组织特异性 Retina and pineal gland.

疾病相关 Defects in SAG are a cause of congenital stationary night blindness Oguchi type 1 (CSNBO1) [MIM:258100]; also known as Oguchi disease. Congenital stationary night blindness is a non-progressive retinal disorder characterized by impaired night vision. CSNBO is an autosomal recessive form associated with fundus discoloration and abnormally slow dark adaptation.

序列相似性 Belongs to the arrestin family.

图片



(Tris-Glycine gel) Discontinuous SDS-PAGE (reduced) analysis of ab226882 with 5% enrichment gel and 15% separation gel.

Please note: All products are "FOR RESEARCH USE ONLY. NOT FOR USE IN DIAGNOSTIC PROCEDURES"

Our Abpromise to you: Quality guaranteed and expert technical support

- Replacement or refund for products not performing as stated on the datasheet

- Valid for 12 months from date of delivery
- Response to your inquiry within 24 hours

- We provide support in Chinese, English, French, German, Japanese and Spanish
- Extensive multi-media technical resources to help you
- We investigate all quality concerns to ensure our products perform to the highest standards

If the product does not perform as described on this datasheet, we will offer a refund or replacement. For full details of the Abpromise, please visit <https://www.abcam.cn/abpromise> or contact our technical team.

Terms and conditions

- Guarantee only valid for products bought direct from Abcam or one of our authorized distributors