

# Recombinant Human PSME3 protein ab115714

### 1 图像

#### 描述

<b>产品名称</b>	重组人PSME3蛋白	
<b>纯度</b>	> 90 % SDS-PAGE. ab115714 was purified using conventional chromatography techniques.	
<b>表达系统</b>	Escherichia coli	
<b>Accession</b>	<b><u>P61289</u></b>	
<b>蛋白长度</b>	Full length protein	
<b>无动物成分</b>	No	
<b>性质</b>	Recombinant	
<b>种属</b>	Human	
<b>序列</b>		MGSSHHHHHSSGLVPRGSHMASLLKVDQEVKLVDSFRERI TSEAEDLV ANFFPKLLELDSFLKEPILNIHDLTQIHSDMNLVPPDPILL TNSHDGLD GPTYKKRRLDECEEFQGTKVFMVPMGMLKSNQQLVDIIEKV KPEIRLLI EKCNTVKMWVQLLIPRIEDGNNFGVSIQEETVAELRTVESEA ASYLDQIS RYYITRAKLVSKIAYPHVEDYRRTVTEIDEKEYISLRLIIS ELRNQYVT LHMILKNIEKIKRPRSSNAETLY
<b>预测分子量</b>	32 kDa including tags	
<b>氨基酸</b>	1 to 254	
<b>标签</b>	His tag N-Terminus	

#### 技术指标

Our **Abpromise guarantee** covers the use of **ab115714** in the following tested applications.

The application notes include recommended starting dilutions; optimal dilutions/concentrations should be determined by the end user.

<b>应用</b>	SDS-PAGE Mass Spectrometry
<b>质谱法</b>	MALDI-TOF
<b>形式</b>	Liquid

## 制备和贮存

### 稳定性和存储

Shipped at 4°C. Store at +4°C short term (1-2 weeks). Upon delivery aliquot. Store at -20°C or -80°C. Avoid freeze / thaw cycle.

pH: 8.00

Constituents: 0.03% DTT, 0.32% Tris HCl, 40% Glycerol (glycerin, glycerine), 1.17% Sodium chloride

## 常规信息

### 功能

Subunit of the 11S REG-gamma (also called PA28-gamma) proteasome regulator, a donut-shaped homoheptamer which associates with the proteasome. 11S REG-gamma activates the trypsin-like catalytic subunit of the proteasome but inhibits the chymotrypsin-like and postglutamyl-preferring (PGPH) subunits. Facilitates the MDM2-p53/TP53 interaction which promotes ubiquitination- and MDM2-dependent proteasomal degradation of p53/TP53, limiting its accumulation and resulting in inhibited apoptosis after DNA damage. May also be involved in cell cycle regulation.

### 序列相似性

Belongs to the PA28 family.

### 结构域

The C-terminal sequences affect heptamer stability and proteasome affinity.

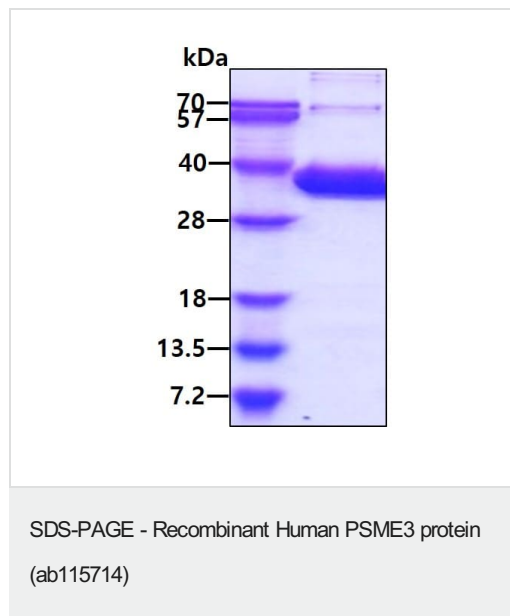
### 翻译后修饰

Phosphorylated by MAP3K3.

### 细胞定位

Nucleus. Cytoplasm. Localizes to the cytoplasm during mitosis following nuclear envelope breakdown at this distinct stage of the cell cycle which allows its interaction with MAP3K3 kinase.

## 图片



SDS-PAGE analysis of ab115714 (3µg).

**Please note:** All products are "FOR RESEARCH USE ONLY. NOT FOR USE IN DIAGNOSTIC PROCEDURES"

**Our Abpromise to you: Quality guaranteed and expert technical support**

- Replacement or refund for products not performing as stated on the datasheet
- Valid for 12 months from date of delivery
- Response to your inquiry within 24 hours
  
- We provide support in Chinese, English, French, German, Japanese and Spanish
- Extensive multi-media technical resources to help you
- We investigate all quality concerns to ensure our products perform to the highest standards

If the product does not perform as described on this datasheet, we will offer a refund or replacement. For full details of the Abpromise, please visit <https://www.abcam.cn/abpromise> or contact our technical team.

### **Terms and conditions**

---

- Guarantee only valid for products bought direct from Abcam or one of our authorized distributors