

Recombinant Human PRUNE protein ab153466

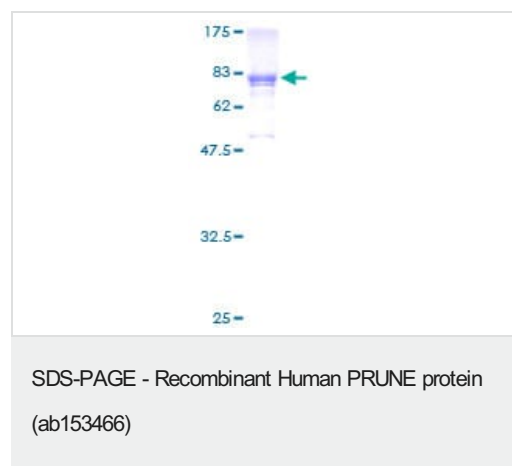
1 图像

描述	
产品名称	重组人PRUNE蛋白
表达系统	Wheat germ
蛋白长度	Full length protein
无动物成分	No
性质	Recombinant
种属	Human
序列	MEDYLQGCRAALQESRPLHVVLGNEACDLSTVSALALAFYL AKTTEAEE VFVPVLNIKRSELPLRGDIVFFLQKVHIPESILIFRDEIDLH ALYQAGQL TLILVDHHILSKSDTALEEAVAELDHRPIEPKHCPPCHVSV ELVGSCAT LVTERILQGAPEILDRQTAALLHGTIILDCVNMDLKIGKATP KDSKYVEK LEALFPDLPKRNDIFDSLQKAKFDVSGLTTEQMLRKDQKTIY RQGVKVAI SAIYMDLEAFLQRSNLLADLHAFCAHSYDVLVAMTIFFNTH NEPVRQLA IFCPHVALQTTICEVLERSHSPPLKLTPASSTHPNLHAYLQG NTQVSRKK LLPLLQEALSAYFDSMKIPSGQPETADVSREQVDKELDRASN SLISGLSQ DEEDPPLPPTPMNSLVDECPLDQGLPKLSAEAVFEKCSQISL SQSTTASL SKK
氨基酸	1 to 453
标签	GST tag N-Terminus

技术指标	
Our Abpromise guarantee covers the use of ab153466 in the following tested applications.	
The application notes include recommended starting dilutions; optimal dilutions/concentrations should be determined by the end user.	
应用	Western blot ELISA

形式	Liquid
补充说明	
制备和贮存	
稳定性和存储	<p>Shipped on dry ice. Upon delivery aliquot and store at -80°C. Avoid freeze / thaw cycles.</p> <p>pH: 8.00</p> <p>Constituents: 0.31% Glutathione, 0.79% Tris HCl</p>
常规信息	
功能	Phosphodiesterase (PDE) that has higher activity toward cAMP than cGMP, as substrate. Plays a role in cell proliferation, is able to induce cell motility and acts as a negative regulator of NME1.
组织特异性	Ubiquitously expressed. Seems to be overexpressed in aggressive sarcoma subtypes, such as leiomyosarcomas and malignant fibrous histiocytomas (MFH) as well as in the less malignant liposarcomas.
序列相似性	Belongs to the PPase class C family. Prune subfamily.
细胞定位	Cytoplasm. Nucleus. Cell junction > focal adhesion. In some transfected cells a nuclear staining is also observed.

图片



ab153466 on a 12.5% SDS-PAGE stained with Coomassie Blue.

Please note: All products are "FOR RESEARCH USE ONLY. NOT FOR USE IN DIAGNOSTIC PROCEDURES"

Our Abpromise to you: Quality guaranteed and expert technical support

- Replacement or refund for products not performing as stated on the datasheet
- Valid for 12 months from date of delivery
- Response to your inquiry within 24 hours

- We provide support in Chinese, English, French, German, Japanese and Spanish
- Extensive multi-media technical resources to help you
- We investigate all quality concerns to ensure our products perform to the highest standards

If the product does not perform as described on this datasheet, we will offer a refund or replacement. For full details of the Abpromise, please visit <https://www.abcam.cn/abpromise> or contact our technical team.

Terms and conditions

- Guarantee only valid for products bought direct from Abcam or one of our authorized distributors