

Recombinant Human Proteasome 20S LMP2 protein ab105592

1 图像

描述	
产品名称	重组人Proteasome 20S LMP2蛋白
纯度	> 90 % SDS-PAGE. ab105592 was purified by using anion-exchange chromatography (DEAE sepharose resin) and gel-filtration chromatography (Sephacryl S-200) with 20mM Tris pH 7.5, 2mM EDTA.
表达系统	Escherichia coli
Accession	<u>P28065</u>
蛋白长度	Full length protein
无动物成分	No
性质	Recombinant
种属	Human
序列	MGSSHHHHHSSGLVPRGSHMTTIMAVEFDGGVVMGSDSR VSA GEAVV NRVFDKLSPLHERIYCALSGSAADAQAVADMAAYQLELHGIE LEE PPL VLAAANVVRNISKYREDLSAHLMVAGWDQREGGQVYGTLLGG MLTRQ P FAIGGSGSTFIYGYVDAAYKPGMSPEECRRFTTDAIALAMSR DGSSGGV IYLVTTAAGVDHRVILGNELPKFYDE
预测分子量	24 kDa including tags
氨基酸	21 to 219
标签	His tag N-Terminus

技术指标	
Our <u>Abpromise guarantee</u> covers the use of ab105592 in the following tested applications.	
The application notes include recommended starting dilutions; optimal dilutions/concentrations should be determined by the end user.	
应用	SDS-PAGE Mass Spectrometry
质谱法	MALDI-TOF
形式	Liquid

制备和贮存

稳定性和存储

Shipped at 4°C. Upon delivery aliquot and store at -20°C or -80°C. Avoid repeated freeze / thaw cycles.

pH: 8.00

Constituents: 0.316% Tris HCl, 10% Glycerol (glycerin, glycerine), 0.29% Sodium chloride

常规信息

功能

The proteasome is a multicatalytic proteinase complex which is characterized by its ability to cleave peptides with Arg, Phe, Tyr, Leu, and Glu adjacent to the leaving group at neutral or slightly basic pH. The proteasome has an ATP-dependent proteolytic activity. This subunit is involved in antigen processing to generate class I binding peptides. Replacement of PSMB6 by PSMB9 increases the capacity of the immunoproteasome to cleave model peptides after hydrophobic and basic residues.

序列相似性

Belongs to the peptidase T1B family.

发展阶段

Highly expressed in immature dendritic cells (at protein level).

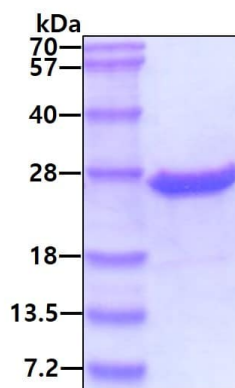
翻译后修饰

Autocleaved. The resulting N-terminal Thr residue of the mature subunit is responsible for the nucleophile proteolytic activity.

细胞定位

Cytoplasm. Nucleus.

图片



SDS-PAGE analysis of 3µg ab105592 under reducing condition and visualized by coomassie blue stain.

SDS-PAGE - Recombinant Human Proteasome 20S

LMP2 protein (ab105592)

Please note: All products are "FOR RESEARCH USE ONLY. NOT FOR USE IN DIAGNOSTIC PROCEDURES"

Our Abpromise to you: Quality guaranteed and expert technical support

- Replacement or refund for products not performing as stated on the datasheet

- Valid for 12 months from date of delivery
- Response to your inquiry within 24 hours
- We provide support in Chinese, English, French, German, Japanese and Spanish
- Extensive multi-media technical resources to help you
- We investigate all quality concerns to ensure our products perform to the highest standards

If the product does not perform as described on this datasheet, we will offer a refund or replacement. For full details of the Abpromise, please visit <https://www.abcam.cn/abpromise> or contact our technical team.

Terms and conditions

- Guarantee only valid for products bought direct from Abcam or one of our authorized distributors