

Recombinant human PPP1A/PPP1CA protein ab128559

5 图像

描述

产品名称	重组人PPP1A/PPP1CA蛋白
生物活性	The specific activity of ab128559 was determined to be 228 nmol/min/mg.
纯度	> 75 % Densitometry. Affinity purified.
表达系统	Baculovirus infected Sf9 cells
Accession	<u>P62136</u>
蛋白长度	Full length protein
无动物成分	No
性质	Recombinant
种属	Human
预测分子量	62 kDa including tags
氨基酸	1 to 330

技术指标

Our **Abpromise guarantee** covers the use of **ab128559** in the following tested applications.

The application notes include recommended starting dilutions; optimal dilutions/concentrations should be determined by the end user.

应用	Western blot Phosphatase Activity
形式	Liquid
补充说明	This product was previously labelled as PPP1A

制备和贮存

稳定性和存储	Shipped on dry ice. Upon delivery aliquot and store at -80°C. Avoid freeze / thaw cycles. pH: 7.50 Constituents: 0.31% Glutathione, 0.002% PMSF, 0.005% DTT, 0.79% Tris HCl, 0.003% EDTA, 0.88% Sodium chloride This product is an active protein and may elicit a biological response in vivo, handle with caution.
--------	---

常规信息

功能

Protein phosphatase 1 (PP1) is essential for cell division, and participates in the regulation of glycogen metabolism, muscle contractility and protein synthesis. Involved in regulation of ionic conductances and long-term synaptic plasticity. May play an important role in dephosphorylating substrates such as the postsynaptic density-associated Ca(2+)/calmodulin dependent protein kinase II. Component of the PTW/PP1 phosphatase complex, which plays a role in the control of chromatin structure and cell cycle progression during the transition from mitosis into interphase.

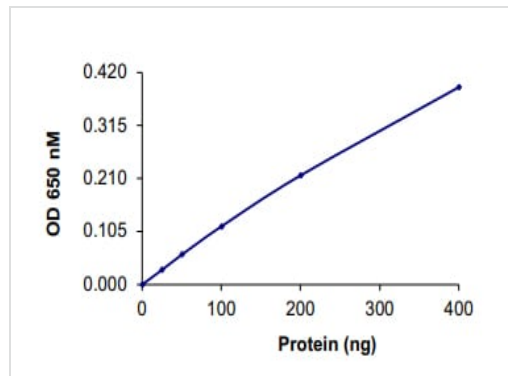
序列相似性

Belongs to the PPP phosphatase family. PP-1 subfamily.

细胞定位

Cytoplasm. Nucleus. Nucleus > nucleoplasm. Nucleus > nucleolus. Primarily nuclear and largely excluded from the nucleolus. Highly mobile in cells and can be relocalized through interaction with targeting subunits. NOM1 plays a role in targeting this protein to the nucleolus. In the presence of PPP1R8 relocalizes from the nucleus to nuclear speckles.

图片



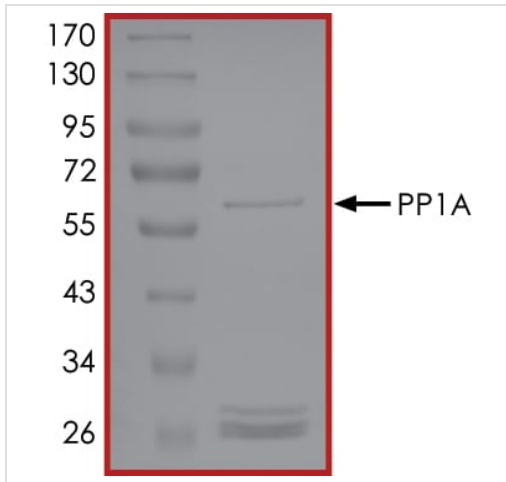
The specific activity of PPP1A/PPP1CA (ab128559) was determined to be 250 nmol/min/mg as per activity assay protocol

Functional Studies - Recombinant human
PPP1A/PPP1CA protein (ab128559)



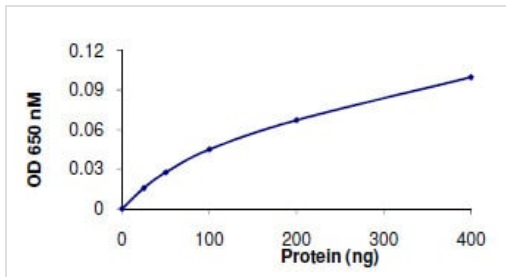
SDS PAGE analysis of ab128559

SDS-PAGE - Recombinant human PPP1A/PPP1CA
protein (ab128559)



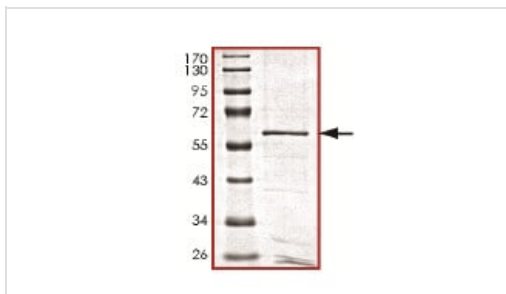
SDS PAGE analysis of ab128559

SDS-PAGE - Recombinant human PPP1A/PPP1CA protein (ab128559)



The specific activity of ab128559 was determined to be 228 nmol/min/mg.

Phosphatase Activity - Recombinant human PPP1A/PPP1CA protein (ab128559)



SDS-PAGE showing ab128559 at approximately 62 kDa.

SDS-PAGE - Recombinant human PPP1A/PPP1CA protein (ab128559)

Please note: All products are "FOR RESEARCH USE ONLY. NOT FOR USE IN DIAGNOSTIC PROCEDURES"

Our Abpromise to you: Quality guaranteed and expert technical support

- Replacement or refund for products not performing as stated on the datasheet
- Valid for 12 months from date of delivery
- Response to your inquiry within 24 hours

- We provide support in Chinese, English, French, German, Japanese and Spanish
- Extensive multi-media technical resources to help you
- We investigate all quality concerns to ensure our products perform to the highest standards

If the product does not perform as described on this datasheet, we will offer a refund or replacement. For full details of the Abpromise, please visit <https://www.abcam.cn/abpromise> or contact our technical team.

Terms and conditions

- Guarantee only valid for products bought direct from Abcam or one of our authorized distributors