

### Recombinant human PKR protein ab85838

#### 4 图像

#### 描述

产品名称	重组人PKR蛋白
生物活性	The Specific activity of ab85838 was determined to be 53-59 nmol/min/mg dependent on lot.
纯度	> 80 % Densitometry. Affinity purified.
表达系统	Baculovirus infected Sf9 cells
蛋白长度	Protein fragment
无动物成分	No
性质	Recombinant
种属	Human
氨基酸	252 to 551
标签	GST tag N-Terminus

#### 技术指标

Our **Abpromise guarantee** covers the use of **ab85838** in the following tested applications.

The application notes include recommended starting dilutions; optimal dilutions/concentrations should be determined by the end user.

应用	Western blot Functional Studies SDS-PAGE
形式	Liquid
补充说明	<b>ab64311</b> (Myelin Basic Protein protein) can be utilized as a substrate for assessing kinase activity

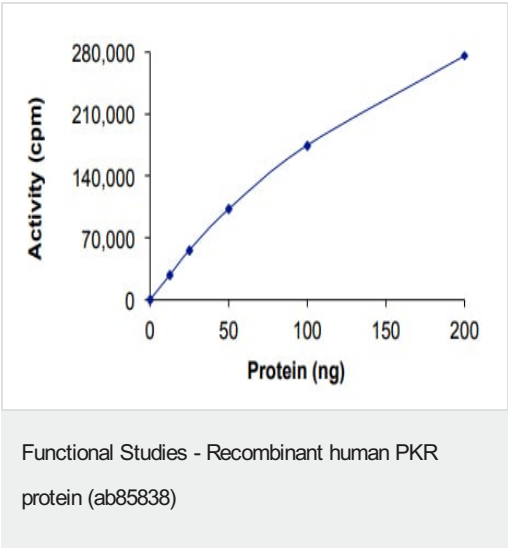
#### 制备和贮存

稳定性和存储	Shipped on dry ice. Upon delivery aliquot and store at -80°C. Avoid freeze / thaw cycles. pH: 7.50 Constituents: 0.0038% EGTA, 0.00174% PMSF, 0.00385% DTT, 0.79% Tris HCl, 0.00292% EDTA, 25% Glycerol (glycerin, glycerine), 0.87% Sodium chloride This product is an active protein and may elicit a biological response in vivo, handle with caution.
--------	--

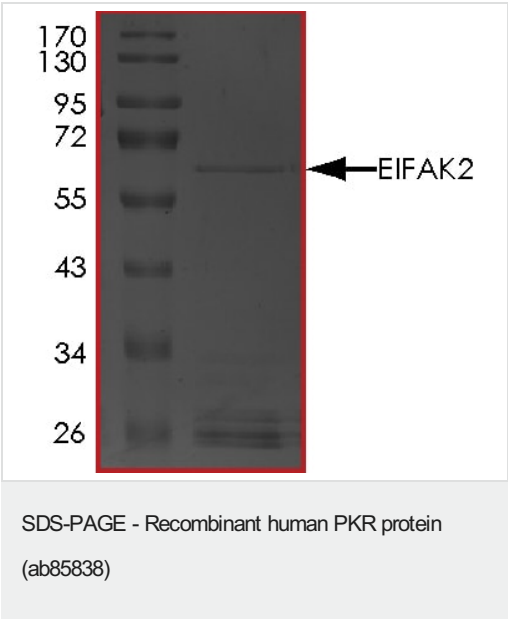
常规信息

功能	Following activation by double-stranded RNA in the presence of ATP, the kinase becomes autophosphorylated and can catalyze the phosphorylation of the translation initiation factor EIF2S1, which leads to an inhibition of the initiation of protein synthesis. Double-stranded RNA is generated during the course of a viral infection.
序列相似性	Belongs to the protein kinase superfamily. Ser/Thr protein kinase family. GCN2 subfamily. Contains 2 DRBM (double-stranded RNA-binding) domains. Contains 1 protein kinase domain.
翻译后修饰	Autophosphorylated on several Ser and Thr residues. Autophosphorylation of Thr-451 is dependent on Thr-446 and is stimulated by dsRNA binding and dimerization. Autophosphorylation apparently leads to the activation of the kinase.

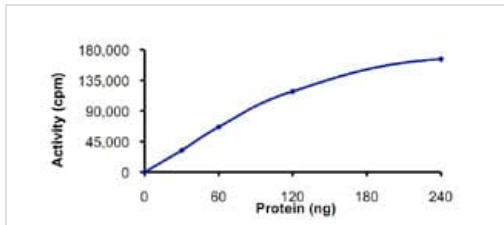
图片



The specific activity of PKR (ab85838) was determined to be 68 nmol/min/mg as per activity assay protocol

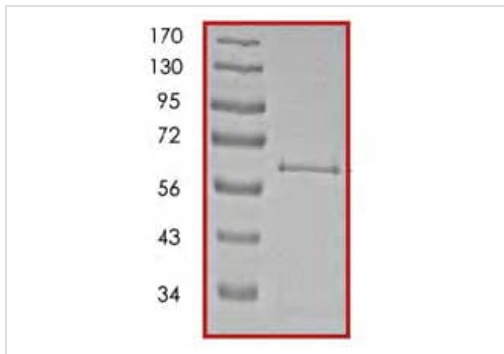


SDS PAGE analysis of ab85838



Sample Kinase Activity Plot.

Functional Studies - Recombinant human PKR protein (ab85838)



SDS-PAGE showing ab85838 at approximately 64kDa.

SDS-PAGE - Recombinant human PKR protein (ab85838)

**Please note:** All products are "FOR RESEARCH USE ONLY. NOT FOR USE IN DIAGNOSTIC PROCEDURES"

### Our Abpromise to you: Quality guaranteed and expert technical support

- Replacement or refund for products not performing as stated on the datasheet
- Valid for 12 months from date of delivery
- Response to your inquiry within 24 hours
- We provide support in Chinese, English, French, German, Japanese and Spanish
- Extensive multi-media technical resources to help you
- We investigate all quality concerns to ensure our products perform to the highest standards

If the product does not perform as described on this datasheet, we will offer a refund or replacement. For full details of the Abpromise, please visit <https://www.abcam.cn/abpromise> or contact our technical team.

### Terms and conditions

- Guarantee only valid for products bought direct from Abcam or one of our authorized distributors