

Recombinant human PKC alpha protein (Active) ab55672

4 References 3 图像

描述		
产品名称	重组人PKC alpha蛋白(Active)	
生物活性	Specific Activity: 3,200 nmol/min/mg.	
纯度	> 95 % Densitometry. Affinity purified.	
表达系统	Baculovirus infected Sf9 cells	
Accession	<u>P17252</u>	
蛋白长度	Full length protein	
无动物成分	No	
性质	Recombinant	
种属	Human	
序列	MADVFPGNDS TASQDVANRF ARKGALRQKN VHEVKDHKFI ARFFKQPTFC SHCTDFIWGF GKQGFQCQVC CFVVHKRCHE FVTFSCPGAD KGPDTDDPRS KHKFKIHTYG SPTFCDHCGS LLYGLIHQGM KCDTCDMNVH KQCVINVPSL CGMDHTEKRG RIYLKAEVAD EKLHVTVRDA KNLIPMDPNG LSDPYVKLKL IPDPKNESKQ KTKTIRSTLN PQWNESFTFK LKPSDKDRRL SVEIWDWDRT TRNDFMGSL S FGVSELMKMP ASGWYKLLNQ EEGEYYNVPI PEGDEEGNME LRQKFEKAKL GPAGNKVISP SEDRKQPSNN LDRVKLTDNF FLMVLGKGSF GKVMLADRRG TEELYAIKIL KKD VVIQDDD VECTMVEKRV LALLDKPPFL TQLHSCFQTV DRLYFVMEYV NGGDLMYHIQ QVGKFKEPQA VFYAAEISIG LFFLHKRGII YRDLKLDNVM LDSEGHKIA DFGMCKEHMM DGVTTTRTFCG TPDYIAPEII AYQPYGKSVD WWAYGVLLYE MLAGQPPFDG EDEDELFSI MEHNVSYPKS LSKEAVSVCK GLMTKHPAKR LGC GPEGERD VREHAFFRI DWEKLENREI QPPFKPKVCG KGAENFDKFF TRGQPVLTPP DQLVIANIDQ SDFEGFSYVN PQFVHPILQS AV	

预测分子量	103 kDa
氨基酸	1 to 672
标签	GST tag N-Terminus
额外的序列信息	(NM_002737)

## 技术指标

Our **Abpromise guarantee** covers the use of **ab55672** in the following tested applications.

The application notes include recommended starting dilutions; optimal dilutions/concentrations should be determined by the end user.

应用	Functional Studies Western blot SDS-PAGE
形式	Liquid
补充说明	<b>ab204856</b> (CREB peptide) can be utilized as a substrate for assessing kinase activity. For optimal storage, aliquot target into smaller quantities after centrifugation and store at recommended temperature. Avoid repeated handling.

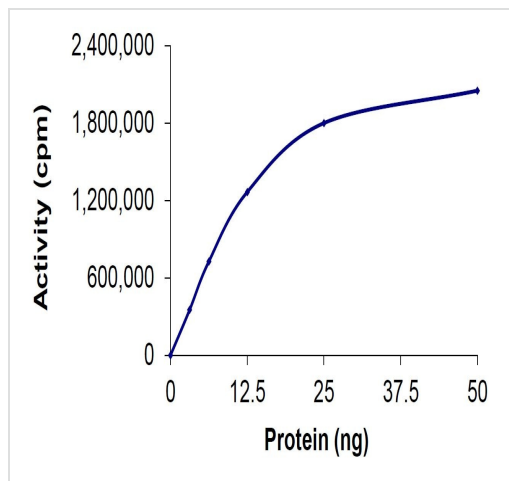
## 制备和贮存

稳定性和存储	Shipped on dry ice. Upon delivery aliquot and store at -80°C. Avoid freeze / thaw cycles. pH: 7.50 Constituents: 0.00174% PMSF, 0.00385% DTT, 0.79% Tris HCl, 0.00292% EDTA, 25% Glycerol, 0.87% Sodium chloride, 0.31% Glutathione This product is an active protein and may elicit a biological response in vivo, handle with caution.
--------	---

## 常规信息

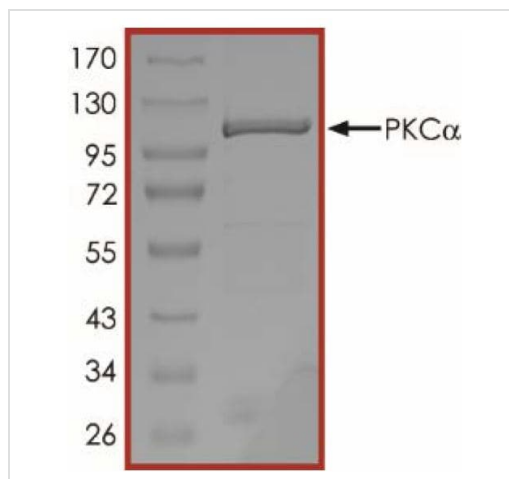
功能	This is a calcium-activated, phospholipid-dependent, serine- and threonine-specific enzyme. May play a role in cell motility by phosphorylating CSPG4. PKC is activated by diacylglycerol which in turn phosphorylates a range of cellular proteins. PKC also serves as the receptor for phorbol esters, a class of tumor promoters.
序列相似性	Belongs to the protein kinase superfamily. AGC Ser/Thr protein kinase family. PKC subfamily. Contains 1 AGC-kinase C-terminal domain. Contains 1 C2 domain. Contains 2 phorbol-ester/DAG-type zinc fingers. Contains 1 protein kinase domain.
细胞定位	Cytoplasm. Cell membrane. Nucleus.

## 图片



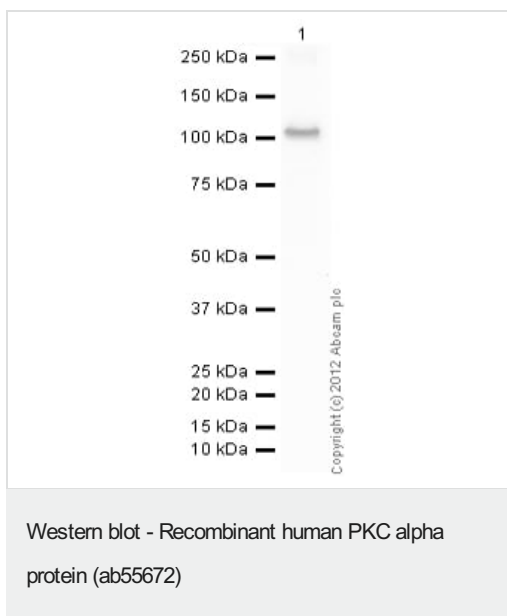
Specific activity: 3,200 nmol/min/mg

Functional Studies - Recombinant human PKC  
alpha protein (ab55672)



Purity >95% by densitometry.

SDS-PAGE - Recombinant human PKC alpha  
protein (ab55672)



**Please note:** All products are "FOR RESEARCH USE ONLY. NOT FOR USE IN DIAGNOSTIC PROCEDURES"

### Our Abpromise to you: Quality guaranteed and expert technical support

---

- Replacement or refund for products not performing as stated on the datasheet
- Valid for 12 months from date of delivery
- Response to your inquiry within 24 hours
- We provide support in Chinese, English, French, German, Japanese and Spanish
- Extensive multi-media technical resources to help you
- We investigate all quality concerns to ensure our products perform to the highest standards

If the product does not perform as described on this datasheet, we will offer a refund or replacement. For full details of the Abpromise, please visit <https://www.abcam.cn/abpromise> or contact our technical team.

### Terms and conditions

---

- Guarantee only valid for products bought direct from Abcam or one of our authorized distributors