

Recombinant human PD-L1 protein (Active) ab280943

5 图像

描述	
产品名称	重组人PD-L1蛋白(Active)
生物活性	Fully biologically active measured by its ability to inhibit anti-CD3 and anti-CD8 antibody induced T-cell expansion. ED ₅₀ for this effect is ≤500 ng/mL with a specific activity of 0.2 x 10 ⁴ units/mg.
纯度	>= 95 % SDS-PAGE. =95% by HPLC
内毒素水平	<=0.005 Eu/μg
表达系统	HEK 293 cells
Accession	<u>Q9NZQ7</u>
蛋白长度	Protein fragment
无动物成分	Yes
无载体	是
性质	Recombinant
种属	Human
序列	FTVTVPKDLY VVEYGSNMTI ECKFPVEKQL DLAALIVYWE MEDKNIIQFV HGEEDLKVQH SSYRQRARLL KDQLSLGNAA LQITDVKLQD AGVYRCMISY GGADYKRITV KVNAPYNKIN QRILVVDPVT SEHELTCQAE GYPKAEVIWT SSDHQVLSGK TTTTNSKREE KLFNVTSTLR INTTTNEIFY CTFRRLDPEE NHTAELVIPE LPLAHPPNER
预测分子量	25 kDa
实际分子量	25 kDa
分子量信息	Predicted MW is 25250.68 Da (+/- 10 Da by ESI-TOF). Observed MW is 25097.90 Da. M-100 due to loss of C-terminal arginine.
氨基酸	19 to 238
额外的序列信息	N-terminal glycine.

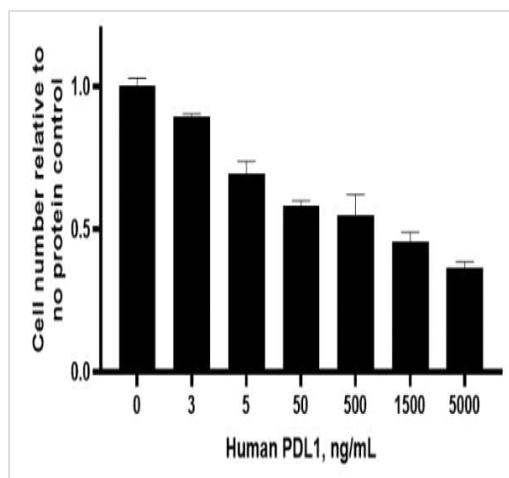
技术指标

Our [Abpromise guarantee](#) covers the use of **ab280943** in the following tested applications.

The application notes include recommended starting dilutions; optimal dilutions/concentrations should be determined by the end user.

应用	Mass Spectrometry
	Sandwich ELISA
	SDS-PAGE
	HPLC
	Functional Studies
形式	Lyophilized
制备和贮存	
稳定性和存储	Shipped at Room Temperature. Store at Room Temperature.
	pH: 7.40
	Constituents: 0.727% Dibasic monohydrogen potassium phosphate, 0.248% Monobasic dihydrogen potassium phosphate, 10.26% Trehalose
复溶	Buffer lyophilized from.
	This product is an active protein and may elicit a biological response in vivo, handle with caution.
	Reconstitute with phosphate buffered saline. Store lyophilized form at room temperature. Reconstitute, aliquot and store at -80°C for 12 months or +4°C for 1 week. Avoid repeated freeze-thaw. Lyophilized contents may appear as either a translucent film or a white powder. This variance does not affect the quality of the product. Lyophilized contents may appear as either a translucent film or a white powder. This variance does not affect the quality of the product.
常规信息	
功能	Involved in the costimulatory signal, essential for T-cell proliferation and production of IL10 and IFNG, in an IL2-dependent and a PDCD1-independent manner. Interaction with PDCD1 inhibits T-cell proliferation and cytokine production.
组织特异性	Highly expressed in the heart, skeletal muscle, placenta and lung. Weakly expressed in the thymus, spleen, kidney and liver. Expressed on activated T- and B-cells, dendritic cells, keratinocytes and monocytes.
序列相似性	Belongs to the immunoglobulin superfamily. BTN/MOG family. Contains 1 Ig-like C2-type (immunoglobulin-like) domain. Contains 1 Ig-like V-type (immunoglobulin-like) domain.
细胞定位	Cell membrane and Endomembrane system.

图片



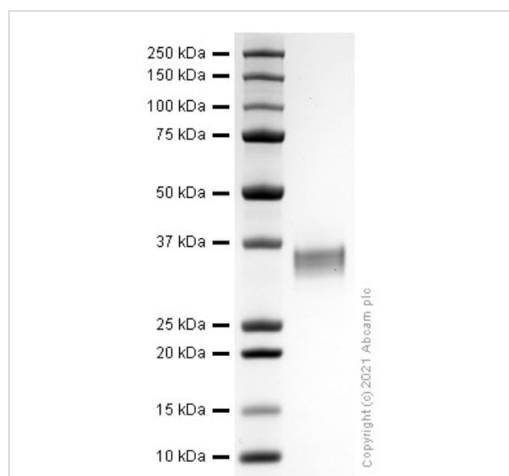
Functional Studies - Recombinant human PD-L1 protein (ab280943)

Functional analysis of an280943.

Fully biologically active measured by its ability to inhibit anti-CD3 and anti-CD8 antibody induced T-cell expansion. ED₅₀ for this effect is ≤500 ng/mL with a specific activity of 0.2 x 10⁴ units/mg.

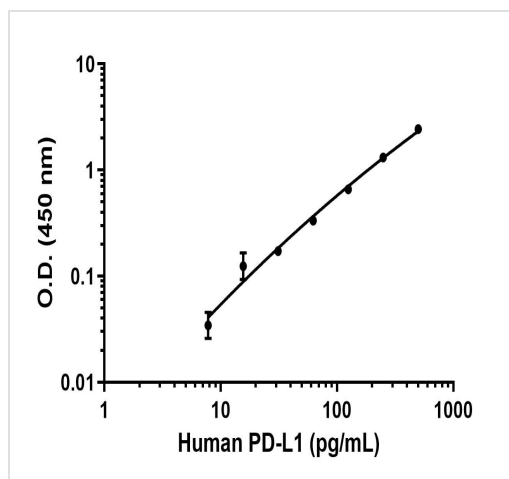
Cell based assay testing is performed on the first lot of protein only and is provided as a reference for protein activity; subsequent lots of protein must pass all biophysical quality control parameters that meet the same parameters as the first lot.

Lot: GR3381126-2



SDS-PAGE - Recombinant Human PD-L1 protein (ab280943)

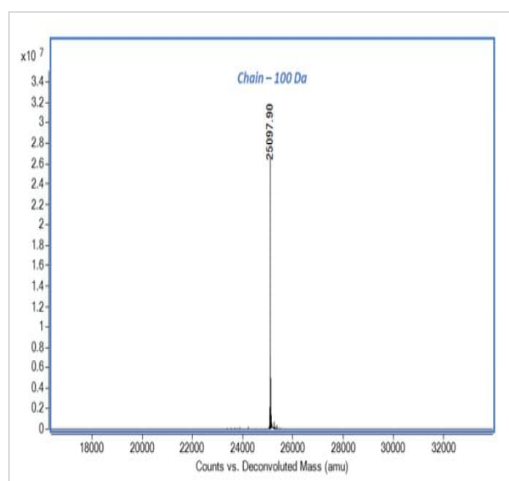
SDS-PAGE analysis of ab280943.



Sandwich ELISA - Recombinant human PD-L1 protein (Active) (ab280943)

Sandwich ELISA - Recombinant human PD-L1 protein standard curve.

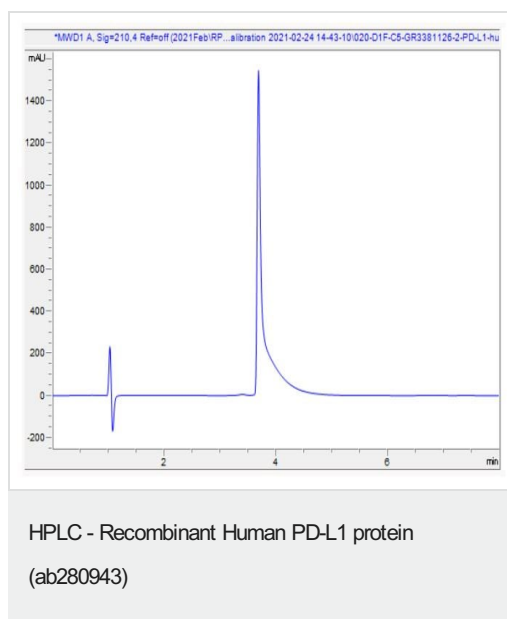
Background subtracted standard curve using Human/Monkey PD-L1 [28-8] Antibody Pair - BSA and Azide free ([ab253485](#)) and Recombinant human PD-L1 protein (Active) (ab280943) in sandwich ELISA. The ELISA was performed using the components of the corresponding SimpleStep® kit, which uses the same antibody pair with a different formulation and format.



Mass Spectrometry - Recombinant Human PD-L1 protein (ab280943)

Mass determination by ESI-TOF.

Predicted MW is 25250.68 Da (+/- 10 Da by ESI-TOF). Observed MW is 25097.90 Da. M-100 due to loss of C-terminal arginine.



HPLC analysis of ab280943.

Please note: All products are "FOR RESEARCH USE ONLY. NOT FOR USE IN DIAGNOSTIC PROCEDURES"

Our Abpromise to you: Quality guaranteed and expert technical support

- Replacement or refund for products not performing as stated on the datasheet
- Valid for 12 months from date of delivery
- Response to your inquiry within 24 hours
- We provide support in Chinese, English, French, German, Japanese and Spanish
- Extensive multi-media technical resources to help you
- We investigate all quality concerns to ensure our products perform to the highest standards

If the product does not perform as described on this datasheet, we will offer a refund or replacement. For full details of the Abpromise, please visit <https://www.abcam.cn/abpromise> or contact our technical team.

Terms and conditions

- Guarantee only valid for products bought direct from Abcam or one of our authorized distributors