

Recombinant human PD-L1 protein (Active) ab167713

2 References 8 图像

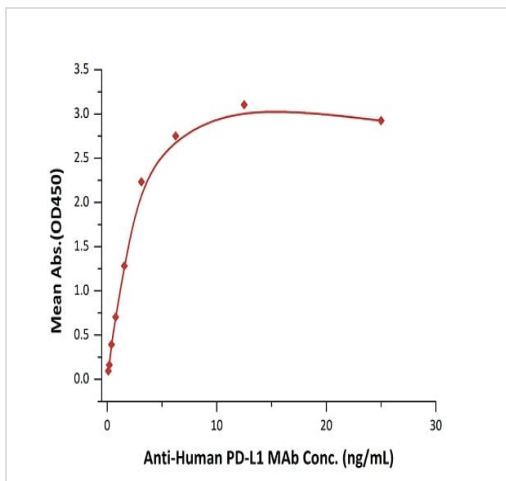
| 描述 | |
|-----------|--|
| 产品名称 | 重组人PD-L1蛋白(Active) |
| 生物活性 | Immobilized ab167713 on Anti-His Tag (C-term) Antibody, precoated (0.1 µg/well) plate, binds Human PD-1, Mouse IgG2a Fc Tag (HPLC-verified), at 5 µg/mL (100 µL/well) with a linear range of 10-78 ng/mL. |
| 纯度 | > 98 % SDS-PAGE. >90% as determined by SEC-HPLC. Purified by Immobilized metal affinity chromatography. |
| 内毒素水平 | < 1.000 Eu/µg |
| 表达系统 | HEK 293 cells |
| Accession | <u>Q9NZQ7</u> |
| 蛋白长度 | Protein fragment |
| 无动物成分 | No |
| 性质 | Recombinant |
| 种属 | Human |
| 序列 | FTVTVPKDLVVVEYGSNMTIECKFPVEKQLDLAALIVWEME DKNIIQFV HGEEDLKVQHSSYRQRARLLKDQLSLGNAALQITDVKLQDAG VYRCMISY GGADYKRITVKVNAPYNKINQRILVVDPVTSEHELTCAEGY PKAEVIWT SSDHQVLSGKTTTTNSKREEKLFNVTSTLRINTTTNEIFYCT FRRLDPEE NHTAELVIPELPLAHPNER |
| 预测分子量 | 26 kDa including tags |
| 分子量信息 | The protein migrates as 30-35 kDa under reducing conditions due to glycosylation. |
| 氨基酸 | 19 to 238 |
| 标签 | His tag C-Terminus |
| 额外的序列信息 | (NP_054862.1) |

技术指标

Our **Abpromise guarantee** covers the use of **ab167713** in the following tested applications.

The application notes include recommended starting dilutions; optimal dilutions/concentrations should be determined by the end user.

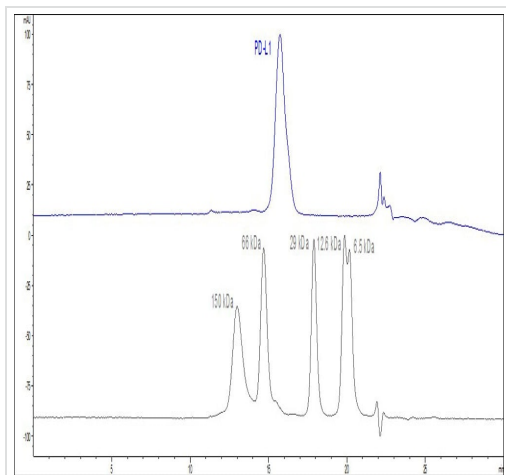
| | |
|--------|---|
| 应用 | HPLC |
| | SDS-PAGE |
| | Functional Studies |
| 形式 | Lyophilized |
| 补充说明 | For a recombinant rabbit monoclonal antibody to PD-L1 in IHC usage and KO validated - <u>see ab205921 (clone 28-8)</u> |
| | For a recombinant rabbit monoclonal antibody to PD-L1 in WB and ICC/IF usage - <u>see ab174838 (clone EPR1161(2))</u> |
| 制备和贮存 | |
| 稳定性和存储 | Shipped at 4°C. Store at +4°C short term (1-2 weeks). Upon delivery aliquot. Store at -20°C or -80°C. Avoid freeze / thaw cycle. |
| | pH: 7.40 |
| | Constituents: PBS, 5% Trehalose |
| 复溶 | 0.22 µm filtered |
| | This product is an active protein and may elicit a biological response in vivo, handle with caution. |
| 复溶 | Reconstitute with sterile deionized water to a concentration of 400 µg/ml. |
| 常规信息 | |
| 功能 | Involved in the costimulatory signal, essential for T-cell proliferation and production of IL10 and IFNG, in an IL2-dependent and a PDCD1-independent manner. Interaction with PDCD1 inhibits T-cell proliferation and cytokine production. |
| 组织特异性 | Highly expressed in the heart, skeletal muscle, placenta and lung. Weakly expressed in the thymus, spleen, kidney and liver. Expressed on activated T- and B-cells, dendritic cells, keratinocytes and monocytes. |
| 序列相似性 | Belongs to the immunoglobulin superfamily. BTN/MOG family. |
| | Contains 1 Ig-like C2-type (immunoglobulin-like) domain. |
| 细胞定位 | Contains 1 Ig-like V-type (immunoglobulin-like) domain. |
| | Cell membrane and Endomembrane system. |
| 图片 | |



Immobilized ab167713 at 1 µg/mL (100 µL/well) binds Anti-Human PD-L1 MAb (Human IgG1).

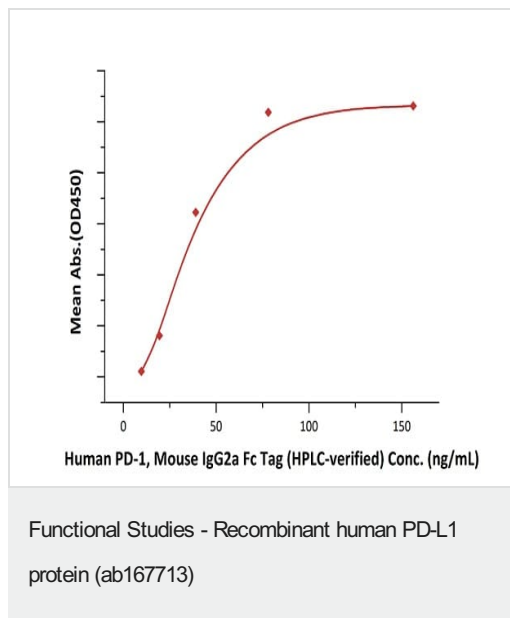
Linear range of 0.1-3 ng/mL (QC tested).

Functional Studies - Recombinant human PD-L1 protein (ab167713)



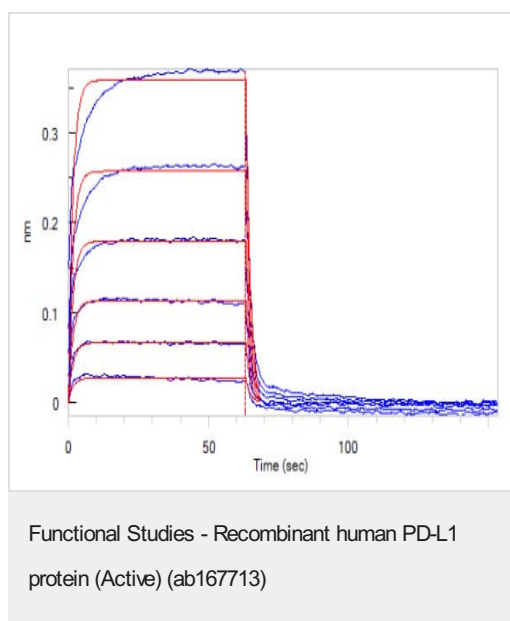
The purity of Human PD-L1 (His Tag) (HPLC verified) was greater than 90% as determined by SEC-HPLC.

Functional Studies - Recombinant human PD-L1 protein (Active) (ab167713)

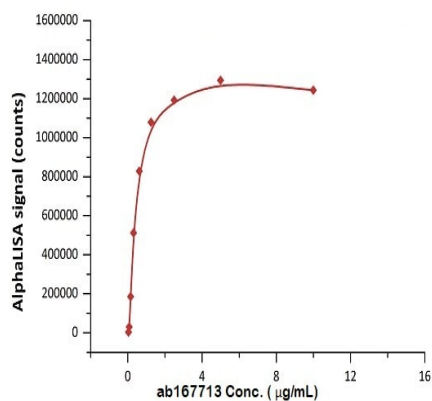


Immobilized ab167713 on Anti-His Tag (C-term) Antibody, precoated (0.1 µg/well) plate, binds Human PD-1, Mouse IgG2a Fc Tag (HPLC-verified), at 5 µg/mL (100 µL/well).

Linear range of 10-78 ng/mL (Routinely tested).



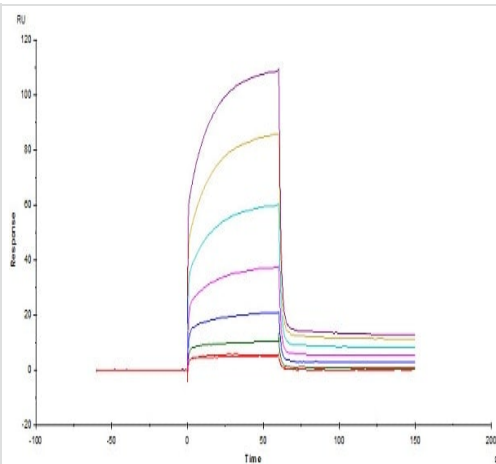
Loaded Recombinant human PD1 protein (Fc Chimera Active) **ab221398** on ProteinA Biosensor, can bind Human PD-L1, His Tag ab167713 with an affinity constant of 5.3 µM as determined in BLI assay.



Biotinylated Human PD-1, Fc Tag (**ab246137**) binds Recombinant human PD-L1 protein ab167713 at 1 µg/mL (5µL/well).

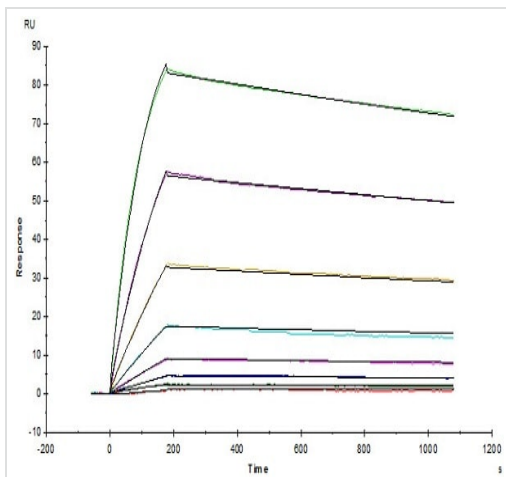
Linear range of 0.02-0.625 µg/mL as determined in a alphaLISA homogeneous assay (Routinely tested).

Functional Studies - Recombinant human PD-L1 protein (ab167713)



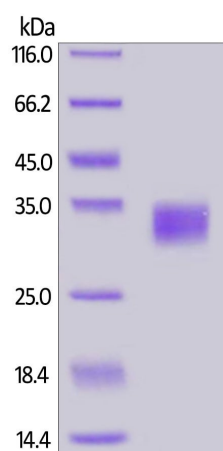
Human PD-1, Fc Tag (**ab221398**), captured on CM5 chip via anti-human IgG Fc antibody, binds ab167713 with an affinity constant of 3.6 µM, as determined in an SPR assay (Biacore T200).

Functional Studies - Recombinant human PD-L1 protein (ab167713)



Anti-Human PD-L1 Mab (Human IgG1), captured on CM5 chip via anti-human IgG Fc antibodies surface, binds ab167713 with an affinity constant of 0.286 nM, as determined in a SPR assay (Biacore T200) (Routinely tested).

Functional Studies - Recombinant human PD-L1 protein (ab167713)



Reduced ab167713 on SDS-PAGE, stained overnight with Coomassie Blue.

The purity of the protein is greater than 98%.

The protein migrates as 30-35 kDa under reducing conditions, due to glycosylation.

SDS-PAGE - Recombinant human PD-L1 protein (Active) (ab167713)

Please note: All products are "FOR RESEARCH USE ONLY. NOT FOR USE IN DIAGNOSTIC PROCEDURES"

Our Abpromise to you: Quality guaranteed and expert technical support

- Replacement or refund for products not performing as stated on the datasheet
- Valid for 12 months from date of delivery
- Response to your inquiry within 24 hours

- We provide support in Chinese, English, French, German, Japanese and Spanish
- Extensive multi-media technical resources to help you
- We investigate all quality concerns to ensure our products perform to the highest standards

If the product does not perform as described on this datasheet, we will offer a refund or replacement. For full details of the Abpromise, please visit <https://www.abcam.cn/abpromise> or contact our technical team.

Terms and conditions

- Guarantee only valid for products bought direct from Abcam or one of our authorized distributors