

Recombinant Human p38 delta/MAPK13 protein ab113869

1 图像

| 描述        |   |
|-----------|---|
| 产品名称      | 重组人p38 delta/MAPK13蛋白   |
| 纯度        | > 90 % SDS-PAGE.<br>ab113869 was purified using conventional chromatography.  |
| 表达系统      | Escherichia coli  |
| Accession | <u>O15264</u>   |
| 蛋白长度      | Full length protein   |
| 无动物成分     | No  |
| 性质        | Recombinant   |
| 种属        | Human   |
| 序列        | MGSSHHHHHSSGLVPRGSHMSLIRKKGFYKQDVNKTAWELPKTYVSPTHVGS<br>GAYGSVCSAIDKRSGEKVAIKKLSRPFQSEIFAKRAYRELLLLKHMQHENVIGLLDVFT<br>PASSLRNFYDFYLVMPFMQTDLQKIMGMEFSEEKIQYLVYQMLKGLKYIHSAGVVHRDL<br>KPGNLAVNEDCELKILDFGLARHADAEMTGYVTRWYRAPEVILSWMHYNQTVDIWSVGCIMA<br>EMLTGKTLFKGKDYLQLTQILKVTGVPGT<br>EFVQKLNDKAAKSYIQSLPQT<br>PRKDFTQLFPRASPQAADLLEKMLELDVDKRLTAAQAL<br>THPFFEPFRDPEEETEAQQPFDDSLHEKLT<br>VDEWKQHIYKEIVNFSPIARKDSRRRSGMKL |
| 预测分子量     | 44 kDa including tags   |
| 氨基酸       | 1 to 365  |
| 标签        | His tag N-Terminus  |

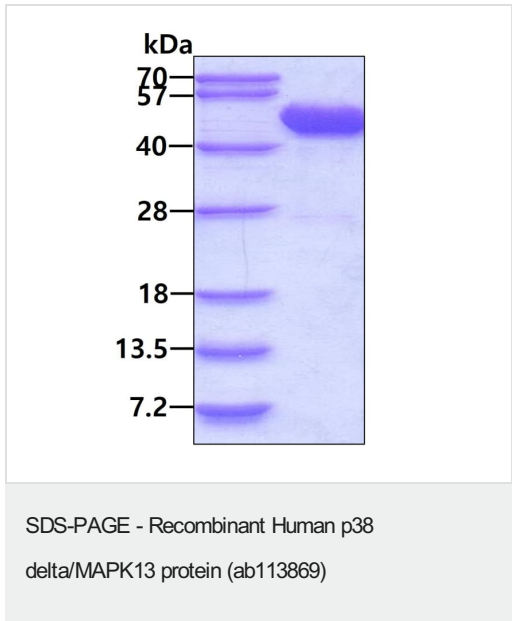
技术指标

Our **Abpromise guarantee** covers the use of **ab113869** in the following tested applications.

The application notes include recommended starting dilutions; optimal dilutions/concentrations should be determined by the end user.

|        |   |
|--------|---|
| 应用     | Mass Spectrometry   |
|        | SDS-PAGE  |
| 质谱法    | MALDI-TOF   |
| 形式     | Liquid  |
| 制备和贮存  |   |
| 稳定性和存储 | <p>Shipped at 4°C. Store at +4°C short term (1-2 weeks). Upon delivery aliquot. Store at -20°C or -80°C. Avoid freeze / thaw cycle.</p> <p>pH: 8.00</p> <p>Constituents: 0.02% DTT, 0.32% Tris HCl, 20% Glycerol (glycerin, glycerine), 0.58% Sodium chloride</p> |
| 常规信息   |   |
| 功能     | Responds to activation by environmental stress and pro-inflammatory cytokines by phosphorylating downstream targets. Plays a role in the regulation of protein translation by phosphorylating and inactivating EEF2K.   |
| 组织特异性  | Expressed in testes, pancreas, small intestine, lung and kidney. Abundant in macrophages, also present in neutrophils, CD4+ T-cells, and endothelial cells.   |
| 序列相似性  | <p>Belongs to the protein kinase superfamily. CMGC Ser/Thr protein kinase family. MAP kinase subfamily.</p> <p>Contains 1 protein kinase domain.</p>  |
| 结构域    | The TXY motif contains the threonine and tyrosine residues whose phosphorylation activates the MAP kinases.   |
| 翻译后修饰  | Dually phosphorylated on Thr-180 and Tyr-182, which activates the enzyme.   |

图片



SDS-PAGE analysis of ab113869.

**Please note:** All products are "FOR RESEARCH USE ONLY. NOT FOR USE IN DIAGNOSTIC PROCEDURES"

### **Our Abpromise to you: Quality guaranteed and expert technical support**

---

- Replacement or refund for products not performing as stated on the datasheet
- Valid for 12 months from date of delivery
- Response to your inquiry within 24 hours
  
- We provide support in Chinese, English, French, German, Japanese and Spanish
- Extensive multi-media technical resources to help you
- We investigate all quality concerns to ensure our products perform to the highest standards

If the product does not perform as described on this datasheet, we will offer a refund or replacement. For full details of the Abpromise, please visit <https://www.abcam.cn/abpromise> or contact our technical team.

### **Terms and conditions**

---

- Guarantee only valid for products bought direct from Abcam or one of our authorized distributors