

Recombinant Human Optineurin protein (His tag) ab235021

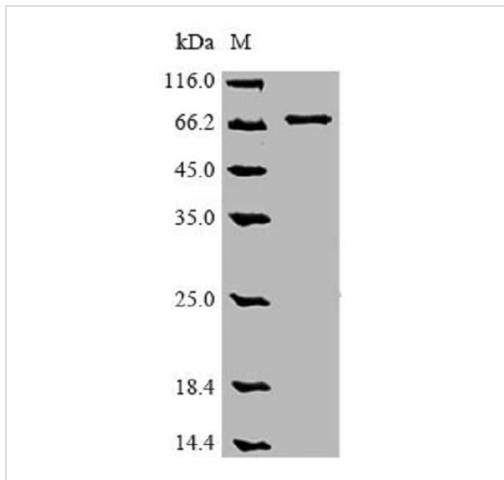
3 图像

描述	
产品名称	重组人Optineurin蛋白(His tag)
纯度	>= 85 % SDS-PAGE. Affinity purified.
表达系统	Baculovirus infected insect cells
Accession	<u>Q96CV9-1</u>
蛋白长度	Full length protein
无动物成分	No
性质	Recombinant
种属	Human
序列	MSHQPLSCLTEKEDSPSESTGNGPPHLAHPNLDFTPEELLQ QMKELLTE NHQLKEAMKLNNQAMKGRFEELSAWTEKQKEERQFFEIQSKE AKERLMAL SHENEKLKEELGKLKGKSERSSDPTDDSRLPRAEAEQEKDQ LRTQVVRL QAEKADLLGIVSELQLKLNSSGSSSEDSFVEIRMAEGEAEGSV KEIKHSPG PTRTVSTGTALSKYRSRSADGAKNYFEHEELTVSQLLLCLRE GNQKVERL EVALKEAKERVSDFEKKTSNRSEIETQTEGSTEKENDEEKGP ETVGSEVE ALNLQVTSLFKELQEAHTKLSKAELMKKRLQEKCCALERKNS AIPSELNE KQELVYTNKKLELQVESMLSEIKMEQAKTEDEKSKLTVLQMT HNKLLQEH NNALKTIEELTRKESEKVDRAVLKELSEKLELAEKALASKQL QMDEMKT IAKQEEDELETMTILRAQMEVYCSDFHAERAAREKIHEEKEQL ALQLAVLL KENDAFEDGGRQSLMEMQSRHGARTSDSDQQAYLVQRGAEDR DWRQQRNI PIHSCPKEVLPDIDTLQIHVMDCII
预测分子量	68 kDa including tags
氨基酸	1 to 577

标签	His tag C-Terminus
额外的序列信息	C-terminal 9xHis-tagged.
<b>技术指标</b>	
Our <b>Abpromise guarantee</b> covers the use of <b>ab235021</b> in the following tested applications.	
The application notes include recommended starting dilutions; optimal dilutions/concentrations should be determined by the end user.	
应用	SDS-PAGE Mass Spectrometry
形式	Liquid
<b>制备和贮存</b>	
稳定性和存储	Shipped at 4°C. Store at -20°C or -80°C. Avoid freeze / thaw cycle. pH: 7.20 Constituents: Tris buffer, 50% Glycerol (glycerin, glycerine)
<b>常规信息</b>	
功能	Plays an important role in the maintenance of the Golgi complex, in membrane trafficking, in exocytosis, through its interaction with myosin VI and Rab8. Links myosin VI to the Golgi complex and plays an important role in Golgi ribbon formation. Negatively regulates the induction of IFNB in response to RNA virus infection. Plays a neuroprotective role in the eye and optic nerve. Probably part of the TNF-alpha signaling pathway that can shift the equilibrium toward induction of cell death. May act by regulating membrane trafficking and cellular morphogenesis via a complex that contains Rab8 and huntingtin (HD). May constitute a cellular target for adenovirus E3 14.7, an inhibitor of TNF-alpha functions, thereby affecting cell death.
组织特异性	Present in aqueous humor of the eye (at protein level). Highly expressed in trabecular meshwork. Expressed nonpigmented ciliary epithelium, retina, brain, adrenal cortex, fetus, lymphocyte, fibroblast, skeletal muscle, heart, liver, brain and placenta.
疾病相关	Defects in OPTN are the cause of primary open angle glaucoma type 1E (GLC1E) [MIM:137760]. Primary open angle glaucoma (POAG) is characterized by a specific pattern of optic nerve and visual field defects. The angle of the anterior chamber of the eye is open, and usually the intraocular pressure is increased. The disease is asymptomatic until the late stages, by which time significant and irreversible optic nerve damage has already taken place. Defects in OPTN are a cause of susceptibility to normal pressure glaucoma (NPG) [MIM:606657]. Defects in OPTN are the cause of amyotrophic lateral sclerosis type 12 (ALS12) [MIM:613435]. It is a neurodegenerative disorder affecting upper motor neurons in the brain and lower motor neurons in the brain stem and spinal cord, resulting in fatal paralysis. Sensory abnormalities are absent. Death usually occurs within 2 to 5 years. The etiology of amyotrophic lateral sclerosis is likely to be multifactorial, involving both genetic and environmental factors. The disease is inherited in 5-10% of the cases.
结构域	Ubiquitin-binding motif (UBAN) is essential for its inhibitory function, subcellular localization and interaction with TBK1.
翻译后修饰	Phosphorylated. Phosphorylation is induced by phorbol esters and decreases its half-time.
细胞定位	Cytoplasm > perinuclear region. Golgi apparatus. Golgi apparatus > trans-Golgi network. Found

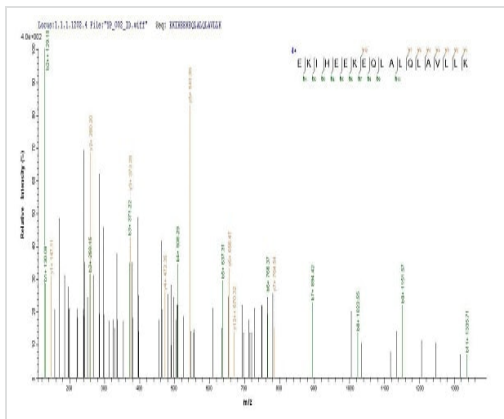
in the perinuclear region and associates with the Golgi apparatus. Colocalizes with MYO6 and RAB8 at the Golgi complex and in vesicular structures close to the plasma membrane.

## 图片



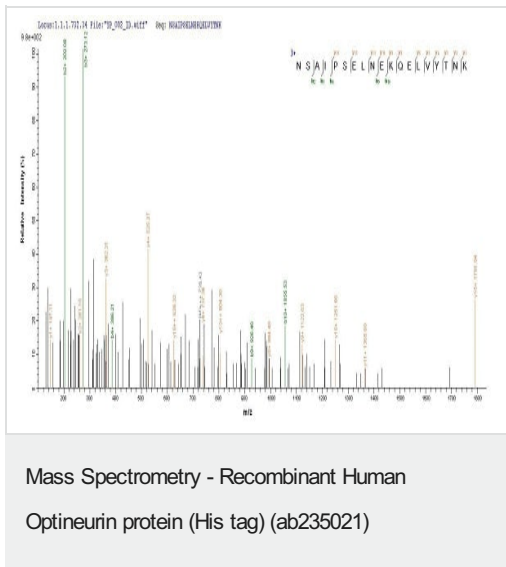
SDS-PAGE - Recombinant Human Optineurin protein (His tag) (ab235021)

ab235021 analyzed by (Tris-Glycine gel) discontinuous SDS-PAGE (reduced) with 5% enrichment gel and 15% separation gel.



Mass Spectrometry - Recombinant Human Optineurin protein (His tag) (ab235021)

Based on the SEQUEST from database of Baculovirus host and target protein, the LC-MS/MS Analysis result of ab235021 could indicate that this peptide derived from Baculovirus-expressed Homo sapiens(Human) OPTN.



Based on the SEQUEST from database of Baculovirus host and target protein, the LC-MS/MS Analysis result of ab235021 could indicate that this peptide derived from Baculovirus-expressed Homo sapiens(Human) OPTN.

**Please note:** All products are "FOR RESEARCH USE ONLY. NOT FOR USE IN DIAGNOSTIC PROCEDURES"

### Our Abpromise to you: Quality guaranteed and expert technical support

- Replacement or refund for products not performing as stated on the datasheet
- Valid for 12 months from date of delivery
- Response to your inquiry within 24 hours
- We provide support in Chinese, English, French, German, Japanese and Spanish
- Extensive multi-media technical resources to help you
- We investigate all quality concerns to ensure our products perform to the highest standards

If the product does not perform as described on this datasheet, we will offer a refund or replacement. For full details of the Abpromise, please visit <https://www.abcam.cn/abpromise> or contact our technical team.

### Terms and conditions

- Guarantee only valid for products bought direct from Abcam or one of our authorized distributors