

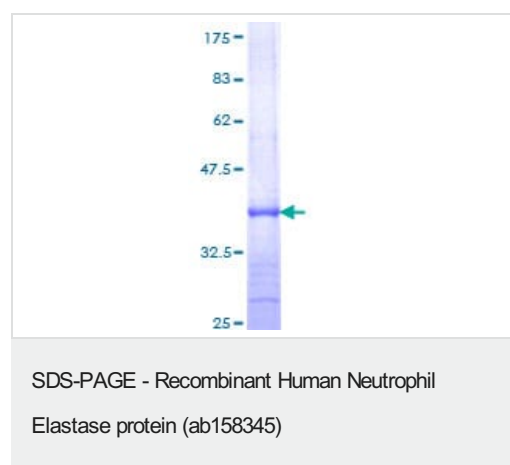
Recombinant Human Neutrophil Elastase protein ab158345

1 图像

描述	
产品名称	重组人Neutrophil Elastase蛋白
表达系统	Wheat germ
Accession	P08246
蛋白长度	Protein fragment
无动物成分	No
性质	Recombinant
种属	Human
序列	VLQELNVTVVTSLCRRSNVCTLVGRGRQAGVCFGDSGSPLVCN GLIHGIAS FVRGGCASGLYPDAFAPVAQFVNWIDSIIQRSEDNPCPHPRD PDPASRTH
氨基酸	168 to 267
标签	GST tag N-Terminus
额外的序列信息	NP_001963
技术指标	
Our Abpromise guarantee covers the use of ab158345 in the following tested applications.	
The application notes include recommended starting dilutions; optimal dilutions/concentrations should be determined by the end user.	
应用	Western blot ELISA
形式	Liquid
制备和贮存	
稳定性和存储	Shipped on dry ice. Upon delivery aliquot and store at -80°C. Avoid freeze / thaw cycles. pH: 8.00 Constituents: 0.31% Glutathione, 0.79% Tris HCl
常规信息	

功能	Modifies the functions of natural killer cells, monocytes and granulocytes. Inhibits C5a-dependent neutrophil enzyme release and chemotaxis.
组织特异性	Bone marrow cells.
疾病相关	<p>Defects in ELANE are a cause of cyclic haematopoiesis (CH) [MIM:162800]; also known as cyclic neutropenia. CH is an autosomal dominant disease in which blood-cell production from the bone marrow oscillates with 21-day periodicity. Circulating neutrophils vary between almost normal numbers and zero. During intervals of neutropenia, affected individuals are at risk for opportunistic infection. Monocytes, platelets, lymphocytes and reticulocytes also cycle with the same frequency.</p> <p>Defects in ELANE are the cause of neutropenia severe congenital autosomal dominant type 1 (SCN1) [MIM:202700]. SCN1 is a disorder of hematopoiesis characterized by a maturation arrest of granulopoiesis at the level of promyelocytes with peripheral blood absolute neutrophil counts below $0.5 \times 10^9/l$ and early onset of severe bacterial infections.</p>
序列相似性	<p>Belongs to the peptidase S1 family. Elastase subfamily.</p> <p>Contains 1 peptidase S1 domain.</p>

图片



12.5% SDS-PAGE analysis of ab158345, stained with Coomassie Blue.

Please note: All products are "FOR RESEARCH USE ONLY. NOT FOR USE IN DIAGNOSTIC PROCEDURES"

Our Abpromise to you: Quality guaranteed and expert technical support

- Replacement or refund for products not performing as stated on the datasheet
- Valid for 12 months from date of delivery
- Response to your inquiry within 24 hours
- We provide support in Chinese, English, French, German, Japanese and Spanish
- Extensive multi-media technical resources to help you
- We investigate all quality concerns to ensure our products perform to the highest standards

If the product does not perform as described on this datasheet, we will offer a refund or replacement. For full details of the Abpromise, please visit <https://www.abcam.cn/abpromise> or contact our technical team.

Terms and conditions

- Guarantee only valid for products bought direct from Abcam or one of our authorized distributors