

Recombinant human MYO3A protein ab191000

5 图像

描述

产品名称	重组人MYO3A蛋白
生物活性	The Specific activity of ab191000 was determined to be 4 nmol/min/mg.
纯度	> 85 % Densitometry. Affinity purified.
表达系统	Baculovirus infected Sf9 cells
Accession	<u>Q8NEV4</u>
蛋白长度	Protein fragment
无动物成分	No
性质	Recombinant
种属	Human
序列	<pre> MFPLIGKTII FDNFPDPSDT WEITETIGKG TYGKVKVLN KKNQKAAVK ILDPIHDIDE EIEAEYNILK ALSDHPNVVR FYGIYFKKDK VNGDKLWLV ELCSGGSVTD LVKGFLKRGE RMSEPLIAYI LHEALMGLQH LHNNKTIHRD VKGNNILLTT EGGVKLVDFG VSAQLTSTRH RRNTSVGTPF WMAPEVIACE QQLDTTYDAR CDTWSLGITA IELGDGDPPL ADLHPMRALF KIPRNPPPKL RQPELWSAEF NDFISKCLTK DYEKRPTVSE LLQHKFITQI EGKDVMLQKQ LTEFIGIHQC MGGTEKARRE RIHTKKGNFN RPLISNLKDV DDLATLEILD ENTVSEQLEK CYSRDQIYVY VGDILIALNP FQSLGLYSTK HSKLYIGSKR TASPPIFAM ADLGYSMIT YNSDQCIVIS GESG </pre>
预测分子量	76 kDa including tags
氨基酸	1 to 434
标签	proprietary tag N-Terminus
额外的序列信息	NM_017433.

技术指标

Our **Abpromise guarantee** covers the use of **ab191000** in the following tested applications.

The application notes include recommended starting dilutions; optimal dilutions/concentrations should be determined by the end user.

应用	SDS-PAGE Functional Studies
形式	Liquid
补充说明	ab64311 (Myelin Basic Protein protein) can be utilized as a substrate for assessing kinase activity

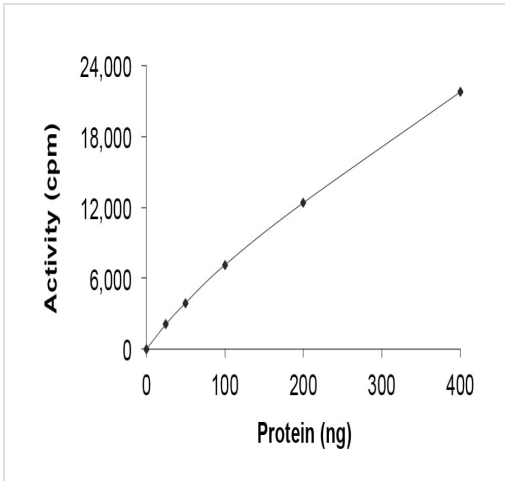
制备和贮存

稳定性和存储	Shipped on Dry Ice. Upon delivery aliquot. Store at -80°C. Avoid freeze / thaw cycle. pH: 7.50 Constituents: 0.79% Tris HCl, 0.31% Glutathione, 0.002% PMSF, 25% Glycerol (glycerin, glycerine), 0.87% Sodium chloride, 0.003% EDTA, 0.004% DTT This product is an active protein and may elicit a biological response in vivo, handle with caution.
---------------	---

常规信息

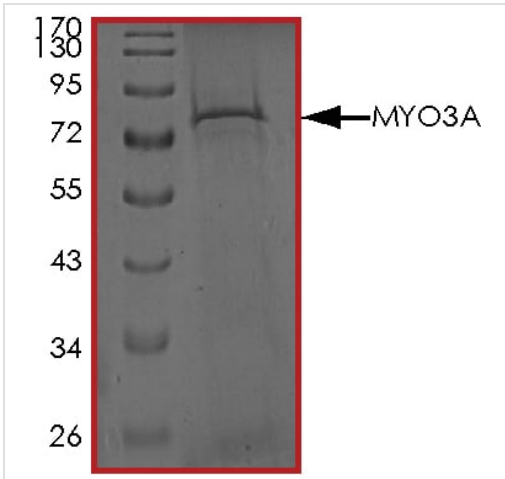
功能	Probable actin-based motor with a protein kinase activity. Probably plays a role in vision and hearing.
组织特异性	Strongest expression in retina, retinal pigment epithelial cells, cochlea and pancreas.
疾病相关	Deafness, autosomal recessive, 30
序列相似性	In the N-terminal section; belongs to the protein kinase superfamily. STE Ser/Thr protein kinase family. Contains 3 IQ domains. Contains 1 myosin head-like domain. Contains 1 protein kinase domain.
细胞定位	Cytoplasm > cytoskeleton.

图片



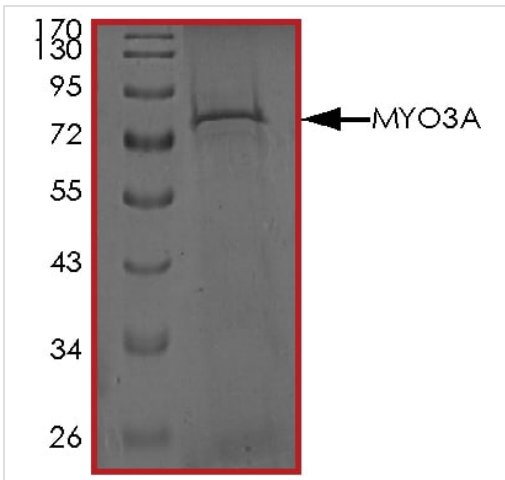
The specific activity of MYO3A (ab191000) was determined to be 4.5 nmol/min/mg as per activity assay protocol

Functional Studies - Recombinant human MYO3A protein (ab191000)



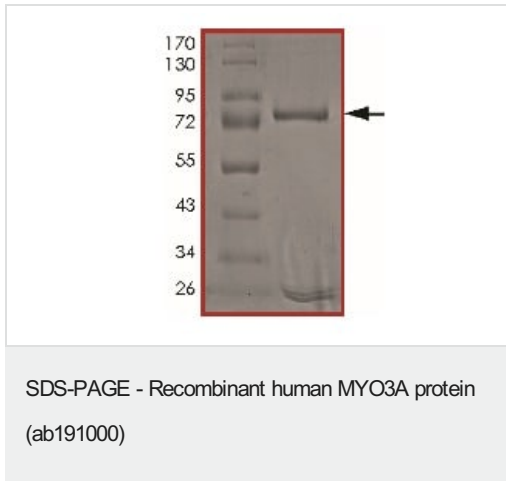
SDS PAGE analysis of ab191000

SDS-PAGE - Recombinant human MYO3A protein (ab191000)

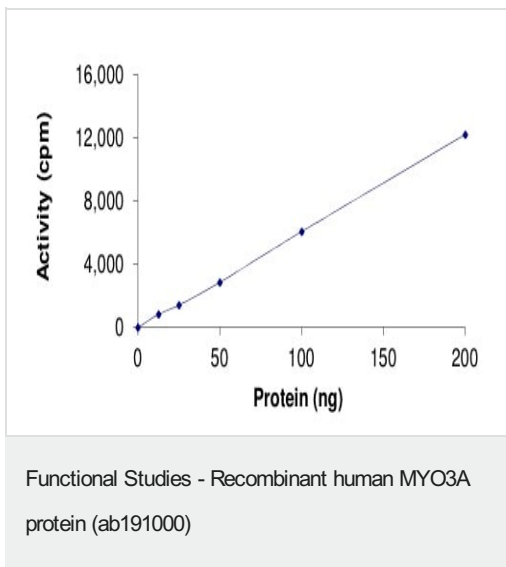


SDS PAGE analysis of ab191000

SDS-PAGE - Recombinant human MYO3A protein (ab191000)



SDS-PAGE analysis of ab191000.



Kinase Assay: The specific activity of ab191000 was determined to be 4 nmol /min/mg.

Please note: All products are "FOR RESEARCH USE ONLY. NOT FOR USE IN DIAGNOSTIC PROCEDURES"

Our Abpromise to you: Quality guaranteed and expert technical support

- Replacement or refund for products not performing as stated on the datasheet
- Valid for 12 months from date of delivery
- Response to your inquiry within 24 hours
- We provide support in Chinese, English, French, German, Japanese and Spanish
- Extensive multi-media technical resources to help you
- We investigate all quality concerns to ensure our products perform to the highest standards

If the product does not perform as described on this datasheet, we will offer a refund or replacement. For full details of the Abpromise, please visit <https://www.abcam.cn/abpromise> or contact our technical team.

Terms and conditions

- Guarantee only valid for products bought direct from Abcam or one of our authorized distributors