

Recombinant Human Muscarinic Acetylcholine Receptor 2/CM2 protein ab152277

1 图像

描述	
产品名称	重组人Muscarinic Acetylcholine Receptor 2/CM2蛋白
表达系统	Wheat germ
蛋白长度	Protein fragment
无动物成分	No
性质	Recombinant
种属	Human
序列	SDDGLEHNKIQNGKAPRDPVTENCVQGEEKESSNDSTSVSAV ASNMRDDE ITQDENTVSTSLGHSKDENSEKQTCIRIGTKTPKSDSCTPTNT TVEVVGSS
氨基酸	251 to 350
标签	GST tag N-Terminus

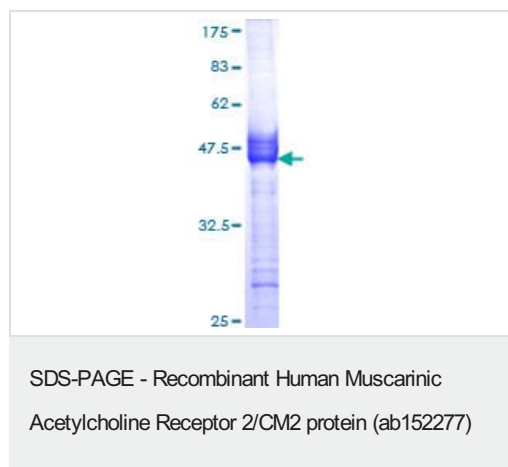
技术指标	
Our Abpromise guarantee covers the use of ab152277 in the following tested applications.	
The application notes include recommended starting dilutions; optimal dilutions/concentrations should be determined by the end user.	
应用	ELISA Western blot
形式	Liquid
补充说明	

制备和贮存	
稳定性和存储	Shipped on dry ice. Upon delivery aliquot and store at -80°C. Avoid freeze / thaw cycles. pH: 8.00 Constituents: 0.31% Glutathione, 0.79% Tris HCl

常规信息

功能	The muscarinic acetylcholine receptor mediates various cellular responses, including inhibition of adenylate cyclase, breakdown of phosphoinositides and modulation of potassium channels through the action of G proteins. Primary transducing effect is adenylate cyclase inhibition.
疾病相关	Genetic variations in CHRM2 can influence susceptibility to major depressive disorder (MDD) [MIM:608516]. MDD is one of the most common psychiatric disorders. MDD is a complex trait characterized by one or more major depressive episodes without a history of manic, mixed, or hypomanic episodes. A major depressive episode is characterized by at least 2 weeks during which there is a new onset or clear worsening of either depressed mood or loss of interest or pleasure in nearly all activities. Four additional symptoms must also be present including changes in appetite, weight, sleep, and psychomotor activity; decreased energy; feelings of worthlessness or guilt; difficulty thinking, concentrating, or making decisions; or recurrent thoughts of death or suicidal ideation, plans, or attempts. The episode must be accompanied by distress or impairment in social, occupational, or other important areas of functioning.
序列相似性	Belongs to the G-protein coupled receptor 1 family. Muscarinic acetylcholine receptor subfamily. CHRM2 sub-subfamily.
细胞定位	Cell membrane. Cell junction > synapse > postsynaptic cell membrane.

图片



ab152277 on a 12.5% SDS-PAGE stained with Coomassie Blue.

Please note: All products are "FOR RESEARCH USE ONLY. NOT FOR USE IN DIAGNOSTIC PROCEDURES"

Our Abpromise to you: Quality guaranteed and expert technical support

- Replacement or refund for products not performing as stated on the datasheet
- Valid for 12 months from date of delivery
- Response to your inquiry within 24 hours
- We provide support in Chinese, English, French, German, Japanese and Spanish
- Extensive multi-media technical resources to help you
- We investigate all quality concerns to ensure our products perform to the highest standards

If the product does not perform as described on this datasheet, we will offer a refund or replacement. For full details of the Abpromise, please visit <https://www.abcam.cn/abpromise> or contact our technical team.

Terms and conditions

- Guarantee only valid for products bought direct from Abcam or one of our authorized distributors