

Recombinant Human MMACHC/CbIC protein ab126674

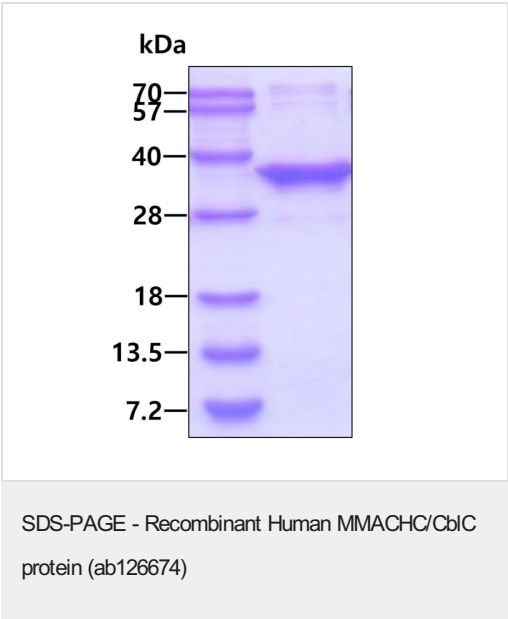
1 图像

描述	
产品名称	重组人MMACHC/CbIC蛋白
纯度	> 90 % SDS-PAGE. Purified using conventional chromatography techniques
表达系统	Escherichia coli
Accession	<u>Q9Y4U1</u>
蛋白长度	Full length protein
无动物成分	No
性质	Recombinant
种属	Human
序列	MGSSHHHHHH SSGLVPRGSH MGSHEPKVA ELKQKIEDTL CPFGEVYYPF QVAWYNELLP PAFHLPLPGP TLAFLVLSTP AMFDRALKPF LQSCHLRMLT DPVDQCVAYH LGRVRESLPE LQIEIIADYE VHPNRRPKIL AQTAHVAGA AYYYQRQDVE ADPWGNQRIS GVCIHPRFGG WFAIRGVVLL PGIEVPDLPP RKPHDCVPTR ADRIALLEGF NFHWRDWTYR DAVTPQERY EEQKAYFSTP PAQRLALLGL AQPSEKPSSP SPDLPFTTPA PKKPGNPSRA RSWLSRVSP PASPGP
预测分子量	34 kDa including tags
氨基酸	1 to 282
标签	His tag N-Terminus

技术指标	
Our Abpromise guarantee covers the use of ab126674 in the following tested applications.	
The application notes include recommended starting dilutions; optimal dilutions/concentrations should be determined by the end user.	
应用	Mass Spectrometry SDS-PAGE
质谱法	MALDI-TOF
形式	Liquid

补充说明	This product was previously labelled as MMACHC
制备和贮存	
稳定性和存储	<p>Shipped at 4°C. Store at +4°C short term (1-2 weeks). Upon delivery aliquot. Store at -20°C or -80°C. Avoid freeze / thaw cycle.</p> <p>pH: 8.00</p> <p>Constituents: 0.02% DTT, 0.32% Tris HCl, 10% Glycerol (glycerin, glycerine), 0.88% Sodium chloride</p>
常规信息	
功能	May be involved in the binding and intracellular trafficking of cobalamin (vitamin B12).
组织特异性	Widely expressed. Expressed at higher level in fetal liver. Also expressed in spleen, lymph node, thymus and bone marrow. Weakly or not expressed in peripheral blood leukocytes.
通路	Cofactor biosynthesis; adenosylcobalamin biosynthesis.
疾病相关	Defects in MMACHC are the cause of methylmalonic aciduria and homocystinuria type cblC (MMACHC) [MIM:277400]. MMACHC is a disorder of cobalamin metabolism characterized by decreased levels of the coenzymes adenosylcobalamin (AdoCbl) and methylcobalamin (MeCbl). Affected individuals may have developmental, hematologic, neurologic, metabolic, ophthalmologic, and dermatologic clinical findings. Although considered a disease of infancy or childhood, some individuals develop symptoms in adulthood.
序列相似性	Belongs to the MMACHC family.

图片



3ug by SDS-PAGE under reducing conditions and visualized by coomassie blue stain.

Please note: All products are "FOR RESEARCH USE ONLY. NOT FOR USE IN DIAGNOSTIC PROCEDURES"

Our Abpromise to you: Quality guaranteed and expert technical support

- Replacement or refund for products not performing as stated on the datasheet
- Valid for 12 months from date of delivery
- Response to your inquiry within 24 hours
- We provide support in Chinese, English, French, German, Japanese and Spanish
- Extensive multi-media technical resources to help you
- We investigate all quality concerns to ensure our products perform to the highest standards

If the product does not perform as described on this datasheet, we will offer a refund or replacement. For full details of the Abpromise, please visit <https://www.abcam.cn/abpromise> or contact our technical team.

Terms and conditions

- Guarantee only valid for products bought direct from Abcam or one of our authorized distributors