

Recombinant Human MICB protein ab158894

1 图像

描述	
产品名称	重组人MICB蛋白
表达系统	Wheat germ
蛋白长度	Full length protein
无动物成分	No
性质	Recombinant
种属	Human
序列	MGLGRVLLFLAVAFPFAPPAAAAEPHSLRYNLMVLSQDGSVQ SGFLAEGH LDGQPFLRYDRQKRRAKPQGQWAEDVLGAETWDTETEDLTEN GQDLRRTL THIKDQKGVPQSSRAQTLAMNVTNFWKEDAMKTKTHYRAMQA DCLQKLQR YLKSGVAIRRTVPPMVNVTCEVSEGNITVTCRASSFYPRNI TLTWRQDG VSLSHNTQQWGDVLPDGNGTYQTWVATRIRQGEEQRFTCYME HSGNHGTH PVPSGKALVLQSQRDFFPYVSAAMPCFVIIILCVPCCKKKT SAAEGPEL VSLQVLDQHPVGTGDHRDAAQLGFQPLMSATGSTGSTEGA
氨基酸	1 to 340
标签	GST tag N-Terminus

技术指标	
Our Abpromise guarantee covers the use of ab158894 in the following tested applications.	
The application notes include recommended starting dilutions; optimal dilutions/concentrations should be determined by the end user.	
应用	ELISA Western blot
形式	Liquid
补充说明	

制备和贮存

稳定性和存储

Shipped on dry ice. Upon delivery aliquot and store at -80°C. Avoid freeze / thaw cycles.

pH: 8.00

Constituents: 0.31% Glutathione, 0.79% Tris HCl

常规信息

功能

Seems to have no role in antigen presentation. Acts as a stress-induced self-antigen that is recognized by gamma delta T cells. Ligand for the KLRK1/NKG2D receptor. Binding to KLRK1 leads to cell lysis.

组织特异性

Widely expressed with the exception of the central nervous system where it is absent. Expressed in many, but not all, epithelial tumors of lung, breast, kidney, ovary, prostate and colon. In hepatocellular carcinomas, expressed in tumor cells but not in surrounding non-cancerous tissue.

疾病相关

Genetic variations in MICA are a cause of susceptibility to rheumatoid arthritis (RA) [MIM:180300]. It is a systemic inflammatory disease with autoimmune features and a complex genetic component. It primarily affects the joints and is characterized by inflammatory changes in the synovial membranes and articular structures, widespread fibrinoid degeneration of the collagen fibers in mesenchymal tissues, and by atrophy and rarefaction of bony structures. Note=The MICB*004 allele is associated with rheumatoid arthritis. Note=Genetic variation in MICB is associated with cytomegalovirus and herpes simplex virus I seropositivity and this may be associated with schizophrenia risk.

序列相似性

Belongs to the MHC class I family. MIC subfamily.

Contains 1 Ig-like C1-type (immunoglobulin-like) domain.

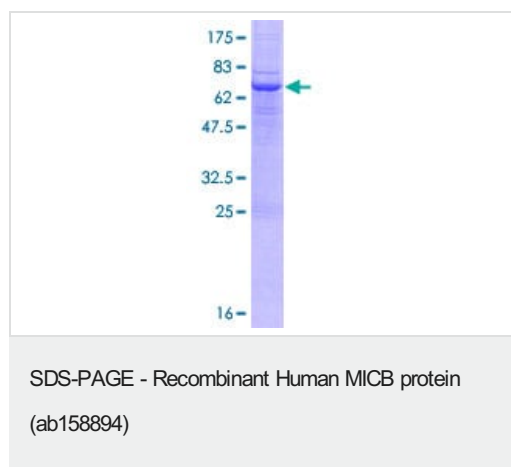
翻译后修饰

Proteolytically cleaved and released from the cell surface of tumor cells.

细胞定位

Cell membrane. Binding to human cytomegalovirus glycoprotein UL16 causes sequestration in the endoplasmic reticulum.

图片



ab158894 on a 12.5% SDS-PAGE stained with Coomassie Blue.

Please note: All products are "FOR RESEARCH USE ONLY. NOT FOR USE IN DIAGNOSTIC PROCEDURES"

Our Abpromise to you: Quality guaranteed and expert technical support

- Replacement or refund for products not performing as stated on the datasheet
- Valid for 12 months from date of delivery
- Response to your inquiry within 24 hours

- We provide support in Chinese, English, French, German, Japanese and Spanish
- Extensive multi-media technical resources to help you
- We investigate all quality concerns to ensure our products perform to the highest standards

If the product does not perform as described on this datasheet, we will offer a refund or replacement. For full details of the Abpromise, please visit <https://www.abcam.cn/abpromise> or contact our technical team.

Terms and conditions

- Guarantee only valid for products bought direct from Abcam or one of our authorized distributors