

## Product datasheet

# Recombinant human Met (c-Met) protein ab42612

## 2 图像

### 描述

---

产品名称	重组人Met (c-Met)蛋白
生物活性	40 U/μg. One unit is defined as the amount of enzyme that will transfer 1 pmol phosphate to Tyr substrate per minute at pH 7.4 and 30°C. Assay buffer: 50 mM HEPES, pH 7.4, 3 mM MgCl <sub>2</sub> , 3 mM MnCl <sub>2</sub> , 1 mM DTT, 3 μM Na-orthovanadate, 0.1 mM ATP, 30 μg/ml Poly (Glu:Tyr)4:1 substrate and 4 μg/ml recombinant c-Met.
纯度	> 70 % SDS-PAGE. Affinity purified.
表达系统	Baculovirus infected Sf9 cells
Accession	<b><u>P08581</u></b>
蛋白长度	Protein fragment
无动物成分	No
性质	Recombinant
种属	Human
预测分子量	74 kDa including tags
氨基酸	956 to 1390
标签	GST tag N-Terminus

### 技术指标

---

Our **Abpromise guarantee** covers the use of **ab42612** in the following tested applications.

The application notes include recommended starting dilutions; optimal dilutions/concentrations should be determined by the end user.

应用	Inhibition Assay
形式	Liquid
补充说明	This protein was expressed in a Baculovirus infected Sf9 cell expression system.

### 制备和贮存

---

稳定性和存储	Shipped on Dry Ice. Upon delivery aliquot. Store at -80°C. Avoid freeze / thaw cycle. pH: 8.00 Constituents: 0.0462% (R*,R*)-1,4-Dimercaptobutan-2,3-diol, 0.71% Tris HCl, 10% Glycerol (glycerin, glycerine), 0.724% Sodium chloride, 0.018% Potassium chloride
--------	--

This product is an active protein and may elicit a biological response in vivo, handle with caution.

## 常规信息

---

### 功能

Receptor for hepatocyte growth factor and scatter factor. Has a tyrosine-protein kinase activity. Functions in cell proliferation, scattering, morphogenesis and survival.

### 疾病相关

Note=Activation of MET after rearrangement with the TPR gene produces an oncogenic protein.  
Note=Defects in MET may be associated with gastric cancer.

Defects in MET are a cause of hepatocellular carcinoma (HCC) [MIM:114550].

Defects in MET are a cause of renal cell carcinoma papillary (RCCP) [MIM:605074]. It is a subtype of renal cell carcinoma tending to show a tubulo-papillary architecture formed by numerous, irregular, finger-like projections of connective tissue. Renal cell carcinoma is a heterogeneous group of sporadic or hereditary carcinoma derived from cells of the proximal renal tubular epithelium. It is subclassified into common renal cell carcinoma (clear cell, non-papillary carcinoma), papillary renal cell carcinoma, chromophobe renal cell carcinoma, collecting duct carcinoma with medullary carcinoma of the kidney, and unclassified renal cell carcinoma.

Note=A common allele in the promoter region of the MET shows genetic association with susceptibility to autism in some families. Functional assays indicate a decrease in MET promoter activity and altered binding of specific transcription factor complexes.

Note=MET activating mutations may be involved in the development of a highly malignant, metastatic syndrome known as cancer of unknown primary origin (CUP) or primary occult malignancy. Systemic neoplastic spread is generally a late event in cancer progression. However, in some instances, distant dissemination arises at a very early stage, so that metastases reach clinical relevance before primary lesions. Sometimes, the primary lesions cannot be identified in spite of the progresses in the diagnosis of malignancies.

### 序列相似性

Belongs to the protein kinase superfamily. Tyr protein kinase family.

Contains 3 IPT/TIG domains.

Contains 1 protein kinase domain.

Contains 1 Sema domain.

### 结构域

The kinase domain is involved in SPSB1 binding.

### 翻译后修饰

Dephosphorylated by PTPRJ at Tyr-1349 and Tyr-1365.

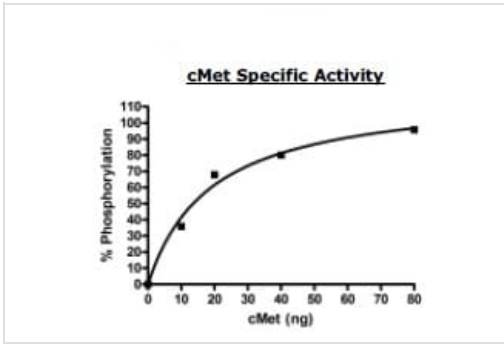
### 细胞定位

Membrane.

---

## 图片

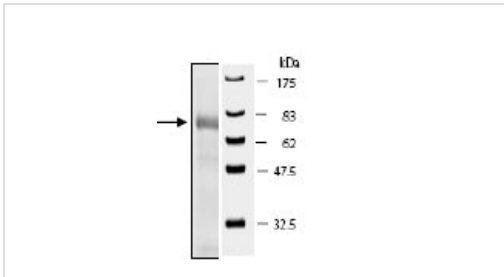
---



Functional Studies - Recombinant human Met (c-Met) protein (ab42612)

Specific Activity: 64pmol/min/ug. cMet was incubated with 2uM substrate (Tyr2 peptide) for 1h at 30°C in a buffer containing 50mM HEPES (ph7.5), 10mM MgCl<sub>2</sub>, 1mM EDTA, 0.01% BRIJ-35 and 200uM ATP.

Developer solution was added to reaction and reaction was stopped after 1h of incubation at RT.



SDS-PAGE - Recombinant human Met (c-Met) protein (ab42612)

10% SDS-PAGE Gel, Stained with Coomassie Blue, 4µg of ab42612 loaded onto Gel.

**Please note:** All products are "FOR RESEARCH USE ONLY. NOT FOR USE IN DIAGNOSTIC PROCEDURES"

### Our Abpromise to you: Quality guaranteed and expert technical support

- Replacement or refund for products not performing as stated on the datasheet
- Valid for 12 months from date of delivery
- Response to your inquiry within 24 hours
- We provide support in Chinese, English, French, German, Japanese and Spanish
- Extensive multi-media technical resources to help you
- We investigate all quality concerns to ensure our products perform to the highest standards

If the product does not perform as described on this datasheet, we will offer a refund or replacement. For full details of the Abpromise, please visit <https://www.abcam.cn/abpromise> or contact our technical team.

### Terms and conditions

- Guarantee only valid for products bought direct from Abcam or one of our authorized distributors