

Recombinant human MELK protein ab102551

5 图像

描述

产品名称	重组人MELK蛋白
生物活性	The Specific activity of ab102551 was determined to be 200 nmol/min/mg.
纯度	> 85 % Densitometry. Purity was determined to be >85% by densitometry. Affinity purified.
表达系统	Baculovirus infected Sf9 cells
Accession	<u>Q14680</u>
蛋白长度	Protein fragment
无动物成分	No
性质	Recombinant
种属	Human
预测分子量	61 kDa including tags
氨基酸	1 to 340

技术指标

Our **Abpromise guarantee** covers the use of **ab102551** in the following tested applications.

The application notes include recommended starting dilutions; optimal dilutions/concentrations should be determined by the end user.

应用	Functional Studies SDS-PAGE Western blot
形式	Liquid
补充说明	<u>ab204885</u> (ZIP Kinase peptide substrate) can be utilized as a substrate for assessing kinase activity

制备和贮存

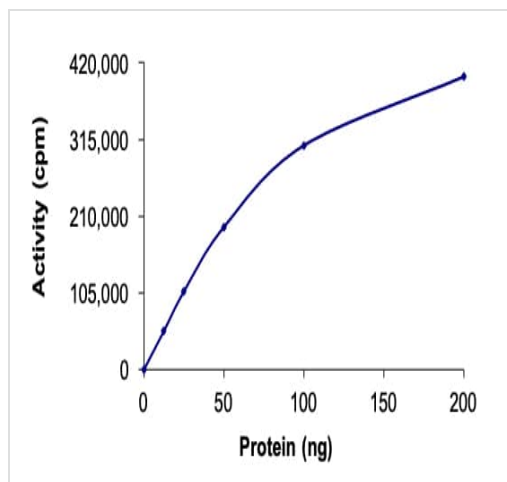
稳定性和存储	Shipped on dry ice. Upon delivery aliquot and store at -80°C. Avoid freeze / thaw cycles. pH: 7.50 Constituents: 0.307% Glutathione, 0.00174% PMSF, 0.00385% DTT, 0.79% Tris HCl, 0.00292% EDTA, 25% Glycerol (glycerin, glycerine), 0.87% Sodium chloride
--------	--

This product is an active protein and may elicit a biological response in vivo, handle with caution.

常规信息

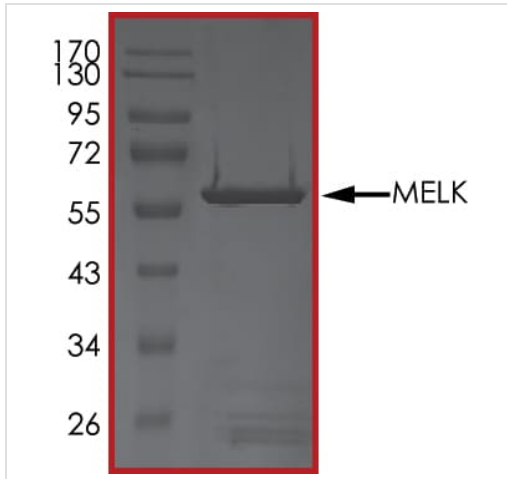
功能	Phosphorylates ZNF622 and may contribute to its redirection to the nucleus. May be involved in the inhibition of spliceosome assembly during mitosis.
组织特异性	Expressed in placenta, kidney, thymus, testis, ovary and intestine.
序列相似性	Belongs to the protein kinase superfamily. CAMK Ser/Thr protein kinase family. SNF1 subfamily. Contains 1 KA1 (kinase-associated) domain. Contains 1 protein kinase domain.
翻译后修饰	Autophosphorylated. Thr-478 phosphorylation during mitosis promotes interaction with PPP1R8.
细胞定位	Cytoplasm.

图片



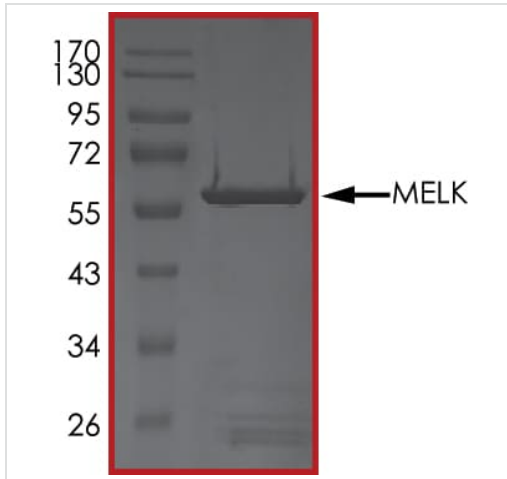
The specific activity of MELK (ab102551) was determined to be 230 nmol/min/mg as per activity assay protocol

Functional Studies - Recombinant human MELK protein (ab102551)



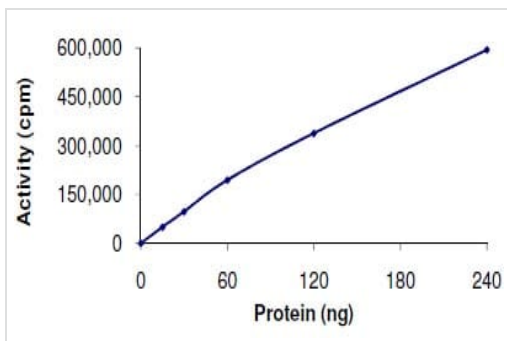
SDS-PAGE - Recombinant human MELK protein (ab102551)

SDS PAGE analysis of ab102551



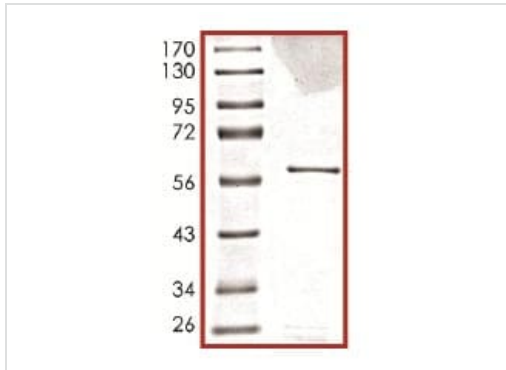
SDS-PAGE - Recombinant human MELK protein (ab102551)

SDS PAGE analysis of ab102551



Functional Studies - Recombinant human MELK protein (ab102551)

The Specific activity of ab102551 was determined to be 200 nmol/min/mg.



SDS-PAGE showing ab102551 at approximately 61kDa.

SDS-PAGE - Recombinant human MELK protein
(ab102551)

Please note: All products are "FOR RESEARCH USE ONLY. NOT FOR USE IN DIAGNOSTIC PROCEDURES"

Our Abpromise to you: Quality guaranteed and expert technical support

- Replacement or refund for products not performing as stated on the datasheet
- Valid for 12 months from date of delivery
- Response to your inquiry within 24 hours
- We provide support in Chinese, English, French, German, Japanese and Spanish
- Extensive multi-media technical resources to help you
- We investigate all quality concerns to ensure our products perform to the highest standards

If the product does not perform as described on this datasheet, we will offer a refund or replacement. For full details of the Abpromise, please visit <https://www.abcam.cn/abpromise> or contact our technical team.

Terms and conditions

- Guarantee only valid for products bought direct from Abcam or one of our authorized distributors